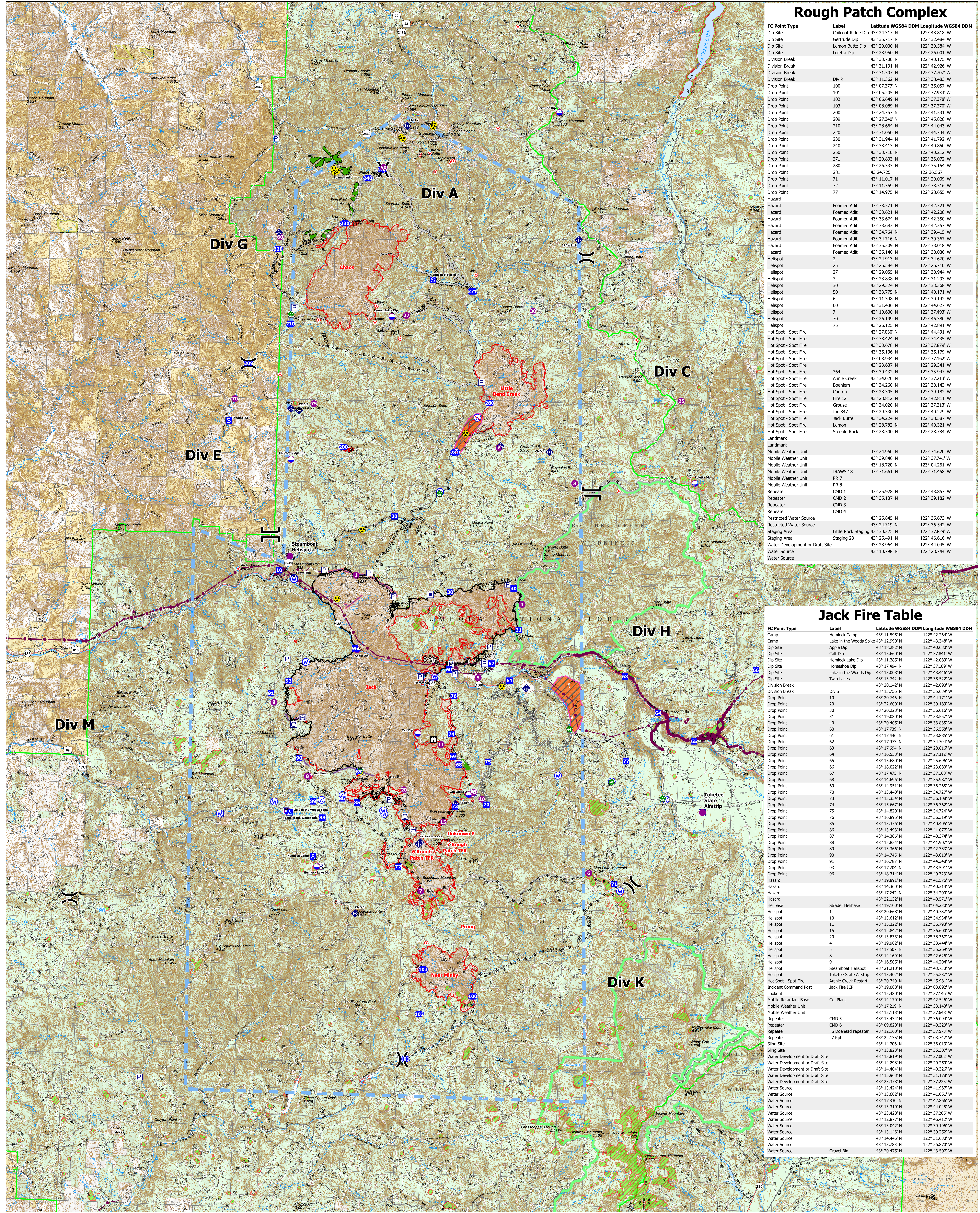


**Rough Patch Complex**

FC Point Type	Label	Latitude WGS84 DDM	Longitude WGS84 DDM
Dip Site	Chicoat Ridge Dip	43° 24.317' N	122° 43.818' W
Dip Site	Gertrude Dip	43° 25.717' N	122° 32.484' W
Dip Site	Lemon Butte Dip	43° 29.000' N	122° 39.584' W
Dip Site	Loleta Dip	43° 23.950' N	122° 26.001' W
Division Break		43° 33.706' N	122° 40.175' W
Division Break		43° 31.191' N	122° 42.926' W
Division Break		43° 31.507' N	122° 37.707' W
Division Break	Div R	43° 11.362' N	122° 38.483' W
Drop Point	100	43° 07.277' N	122° 35.057' W
Drop Point	101	43° 05.205' N	122° 37.933' W
Drop Point	102	43° 05.649' N	122° 37.278' W
Drop Point	103	43° 08.089' N	122° 37.270' W
Drop Point	200	43° 24.767' N	122° 41.531' W
Drop Point	209	43° 27.340' N	122° 45.828' W
Drop Point	210	43° 28.664' N	122° 44.043' W
Drop Point	220	43° 31.050' N	122° 44.704' W
Drop Point	230	43° 31.944' N	122° 41.792' W
Drop Point	240	43° 33.413' N	122° 40.850' W
Drop Point	250	43° 33.710' N	122° 40.212' W
Drop Point	271	43° 29.893' N	122° 36.072' W
Drop Point	280	43° 26.333' N	122° 35.154' W
Drop Point	281	43 24.725	122 36.567
Drop Point	71	43° 11.017' N	122° 29.009' W
Drop Point	72	43° 11.359' N	122° 38.516' W
Drop Point	77	43° 14.975' N	122° 28.655' W
Hazard	Foamed Adit	43° 33.571' N	122° 42.321' W
Hazard	Foamed Adit	43° 33.621' N	122° 42.208' W
Hazard	Foamed Adit	43° 33.674' N	122° 42.350' W
Hazard	Foamed Adit	43° 33.683' N	122° 42.357' W
Hazard	Foamed Adit	43° 34.761' N	122° 39.415' W
Hazard	Foamed Adit	43° 34.716' N	122° 39.367' W
Hazard	Foamed Adit	43° 35.209' N	122° 38.018' W
Hazard	Foamed Adit	43° 35.140' N	122° 38.036' W
Helispot	2	43° 24.913' N	122° 34.670' W
Helispot	25	43° 26.584' N	122° 26.710' W
Helispot	27	43° 29.055' N	122° 38.944' W
Helispot	3	43° 23.838' N	122° 31.293' W
Helispot	30	43° 29.324' N	122° 33.368' W
Helispot	50	43° 33.775' N	122° 40.171' W
Helispot	6	43° 11.348' N	122° 39.415' W
Helispot	60	43° 31.436' N	122° 44.627' W
Helispot	7	43° 10.600' N	122° 37.493' W
Helispot	70	43° 26.199' N	122° 46.380' W
Helispot	75	43° 26.125' N	122° 42.891' W
Hot Spot - Spot Fire		43° 27.030' N	122° 44.431' W
Hot Spot - Spot Fire		43° 38.424' N	122° 34.435' W
Hot Spot - Spot Fire		43° 33.678' N	122° 37.879' W
Hot Spot - Spot Fire		43° 35.136' N	122° 35.179' W
Hot Spot - Spot Fire		43° 08.934' N	122° 37.162' W
Hot Spot - Spot Fire		43° 23.837' N	122° 29.241' W
Hot Spot - Spot Fire	364	43° 30.432' N	122° 35.947' W
Hot Spot - Spot Fire	Annie Creek	43° 34.020' N	122° 37.213' W
Hot Spot - Spot Fire	Boehiem	43° 34.260' N	122° 38.143' W
Hot Spot - Spot Fire	Canton	43° 28.305' N	122° 39.182' W
Hot Spot - Spot Fire	Fire 12	43° 28.812' N	122° 42.811' W
Hot Spot - Spot Fire	Grouse	43° 34.020' N	122° 37.213' W
Hot Spot - Spot Fire	Inc. 347	43° 29.330' N	122° 40.279' W
Hot Spot - Spot Fire	Jack Butte	43° 34.224' N	122° 38.587' W
Hot Spot - Spot Fire	Lemon	43° 28.702' N	122° 39.321' W
Hot Spot - Spot Fire	Steeple Rock	43° 28.500' N	122° 28.784' W
Landmark			
Mobile Weather Unit		43° 24.960' N	122° 34.620' W
Mobile Weather Unit		43° 39.840' N	122° 37.741' W
Mobile Weather Unit		43° 18.720' N	123° 04.261' W
Mobile Weather Unit	IRAWS 18	43° 31.661' N	122° 31.458' W
Mobile Weather Unit	PR 7		
Repeater	CHD 1	43° 25.928' N	122° 43.857' W
Repeater	CHD 2	43° 35.137' N	122° 39.182' W
Repeater	CHD 3		
Repeater	CHD 4		
Restricted Water Source		43° 25.845' N	122° 35.673' W
Restricted Water Source		43° 24.719' N	122° 36.542' W
Staging Area	Little Rock Staging	43° 30.225' N	122° 37.829' W
Staging Area	Staging 23	43° 25.491' N	122° 46.616' W
Water Development or Draft Site		43° 28.964' N	122° 44.045' W
Water Source		43° 10.798' N	122° 28.744' W

**Jack Fire Table**

FC Point Type	Label	Latitude WGS84 DDM	Longitude WGS84 DDM
Camp	Hemlock Camp	43° 11.595' N	122° 42.264' W
Camp	Lake in the Woods Spike	43° 12.990' N	122° 43.348' W
Dip Site	Apple Dip	43° 16.322' N	122° 40.639' W
Dip Site	Carl Dip	43° 15.600' N	122° 37.841' W
Dip Site	Hemlock Lake Dip	43° 11.285' N	122° 42.083' W
Dip Site	Horseshoe Dip	43° 17.494' N	122° 37.189' W
Dip Site	Lake in the Woods Dip	43° 13.008' N	122° 43.446' W
Dip Site	Twin Lakes	43° 13.742' N	122° 35.522' W
Division Break		43° 20.142' N	122° 42.690' W
Division Break		43° 13.756' N	122° 42.350' W
Drop Point	Div 5	43° 20.746' N	122° 44.171' W
Drop Point	20	43° 22.600' N	122° 39.183' W
Drop Point	30	43° 20.223' N	122° 36.616' W
Drop Point	31	43° 19.080' N	122° 33.557' W
Drop Point	40	43° 20.405' N	122° 33.835' W
Drop Point	60	43° 17.739' N	122° 36.558' W
Drop Point	61	43° 17.446' N	122° 37.885' W
Drop Point	62	43° 19.973' N	122° 34.704' W
Drop Point	63	43° 17.694' N	122° 28.816' W
Drop Point	64	43° 16.553' N	122° 27.312' W
Drop Point	65	43° 15.680' N	122° 25.696' W
Drop Point	66	43° 18.022' N	122° 23.080' W
Drop Point	67	43° 17.475' N	122° 33.168' W
Drop Point	68	43° 14.696' N	122° 35.987' W
Drop Point	69	43° 14.951' N	122° 36.265' W
Drop Point	70	43° 13.440' N	122° 34.727' W
Drop Point	73	43° 13.354' N	122° 36.108' W
Drop Point	74	43° 15.667' N	122° 36.362' W
Drop Point	75	43° 14.820' N	122° 34.724' W
Drop Point	76	43° 16.895' N	122° 36.319' W
Drop Point	78	43° 13.376' N	122° 40.405' W
Drop Point	86	43° 13.493' N	122° 41.077' W
Drop Point	87	43° 14.366' N	122° 40.374' W
Drop Point	88	43° 12.854' N	122° 41.907' W
Drop Point	89	43° 13.366' N	122° 42.333' W
Drop Point	90	43° 14.745' N	122° 43.010' W
Drop Point	91	43° 16.347' N	122° 44.348' W
Drop Point	93	43° 17.204' N	122° 43.591' W
Drop Point	96	43° 18.314' N	122° 40.723' W
Hazard		43° 19.891' N	122° 41.576' W
Hazard		43° 14.360' N	122° 40.314' W
Hazard		43° 17.242' N	122° 34.200' W
Hazard		43° 22.122' N	122° 40.571' W
Helibase		43° 19.100' N	122° 40.230' W
Helispot	Strader Helibase	43° 20.668' N	122° 40.782' W
Helispot	10	43° 13.612' N	122° 34.934' W
Helispot	11	43° 15.322' N	122° 36.798' W
Helispot	15	43° 12.842' N	122° 36.600' W
Helispot	20	43° 13.853' N	122° 38.367' W
Helispot	4	43° 13.902' N	122° 33.444' W
Helispot	5	43° 17.507' N	122° 35.269' W
Helispot	8	43° 14.169' N	122° 42.626' W
Helispot	9	43° 16.505' N	122° 44.204' W
Helispot	Steamboat Helispot	43° 21.210' N	122° 43.730' W
Helispot	Tokenetee State Airstrip	43° 13.402' N	122° 25.237' W
Hot Spot - Spot Fire	Archie Creek Restart	43° 20.740' N	122° 45.981' W
Incident Command Post	Jack Fire ICP	43° 19.088' N	122° 39.892' W
Lookout		43° 15.480' N	122° 37.146' W
Mobile Retardant Base	Gel Plant	43° 14.170' N	122° 42.546' W
Mobile Weather Unit		43° 17.219' N	122° 33.143' W
Mobile Weather Unit		43° 12.113' N	122° 37.648' W
Repeater	CHD 5	43° 14.354' N	122° 36.094' W
Repeater	CHD 6	43° 08.007' N	122° 40.325' W
Repeater	F5 Doohadbe repeater	43° 12.160' N	122° 37.573' W
Repeater	L7 Rptr	43° 22.135' N	123° 03.742' W
Sling Site		43° 14.706' N	122° 36.013' W
Sling Site		43° 13.823' N	122° 35.307' W
Water Development or Draft Site		43° 13.819' N	122° 27.002' W
Water Development or Draft Site		43° 14.298' N	122° 29.259' W
Water Development or Draft Site		43° 14.404' N	122° 40.325' W
Water Development or Draft Site		43° 15.963' N	122° 31.178' W
Water Development or Draft Site		43° 23.378' N	122° 37.225' W
Water Source		43° 13.424' N	122° 41.967' W
Water Source		43° 13.602' N	122° 41.051' W
Water Source		43° 17.830' N	122° 42.866' W
Water Source		43° 13.319' N	122° 44.045' W
Water Source		43° 23.208' N	122° 37.205' W
Water Source		43° 12.877' N	122° 46.412' W
Water Source		43° 13.042' N	122° 39.196' W
Water Source		43° 13.146' N	122° 39.252' W
Water Source		43° 14.446' N	122° 31.630' W
Water Source		43° 13.783' N	122° 26.870' W
Water Source	Gravel Bin	43° 20.475' N	122° 43.507' W



**Air Operations**  
 OR-UPF-000265 OR-UPF-000373 OR-UPF-000450  
**Jack Fire: 23,664**  
**Rough Patch Complex: 12,991**  
**8/16/2021**



GB IMT 2  
 8/16/2021 2143  
 North American 1983 Datum.  
 Scale: 0 0.5 1 2 3 4 Miles

- ▬ Wildfire Daily Fire Perimeter
- Dip Site
- Camp
- Hazard
- Planned Fuel Break
- Planned Hand Line
- Planned Mixed Construction Line
- Planned Road as Line
- Planned Dozer Line
- Access or Improved Road
- Repair Line
- Escapement Route
- Escapement Route
- Other Property
- Pump
- Water Tank