

Branch I

Div A

Div G

Div C

Div E

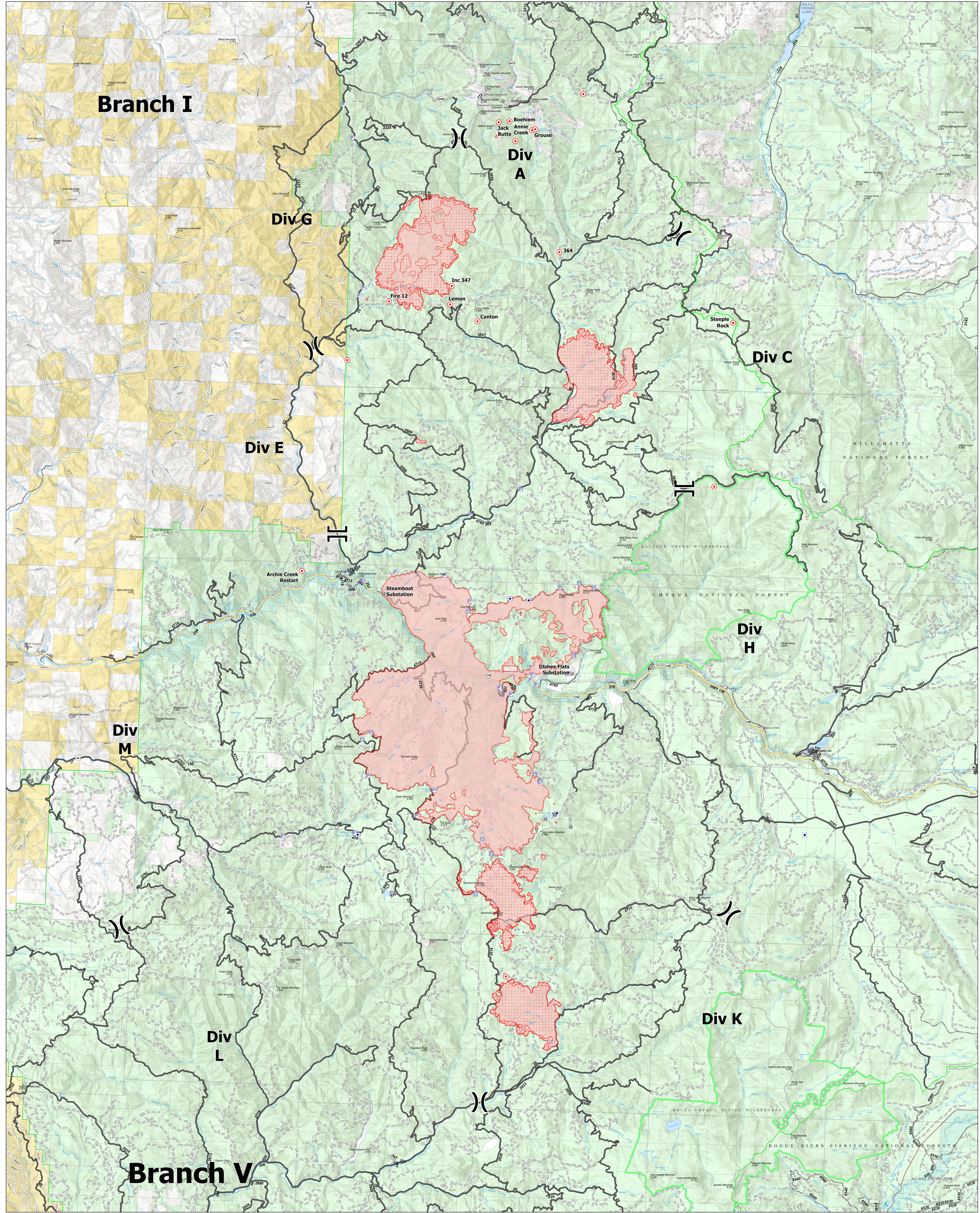
Div H

Div M

Div K

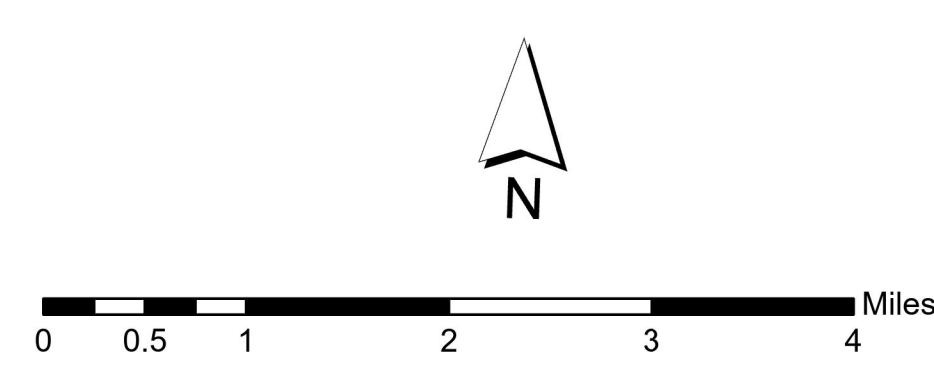
Div L

Branch V



Transportation

8/16/2021
 Jack Fire: 23,648 Ac
 OR-UPF-000265
 Rough Patch Complex: 12,271 Ac
 OR-UPF-000373



● Label Point	⊠ Water Tank	⬜ Administrative FS Boundary	⬜ Other State Lands	— Gravel Road
X Division Break	⊠ IR Intense Heat	⬜ Ranger District Boundary	⬜ Bureau of Land Management Lands	— Dirt Roads
⊠ Branch Break	⊠ IR Scattered Heat	⬜ FS Wilderness Boundary	⬜ Private, Local Government, Undesignated	— Unimproved Roads
⊠ Hot Spot - Spot Fire	⊠ Wildfire Daily Fire Perimeter	⬜ Area of Critical Environmental Concern	⬜ State Boundary Fill	— Secondary Highway
⊠ Value at Risk	⬜ Forest Service Land Unknown	⬜ Forest Service Land	⬜ Primary Hwy	— Paved Roads
⊠ Other Property	⬜ Ranger District Office		⬜ ARTERIAL	— Dirt (Not Paved)
⊠ Pump			— Paved Road	— World Hillshade