

Branch I

Div A

Div G

Div C

Div E

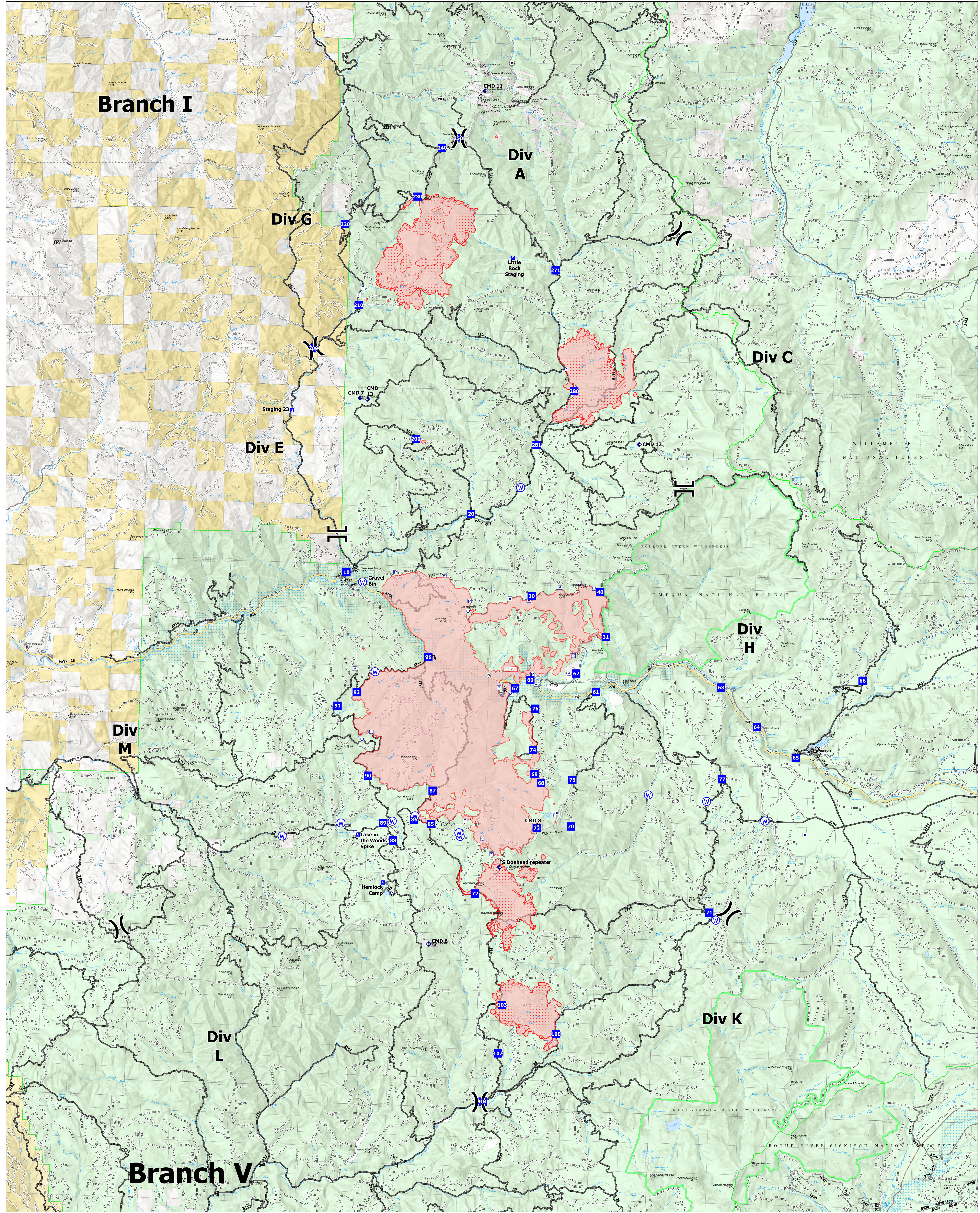
Div H

Div M

Div K

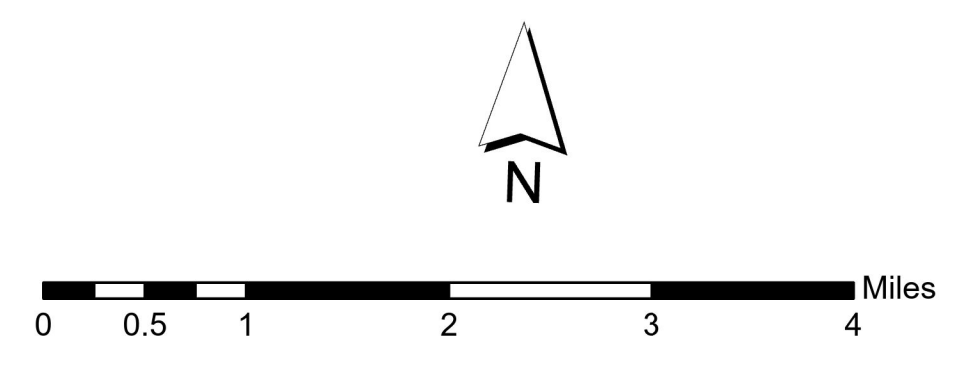
Div L

Branch V



Transportation

8/16/2021
 Jack Fire: 23,648 Ac
 OR-UPF-000265
 Rough Patch Complex: 12,271 Ac
 OR-UPF-000373



● Label Point	⊙ Water Source	■ Forest Service Land	■ Forest Service Land	— Paved Road
X Division Break	⊕ Pump	■ Ranger District Office	■ Other State Lands	— Gravel Road
I Branch Break	⊕ Water Tank	■ Administrative FS Boundary	■ Bureau of Land Management Lands	— Dirt Roads
⊕ Drop Point	⊕ Camp	■ Ranger District Boundary	■ Private; Local Government; Undesignated	— Unimproved Roads
⊕ Staging Area	⊕ Repeater	■ FS Wilderness Boundary	■ State Boundary Fill	— Secondary Highway
⊕ IR Intense Heat	⊕ IR Scattered Heat	■ Area of Critical Environmental Concern	■ ARTERIAL	— Paved Roads
⊕ Wildfire Daily Fire Perimeter				— Dirt (Not Paved)
				— World Hillshade