

# Branch I

# Div A

# Div G

# Div C

# Div E

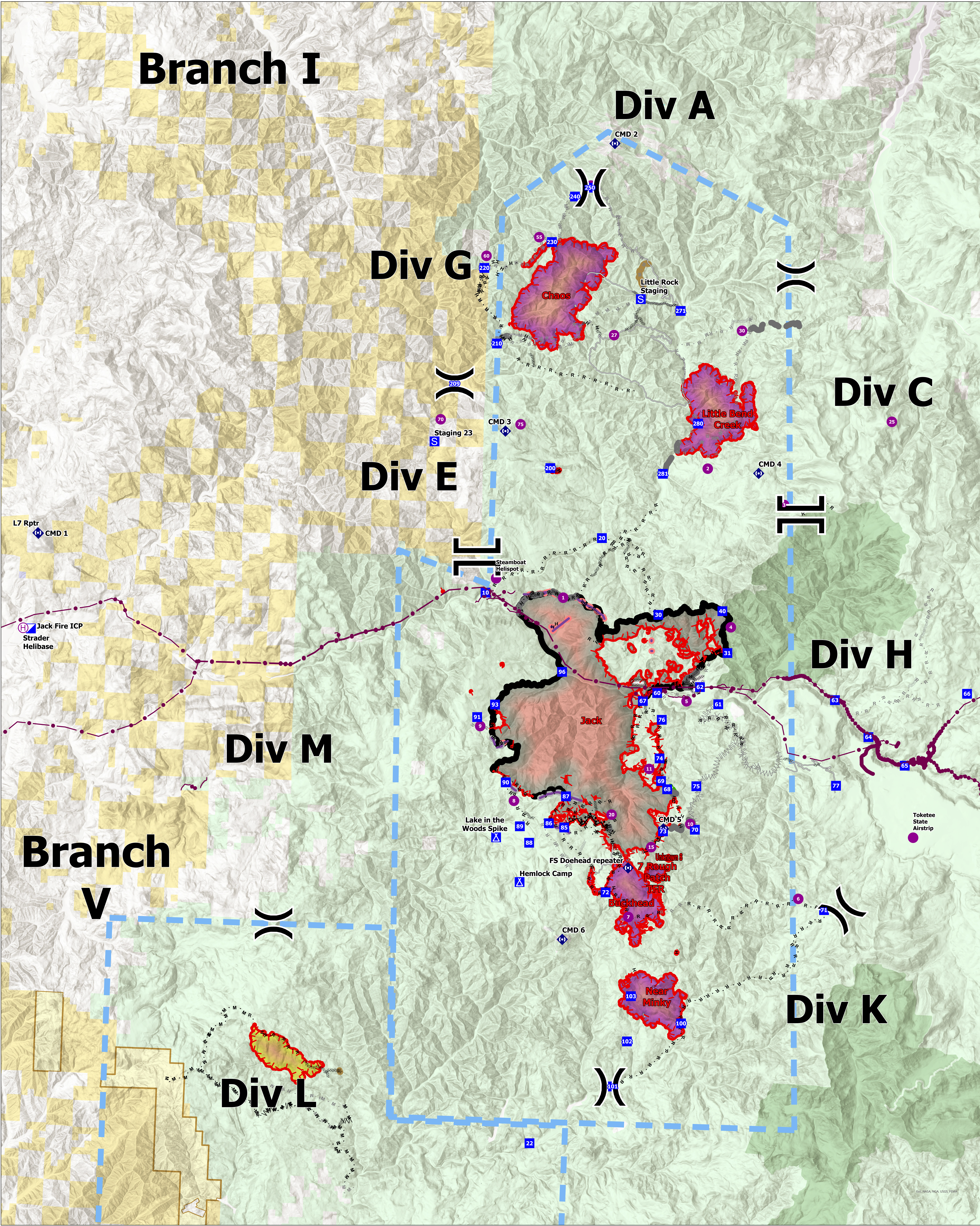
# Div H

# Div M

# Branch V

# Div K

# Div L



Briefing

## Briefing

Jack Fire (OR-UPF-00265): 23,664 Ac  
 Rough Patch Complex(OR-UPF-00373): 12,991 Ac  
 As of 08/15/2021 @ 2042



0 0.5 1 2 3 4 Miles

- |  |   |  |  |   |
|--|---|--|--|---|
| <ul style="list-style-type: none"> <li>Utility/Power Lines</li> <li>Wilderness</li> <li>Helispot</li> <li>Helibase</li> <li>Division Break</li> <li>Branch Break</li> <li>Incident Command Post</li> <li>Drop Point</li> </ul> | <ul style="list-style-type: none"> <li>Camp</li> <li>Staging Area</li> <li>Repeater</li> <li>Completed Burnout</li> <li>Completed Dozer Line</li> <li>Completed Fuel Break</li> <li>Completed Hand Line</li> <li>Completed Mixed Construction Line</li> </ul> | <ul style="list-style-type: none"> <li>Planned Dozer Line</li> <li>Planned Fuel Break</li> <li>Planned Hand Line</li> <li>Planned Mixed Construction Line</li> <li>Planned Road as Line</li> <li>Access or Improved Road</li> <li>Other</li> </ul> | <ul style="list-style-type: none"> <li>Repair Line</li> <li>Escape Route</li> <li>Foam Drop</li> <li>Retardant Drop</li> <li>Temporary Flight Restriction</li> <li>Fire Edge</li> <li>Controlled Line</li> <li>Wildfire Daily Fire Perimeter; Devils Knob Complex</li> </ul> | <ul style="list-style-type: none"> <li>Wildfire Daily Fire Perimeter; Jack Fire</li> <li>Wildfire Daily Fire Perimeter; Rough Patch Complex</li> <li>U.S. Forest Service</li> <li>Bureau of Land Management</li> <li>Bureau of Indian Affairs</li> <li>Other Federal Land</li> <li>State Land</li> <li>Other Land, Including Private</li> </ul> |
|--|---|--|--|---|