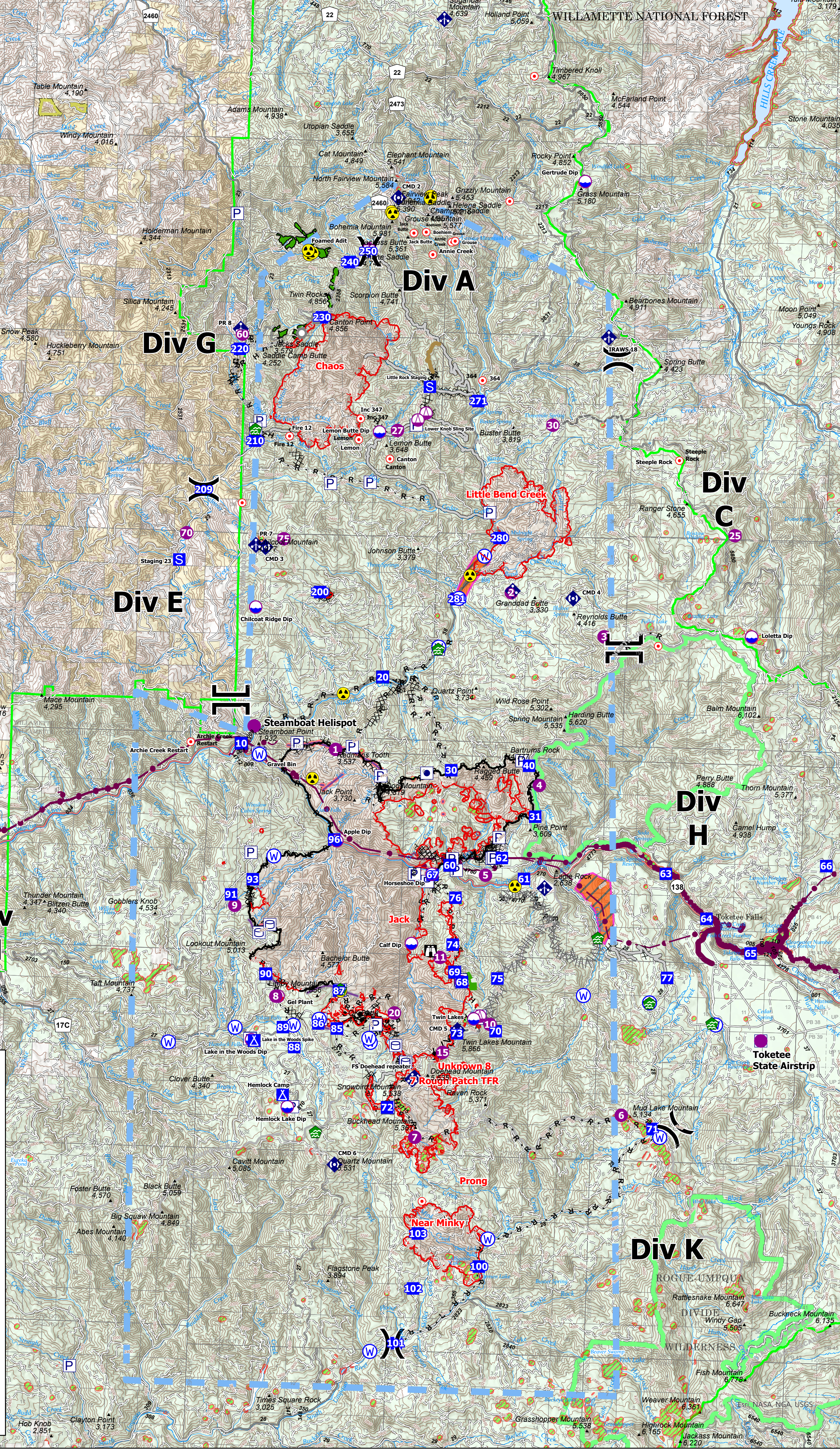


FC Point Type	Label	Comments	Latitude WGS84 DDM	Longitude WGS84 DDM
Aerial Hazard			43° 09.943' N	122° 52.852' W
Aerial Hazard			43° 09.969' N	122° 52.865' W
Aerial Hazard			43° 03.129' N	122° 38.774' W
Aerial Hazard			42° 55.596' N	122° 57.013' W
Aerial Hazard			42° 56.607' N	122° 51.364' W
Aerial Hazard			42° 43.716' N	122° 36.487' W
Dip Site	Twin Lakes	Twin Lakes, approved	43° 13.742' N	122° 35.522' W
Dip Site	Hemlock Lake Dip	Hemlock Lake, approved	43° 11.285' N	122° 42.087' W
Dip Site	Lake in the Woods Dip	Lake in the Woods, approved	43° 13.008' N	122° 43.446' W
Dip Site	Hawk Lake	Snoke, Bucket	42° 37.218' N	121° 38.101' W
Dip Site	Calf Dip		43° 15.660' N	122° 37.841' W
Dip Site	Horseshoe Dip	Calf Dip	43° 17.494' N	122° 37.189' W
Dip Site	Apple Dip	Apple Dip	43° 18.282' N	122° 40.630' W
Dip Site	Loletta Dip		43° 23.950' N	122° 26.001' W
Dip Site	Lemon Butte Dip		43° 29.000' N	122° 39.584' W
Dip Site	Gertrude Dip		43° 35.717' N	122° 32.484' W
Dip Site	Chicoat Ridge Dip	No Tank	43° 24.317' N	122° 43.818' W
Dip Site	Red Top Dip		43° 04.940' N	122° 57.396' W
Dip Site	Panther Peak	Long Line	42° 46.193' N	123° 02.915' W
Dip Site	Stouts		42° 52.411' N	123° 03.359' W
Dip Site	Galesville		42° 50.885' N	123° 10.142' W
Dip Site	Poole		42° 55.938' N	123° 07.402' W
Dip Site	O'Shea		42° 55.059' N	123° 14.394' W
Dip Site	Beals		42° 56.870' N	123° 10.218' W
Dip Site	Snow		42° 49.923' N	123° 06.145' W
Dip Site	Dorn Dip	Type 1	42° 57.300' N	122° 54.279' W
Dip Site	Dummet Dip	Type 2	43° 02.237' N	122° 48.471' W
Dip Site	Drew Lake Dip	Shared dip with Devils Knob	42° 47.580' N	122° 56.361' W
Dip Site	Marty Dip		42° 49.898' N	122° 06.149' W
Dip Site	Gales East Dip		42° 50.585' N	123° 09.623' W
Dip Site	Mule Dip	Private, Seneca	42° 58.142' N	122° 47.090' W
Dip Site	Work		42° 56.288' N	123° 04.974' W
Dip Site	Tin Hat Dip		42° 58.773' N	122° 56.881' W
Dip Site	Zinc Dip		43° 03.010' N	122° 47.036' W
Dip Site			43° 13.602' N	122° 41.051' W
Helibase	Strader Helibase		43° 19.100' N	123° 04.230' W
Helibase	Tiller Helibase	Type 2	42° 55.837' N	122° 57.064' W
Helispot	Steamboat Helispot	T1, T2, T3 approved	43° 21.210' N	122° 43.730' W
Helispot	Toketee State Airstrip	T1, T2, T3 approved	43° 13.402' N	122° 25.237' W
Helispot	4	T2, T3, Dust Abatement	43° 19.902' N	122° 33.444' W
Helispot	5	T1, T2, T3 - Private Grass	43° 17.507' N	122° 35.269' W
Helispot	2	H2, T2 approved, RAWS site	43° 24.913' N	122° 34.670' W
Helispot	3	H3, T2 Approved	43° 23.838' N	122° 31.293' W
Helispot	1	H1, T3 approved	43° 20.668' N	122° 40.782' W
Helispot	8	H8, T2 capable: Hover hole.	43° 14.169' N	122° 42.626' W
Helispot	6	H6, T2 approved	43° 11.348' N	122° 30.142' W
Helispot	7	H-7, T3 approved	43° 10.600' N	122° 37.493' W
Helispot	11	H-11, T3	43° 15.322' N	122° 36.798' W
Helispot	15	H-15, T3	43° 12.842' N	122° 36.600' W
Helispot	20	only T3 approved, needs	43° 13.833' N	122° 38.367' W
Helispot	9	only T3 approved, 1 way	43° 16.505' N	122° 44.204' W
Helispot	10	Approved for T-3, by Air	43° 13.612' N	122° 34.934' W
Helispot	60	Needs approval: chart,	43° 31.436' N	122° 44.627' W
Helispot	70	Needs approval	43° 26.199' N	122° 46.380' W
Helispot	1	Type 2	42° 56.045' N	123° 02.396' W
Helispot	75	Approved by AOBID Markason	43° 26.125' N	122° 42.891' W
Helispot	30	Approved by AOBID Markason	43° 29.324' N	122° 33.368' W
Helispot	25	Slight slope down toward	43° 26.584' N	122° 26.710' W
Helispot	8		42° 57.750' N	122° 44.088' W
Helispot	27		43° 29.055' N	122° 38.944' W
Helispot	50		43° 33.775' N	122° 40.171' W
Helispot	31	Type 2	42° 55.195' N	122° 51.099' W
Helispot	32	Type 2	42° 53.532' N	122° 50.206' W
Helispot	33	Type 3	42° 54.143' N	122° 52.018' W
Helispot	34	Type 3, 2	42° 54.185' N	122° 53.049' W
Helispot	90		42° 55.206' N	123° 07.528' W
Helispot	200		42° 49.705' N	123° 05.778' W
Helispot	16	Gravel Pit	43° 07.275' N	122° 54.333' W
Helispot	190		42° 45.308' N	123° 01.026' W
Helispot	17	Dirt Flat	43° 05.353' N	122° 55.914' W
Helispot	7	Beaver	42° 57.195' N	122° 48.514' W
Helispot	11	Juvenile	42° 58.875' N	122° 52.086' W
Helispot	21	Boulder	43° 03.218' N	122° 46.569' W
Helispot	22	U Falls	43° 03.307' N	122° 41.433' W
Helispot	44		42° 54.938' N	122° 42.449' W
Helispot	19		43° 08.735' N	122° 46.374' W
Sling Site		utilize hardpack, away from	43° 14.706' N	122° 36.013' W
Sling Site			43° 13.823' N	122° 35.307' W
Sling Site	Lower Knob Sling Site		43° 29.534' N	122° 37.934' W

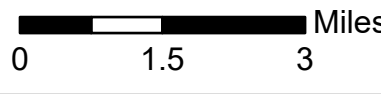
Incident Name	Latitude WGS84 DDM	Longitude WGS84 DDM
Annie Creek (Rough Patch Complex)	43° 34.020' N	122° 37.213' W
Annie Creek (Rough Patch Complex)	43° 34.020' N	122° 37.213' W
Boehiem (Rough Patch Complex)	43° 34.260' N	122° 38.143' W
Canton (Rough Patch Complex)	43° 28.305' N	122° 39.182' W
Divide (Rough Patch Complex)	43° 35.136' N	122° 35.179' W
Fire 12 (Rough Patch Complex)	43° 28.812' N	122° 42.811' W
Fuller (Rough Patch Complex)	43° 23.637' N	122° 29.341' W
Inc 347 (Rough Patch Complex)	43° 29.330' N	122° 40.279' W
Inc 355 (Rough Patch Complex)	43° 38.424' N	122° 34.435' W
Inc 364 (Rough Patch Complex)	43° 30.432' N	122° 35.947' W
Jack Butte (Rough Patch Complex)	43° 34.224' N	122° 38.587' W
Lemon (Rough Patch Complex)	43° 28.782' N	122° 40.321' W
O'Shea Creek (Skyline Ridge Cpx)	42° 54.654' N	123° 13.161' W
O'Shea Creek (Skyline Ridge Cpx)	42° 54.691' N	123° 13.227' W
O'Shea Creek (Skyline Ridge Cpx)	42° 54.848' N	123° 13.349' W
O'Shea Creek (Skyline Ridge Cpx)	42° 54.952' N	123° 13.343' W
O'Shea Creek (Skyline Ridge Cpx)	42° 55.273' N	123° 13.302' W
O'Shea Creek (Skyline Ridge Cpx)	42° 54.654' N	123° 13.189' W
O'Shea Creek (Skyline Ridge Cpx)	42° 54.959' N	123° 12.774' W
Pilot (Rough Patch Complex)	43° 33.678' N	122° 37.879' W
Poole Creek (Skyline Ridge Cpx)	42° 52.977' N	123° 05.958' W
Poole Creek (Skyline Ridge Cpx)	42° 53.032' N	123° 05.985' W
Poole Creek (Skyline Ridge Cpx)	42° 53.421' N	123° 05.075' W
Poole Creek (Skyline Ridge Cpx)	42° 53.409' N	123° 05.118' W
Poole Creek (Skyline Ridge Cpx)	42° 54.547' N	123° 02.655' W
Rough Patch Complex	43° 08.934' N	122° 37.162' W
Salmon Creek 2 (Rough Patch Complex)	43° 27.030' N	122° 44.431' W
Steeple Rock MF (Rough Patch Complex)	43° 28.500' N	122° 28.784' W



Pilots
 Jack Fire: 23,664
 Rough Patch Complex: 12,991
 8/17/2021



GB Team 2
 8/16/2021 2314
 North American 1983 Datum



- Label Point
- Dip Site
- Mobile Retardant Base
- Helispot
- Helibase
- Sling Site
-) Division Break
- | Branch Break
- Incident Command Post
- Drop Point
- Camp
- Staging Area
- Lookout
- Hot Spot - Spot Fire
- Landmark
- Water Development or Draft Site
- Mobile Weather Unit
- Repeater
- Hazard
- Water Source
- Restricted Water Source
- Other Property
- Pump
- Water Tank
- Sling Site
- Completed Burnout
- Completed Dozer Line
- Completed Hand Line
- Completed Road as Line
- Planned Dozer Line
- N Planned Fuel Break
- H Planned Hand Line
- M Planned Mixed Construction Line
- R Planned Road as Line
- Access or Improved Road
- Repair Line
- Escape Route
- Foam Drop
- Retardant Drop
- Temporary Flight Restriction
- Contained Line
- Sensitive Areas
- Other
- Utility Power Lines
- Aerial Fire Retardant Avoidance Areas
- Dripper Timber Sale (Helicopter Logging)