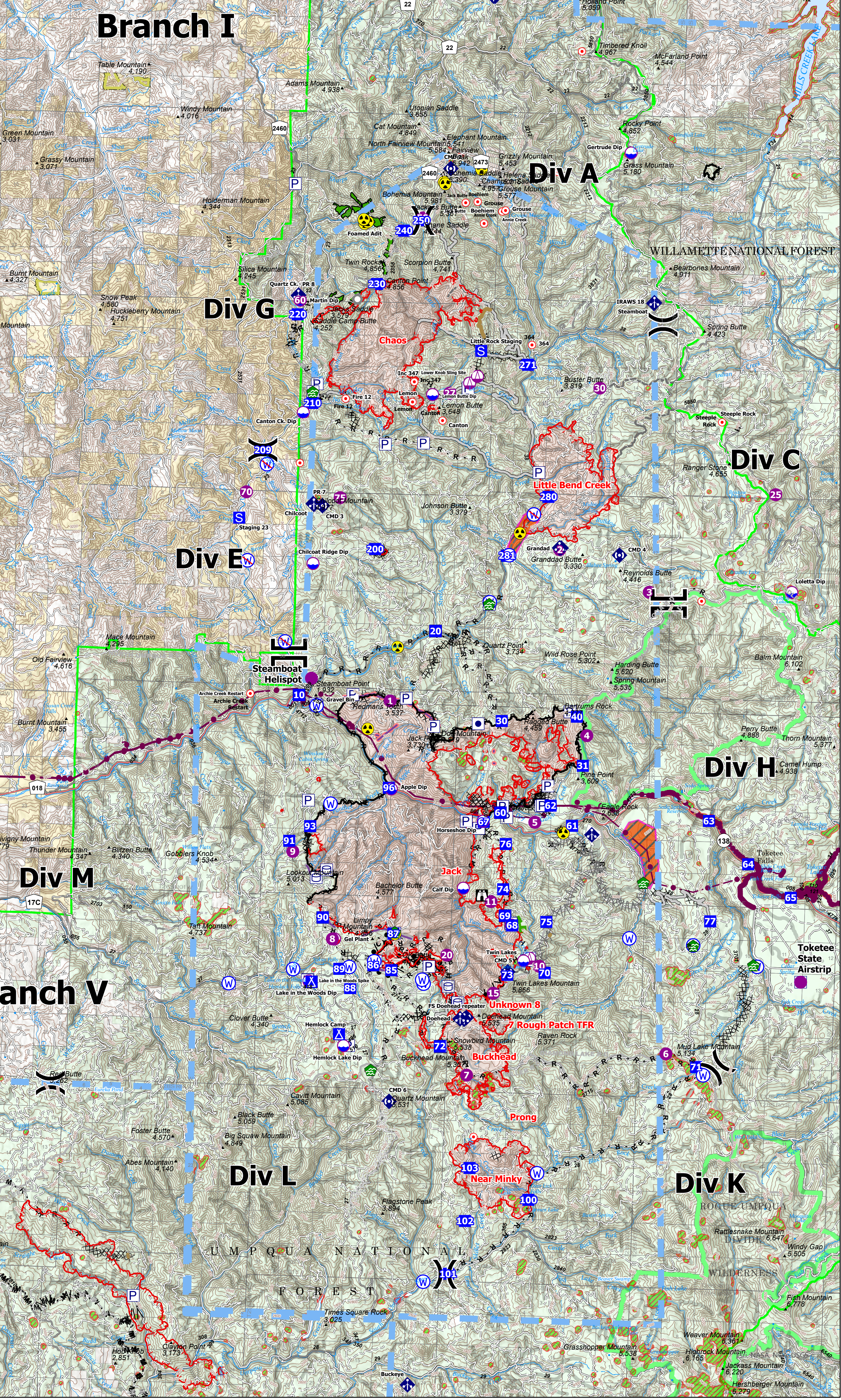


FC Point Type	Label	Comments	Latitude WGS84 DDM	Longitude WGS84 DDM
Aerial Hazard			43° 09.943' N	122° 52.852' W
Aerial Hazard			43° 09.969' N	122° 52.865' W
Aerial Hazard			43° 03.129' N	122° 38.774' W
Aerial Hazard			42° 55.596' N	122° 57.013' W
Aerial Hazard			42° 56.607' N	122° 51.364' W
Aerial Hazard			42° 43.716' N	122° 36.487' W
Dip Site	Yamsay Ranch Dip	Yamsay Dip	42° 43.959' N	121° 25.478' W
Dip Site	Twin Lakes	Twin Lakes, approved	42° 13.742' N	122° 35.522' W
Dip Site	Hemlock Lake Dip	Hemlock Lake, approved	43° 11.285' N	122° 42.083' W
Dip Site	Lake in the Woods Dip	Lake in the Woods, approved	43° 13.068' N	122° 43.446' W
Dip Site	Hawk Lake	Snowed, Bucket	42° 37.218' N	121° 38.101' W
Dip Site	Moondance	Snowed, Bucket	42° 39.075' N	121° 18.162' W
Dip Site	Little Dam	Bucket Only	42° 43.950' N	121° 25.470' W
Dip Site	L Pond		42° 46.209' N	121° 16.241' W
Dip Site	Calf Dip		43° 15.660' N	122° 37.841' W
Dip Site	Horseshoe Dip	Calf Dip	43° 17.494' N	122° 37.189' W
Dip Site	Apple Dip	Apple Dip	43° 18.282' N	122° 40.630' W
Dip Site	Hunter Creek Dip	10' incline down to strong	42° 51.804' N	121° 17.974' W
Dip Site	Loletta Dip		42° 33.990' N	122° 26.001' W
Dip Site	Lemon Butte Dip		43° 29.000' N	122° 39.504' W
Dip Site	Gertrude Dip		43° 35.717' N	122° 32.484' W
Dip Site	Chicoat Ridge Dip	No Tank	43° 24.317' N	122° 43.818' W
Dip Site	Red Top Dip		43° 04.940' N	122° 57.396' W
Dip Site	Panther Peak	Long Line	42° 46.193' N	123° 02.915' W
Dip Site	Stouts		42° 52.411' N	123° 03.359' W
Dip Site	Galesville		42° 50.885' N	123° 10.142' W
Dip Site	Poole		42° 55.938' N	123° 07.402' W
Dip Site	O'Shea		42° 55.059' N	123° 14.394' W
Dip Site	Beas		42° 56.870' N	123° 10.218' W
Dip Site	Snow		42° 49.923' N	122° 06.145' W
Dip Site	Dom Dip	Type 1	42° 57.300' N	122° 54.279' W
Dip Site	Dumont Dip	Type 2	43° 02.237' N	122° 48.471' W
Dip Site	Drew Lake Dip	Shared dip with Devils Knob	42° 47.580' N	122° 56.361' W
Dip Site	Marty Dip		42° 49.898' N	123° 06.149' W
Dip Site	Gales East Dip		42° 50.585' N	123° 09.623' W
Dip Site	Mule Dip	Private, Seneca	42° 58.142' N	122° 47.090' W
Dip Site	Work		42° 56.288' N	123° 04.974' W
Dip Site	Tin Hat Dip		42° 57.778' N	122° 39.504' W
Dip Site	Zinc Dip		43° 03.010' N	122° 47.036' W
Dip Site	Martin Dip		43° 13.602' N	122° 41.051' W
Dip Site	Martin Dip		43° 31.436' N	122° 44.627' W
Dip Site	Canton Ck. Dip		43° 28.400' N	122° 44.370' W
Helibase	Strader Helibase		43° 19.100' N	123° 04.230' W
Helibase	Tiller Helibase	Type 2	42° 55.837' N	122° 57.064' W
Helispot	H-1	H-1	42° 40.831' N	121° 26.614' W
Helispot	Steamboat Helispot	T1, T2, T3 approved	43° 21.210' N	122° 43.730' W
Helispot	Toketee State Airstrip	T1, T2, T3 approved	43° 13.402' N	122° 36.500' W
Helispot	4	T1, T2, T3, Dust Abatement	43° 19.902' N	122° 33.444' W
Helispot	5	T1, T2, T3 - Private Grass	43° 17.507' N	122° 35.269' W
Helispot	2	H2, T2 approved, RAW5 site	43° 24.913' N	122° 34.670' W
Helispot	3	H3, T2 Approved	43° 23.838' N	122° 31.293' W
Helispot	1	H1, T3 approved	43° 20.668' N	122° 40.782' W
Helispot	8	H8, T2 capable, Hover hole	43° 14.169' N	122° 42.626' W
Helispot	6	H6, T2 approved	43° 11.348' N	122° 30.142' W
Helispot	7	H-7, T3 approved	43° 10.600' N	122° 37.493' W
Helispot	11	H-11, T3	43° 13.402' N	122° 36.500' W
Helispot	15	H-15, T3	43° 12.842' N	122° 36.600' W
Helispot	H-5	All Types	42° 43.362' N	121° 26.532' W
Helispot	H-2	All Types	42° 38.333' N	121° 28.680' W
Helispot	H-3	T1, T3	42° 34.628' N	121° 26.326' W
Helispot	20	only T-3 approved, needs	43° 13.833' N	122° 38.367' W
Helispot	9	only T-3 approved, 1 way	43° 16.505' N	122° 44.204' W
Helispot	10	Approved for T-3, by Air	43° 13.612' N	122° 34.934' W
Helispot	60	Needs approval - chart	43° 31.436' N	122° 44.627' W
Helispot	70	Needs approval	43° 31.436' N	122° 44.627' W
Helispot	101	Type 2	42° 56.045' N	122° 02.296' W
Helispot	75	Approved by AORD Markson	43° 26.125' N	122° 42.891' W
Helispot	30	Approved by AORD Markson	42° 29.324' N	122° 33.368' W
Helispot	25	Slight slope down toward	43° 26.584' N	122° 26.710' W
Helispot	108		43° 57.750' N	122° 44.088' W
Helispot	27		43° 29.055' N	122° 38.944' W
Helispot	50		43° 33.775' N	122° 40.171' W
Helispot	131	Type 2	42° 55.195' N	122° 51.099' W
Helispot	132	Type 2	42° 53.532' N	122° 52.286' W
Helispot	133	Type 3	42° 54.142' N	122° 52.018' W
Helispot	134	Type 3, 2	42° 54.185' N	122° 53.049' W
Helispot	90	Helispot 90	42° 55.206' N	123° 07.528' W
Helispot	200		42° 49.705' N	123° 05.778' W
Helispot	116	Gravel Pit	43° 07.275' N	122° 54.333' W
Helispot	190		42° 45.308' N	123° 01.026' W
Helispot	115	Dirt Flat	43° 05.353' N	122° 55.914' W
Helispot	107	Beaver	42° 57.195' N	122° 48.514' W
Helispot	114	Dobsonie	42° 58.870' N	122° 52.286' W
Helispot	121	Boulder	43° 03.218' N	122° 46.569' W
Helispot	122	tu Fels	43° 03.303' N	122° 41.433' W
Helispot	119		43° 08.735' N	122° 46.374' W
Helispot	144		42° 54.938' N	122° 42.449' W
Sling Site			43° 14.706' N	122° 36.013' W
Sling Site		utilize handpack, away from	43° 13.823' N	122° 35.307' W
Sling Site		Lower Knob Sling Site	43° 29.345' N	122° 38.218' W
Sling Site			43° 29.534' N	122° 37.934' W



Incident Name	Latitude WGS84 DDM	Longitude WGS84 DDM
Annie Creek (Rough Patch Complex)	43° 34.020' N	122° 37.213' W
Annie Creek (Rough Patch Complex)	43° 34.020' N	122° 37.213' W
Bohemian (Rough Patch Complex)	43° 34.260' N	122° 38.143' W
Canton (Rough Patch Complex)	43° 28.305' N	122° 39.182' W
Darlene 0572 NE	43° 36.99920800' N	121° 28.27155798' W
Darlene 0572 NE	43° 37.13125999' N	121° 28.27877599' W
Darlene 0572 NE	43° 36.34198215' N	121° 28.24870494' W
Darlene 0572 NE	43° 36.68439060' N	121° 28.22336135' W
Divide (Rough Patch Complex)	43° 35.136' N	122° 35.179' W
Fire 12 (Rough Patch Complex)	43° 28.812' N	122° 42.811' W
Fuller (Rough Patch Complex)	43° 23.637' N	122° 29.341' W
Inc 347 (Rough Patch Complex)	43° 29.330' N	122° 40.279' W
Inc 355 (Rough Patch Complex)	43° 38.424' N	122° 34.435' W
Inc 364 (Rough Patch Complex)	43° 30.432' N	122° 35.947' W
Jack Butte (Rough Patch Complex)	43° 34.224' N	122° 38.587' W
Lemon (Rough Patch Complex)	43° 28.782' N	122° 40.321' W
O'Shea Creek (Skyline Ridge Cpx)	42° 54.654' N	123° 13.161' W
O'Shea Creek (Skyline Ridge Cpx)	42° 54.691' N	123° 13.227' W
O'Shea Creek (Skyline Ridge Cpx)	42° 54.848' N	123° 13.349' W
O'Shea Creek (Skyline Ridge Cpx)	42° 54.952' N	123° 13.343' W
O'Shea Creek (Skyline Ridge Cpx)	42° 55.273' N	123° 13.302' W
O'Shea Creek (Skyline Ridge Cpx)	42° 54.654' N	123° 13.189' W
O'Shea Creek (Skyline Ridge Cpx)	42° 54.959' N	123° 12.774' W
Pilot (Rough Patch Complex)	43° 33.678' N	122° 37.879' W
Poole Creek (Skyline Ridge Cpx)	42° 52.977' N	123° 05.958' W
Poole Creek (Skyline Ridge Cpx)	42° 53.032' N	123° 05.985' W
Poole Creek (Skyline Ridge Cpx)	42° 53.421' N	123° 05.075' W
Poole Creek (Skyline Ridge Cpx)	42° 53.409' N	123° 05.118' W
Poole Creek (Skyline Ridge Cpx)	42° 54.547' N	123° 02.655' W
Rough Patch Complex	43° 08.934' N	122° 37.162' W
Salmon Creek 2 (Rough Patch Complex)	43° 27.030' N	122° 44.431' W
Steeple Rock MF (Rough Patch Complex)	43° 28.500' N	122° 28.784' W

Pilots
 Jack Fire: 23,728
 Rough Patch Complex: 17,559
 08/19/2021

GB Team 2
 8/19/2021 0536
 North American 1983 Datum

0 1.5 3 Miles

<ul style="list-style-type: none"> Dip Site Mobile Retardant Base Helispot Helibase Sling Site Division Break Branch Break Incident Command Post Drop Point Camp 	<ul style="list-style-type: none"> Staging Area Lookout Hot Spot - Spot Fire Landmark Water Development or Draft Site Mobile Weather Unit Repeater Hazard Water Source Restricted Water Source 	<ul style="list-style-type: none"> Other Property Pump Water Tank Completed Burnout Completed Fuel Break Completed Hand Line Completed Mixed Construction Line Completed Road as Line Planned Dozer Line 	<ul style="list-style-type: none"> Planned Fuel Break Planned Hand Line Planned Mixed Construction Line Planned Road as Line Completed Road as Line Other Repair Line Escape Route Foam Drop Retardant Drop 	<ul style="list-style-type: none"> Route Temporary Flight Restriction Fire Edge Contained Line Sensitive Areas Utility Power Lines Other TECPS Aerial Fire Retardant Avoidance Dripper Timber Sale (Helicopter Logging) Aquatic Aerial Fire Retardant Avoidance
--	--	---	---	---