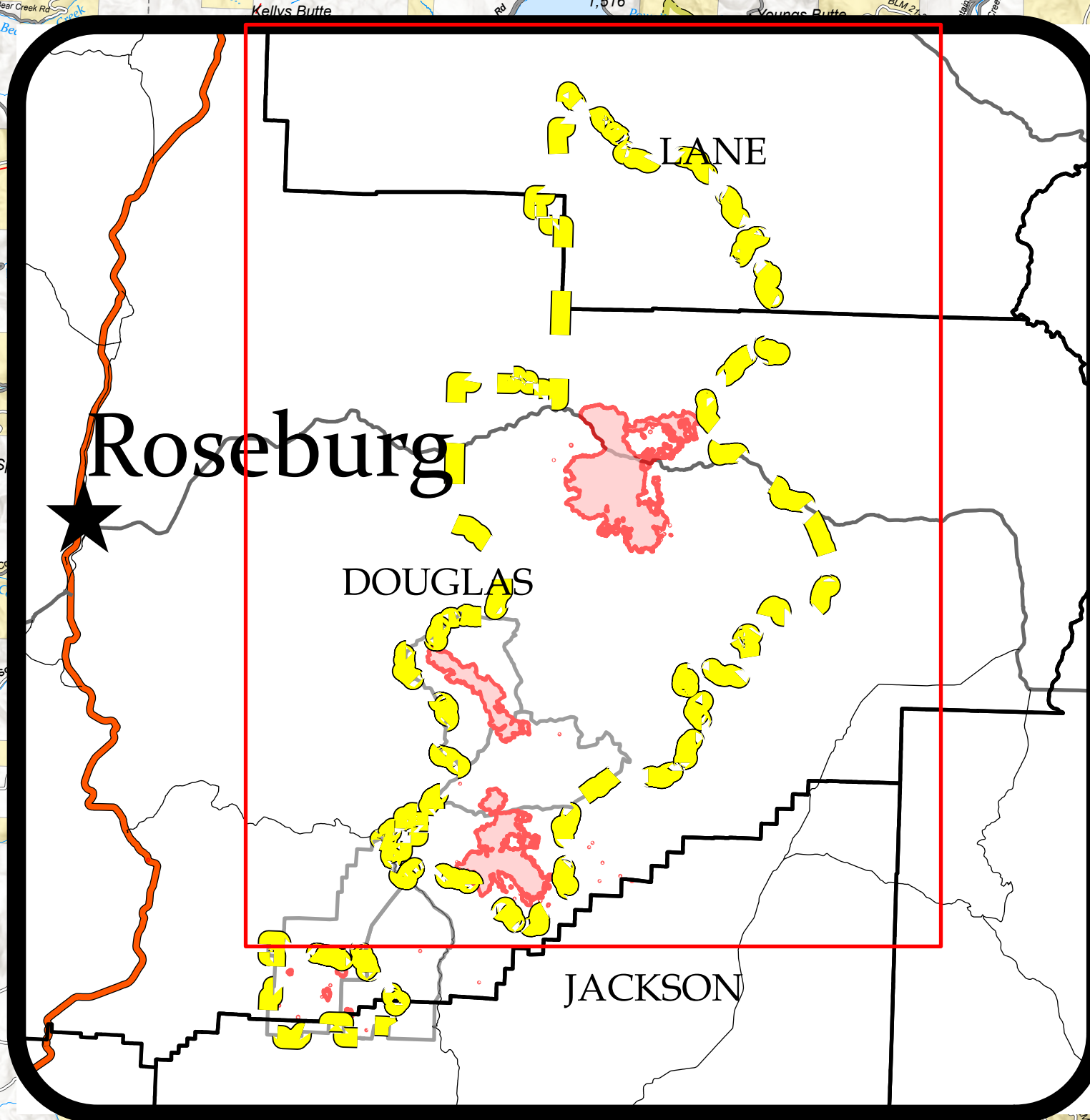


123°10'W 123°5'W 123°W 122°55'W 122°50'W 122°45'W 122°40'W 122°35'W 122°30'W 122°25'W 122°20'W



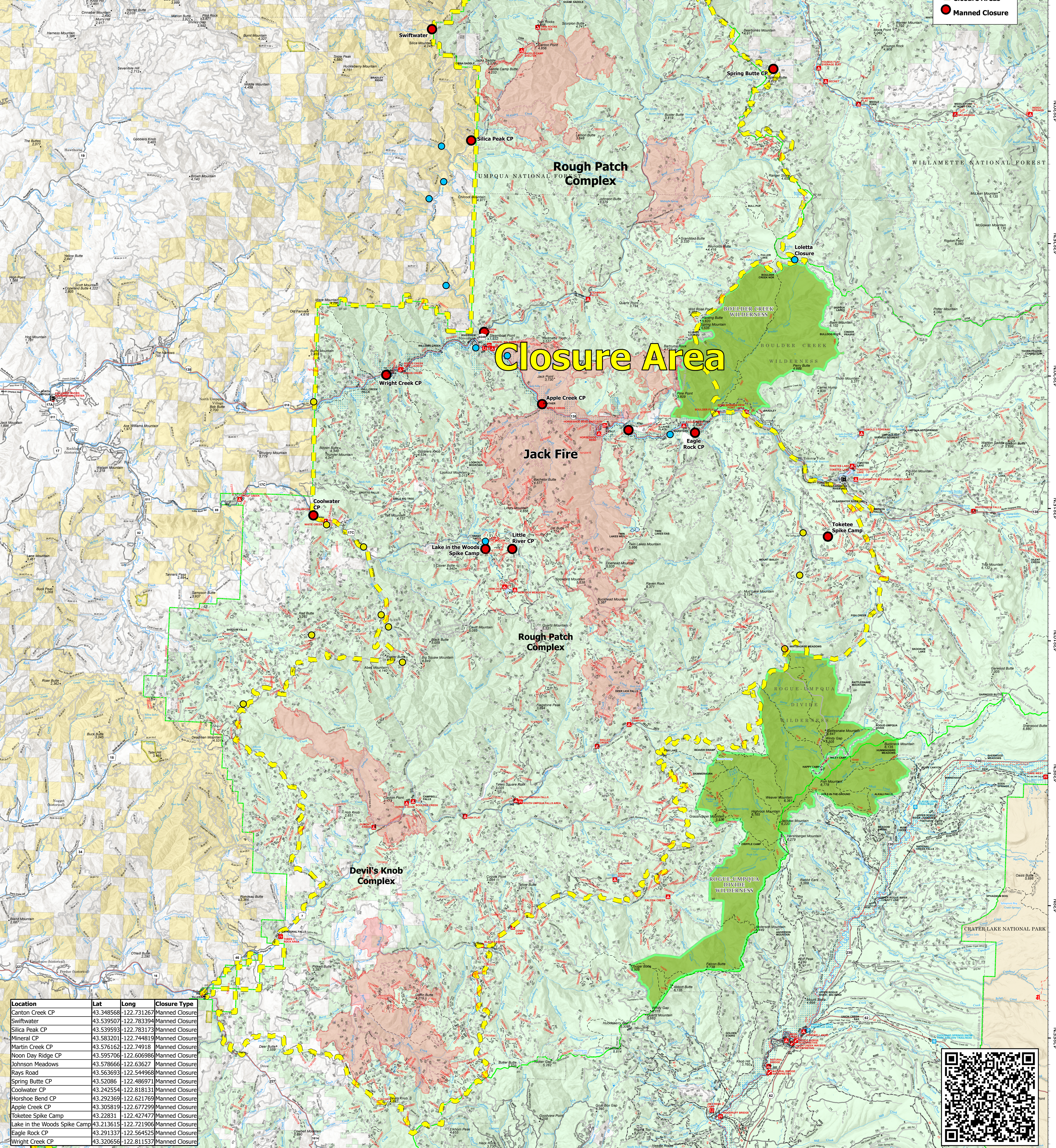
# Closure Map

Jack Fire / Rough Patch Complex / Devil's Knob Complex

8/16/2021

**Legend**

- Fire Perimeter
- Closure Areas
- Manned Closure



**Closure Area**

Location	Lat	Long	Closure Type
Canton Creek CP	43.348568	-122.731267	Manned Closure
Swiftwater	43.539507	-122.783394	Manned Closure
Silica Peak CP	43.539593	-122.783173	Manned Closure
Mineral CP	43.583201	-122.744819	Manned Closure
Martin Creek CP	43.576162	-122.749118	Manned Closure
Noon Day Ridge CP	43.595706	-122.606986	Manned Closure
Johnson Meadows	43.578666	-122.63627	Manned Closure
Rays Road	43.563693	-122.544968	Manned Closure
Spring Butte CP	43.52086	-122.486971	Manned Closure
Coolwater CP	43.242554	-122.818131	Manned Closure
Horshoe Bend CP	43.292369	-122.621769	Manned Closure
Apple Creek CP	43.305819	-122.672799	Manned Closure
Toketee Spike Camp	43.22831	-122.427477	Manned Closure
Lake in the Woods Spike Camp	43.213615	-122.721906	Manned Closure
Eagle Rock CP	43.291337	-122.564525	Manned Closure
Wright Creek CP	43.320656	-122.811537	Manned Closure



123°5'W 123°W 122°55'W 122°50'W 122°45'W 122°40'W 122°35'W 122°30'W 122°25'W 122°20'W 122°15'W