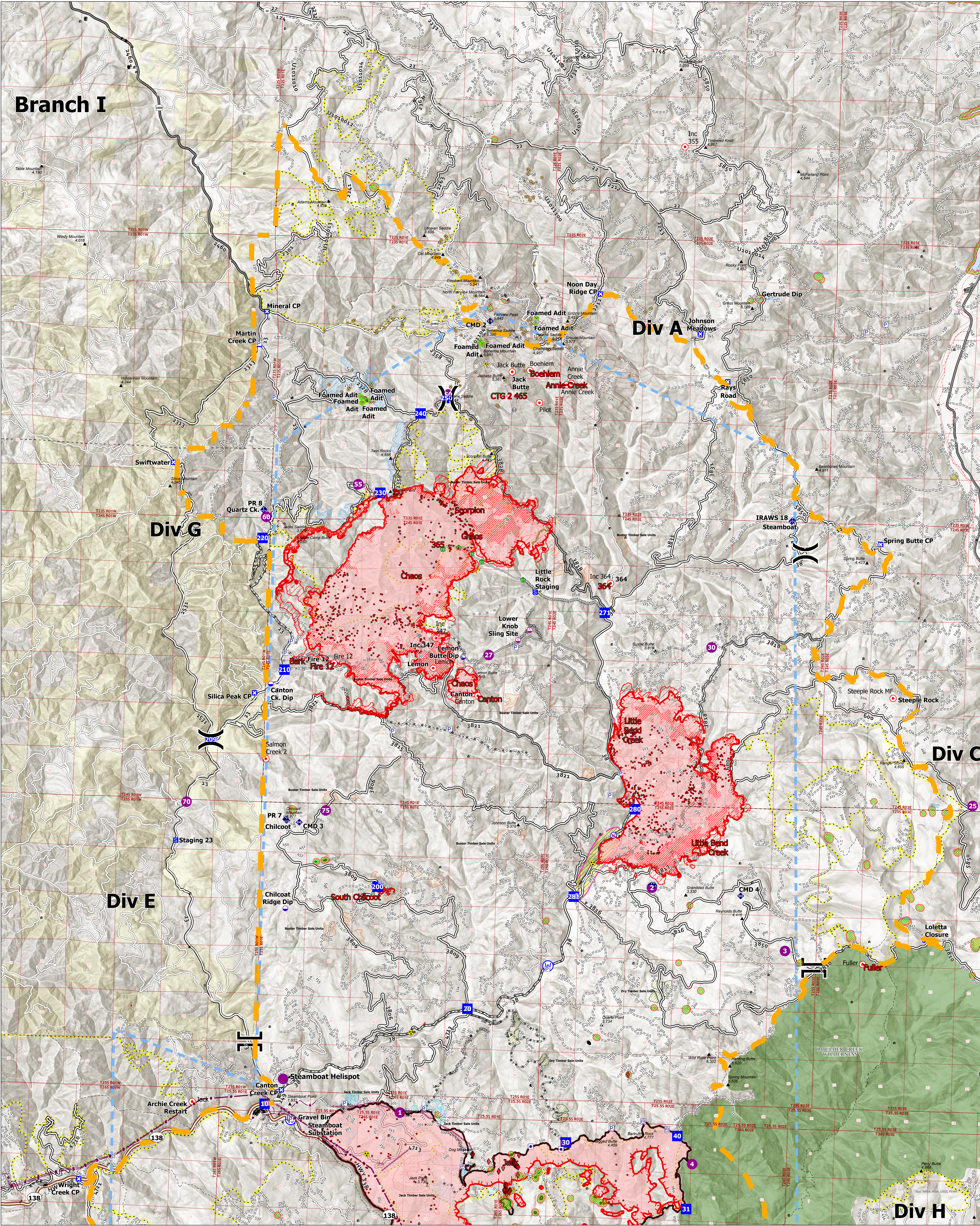
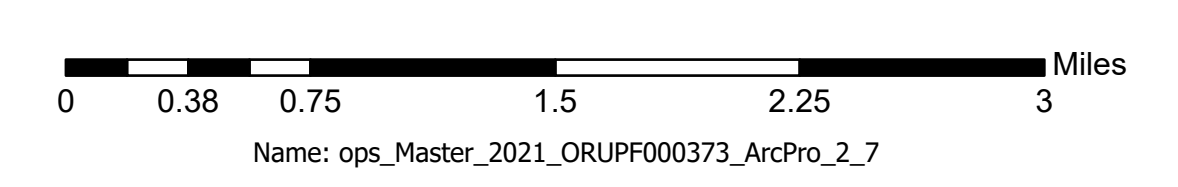


Branch I



Jack Fire: 23,753Ac
Rough Patch Complex: 19,369Ac



County Boundary	Staging Area	Water Development or Draft Site	Planned Dzer Line	Contained Line	Dirt (Not Paved)	Summit	Call Timber Sale
Jackson County Structures	Drop Point	Mobile Weather Unit	Planned Mixed Construction Line	Wildfire Daily Fire Perimeter	Primary Hwy	Township	Sullivan Project Area
Klamath County Structures	Repeater	Repeater	Planned Road as Line	IR Heat Perimeter	Airfield	Lake / Pond	Drifter Timber Sale
Lane County Structures	Hazard	Water Source	Access or Improved Road	IR Intense Heat	Gravel Road	Roadless Areas	Roadless Areas
Area To Protect (points)	Hot Spot - Spot Fire	Restricted Water Source	Repair Line	IR Scattered Heat	Dirt Road	Area To Protect (polygons)	Wilderness
Utility Power Lines	Value at Risk	Retarded Drop	Retarded Drop	IR Isolated Heat Source	Unimproved Roads	Area To Protect (polygons)	BLM
Aerial Fire Retardant Avoidance Areas	Dry Site	Completed Hand Line	Completed Hand Line	Area Closure	Closed Roads	Jack Timber Sale	Private
Other	Landmark	Completed Road as Line	Completed Road as Line	Jack Timber Sale	Dry Timber Adits	Jack Timber Sale	Private
				Fire Edge	National Designated Trail	CC Alternative Units	