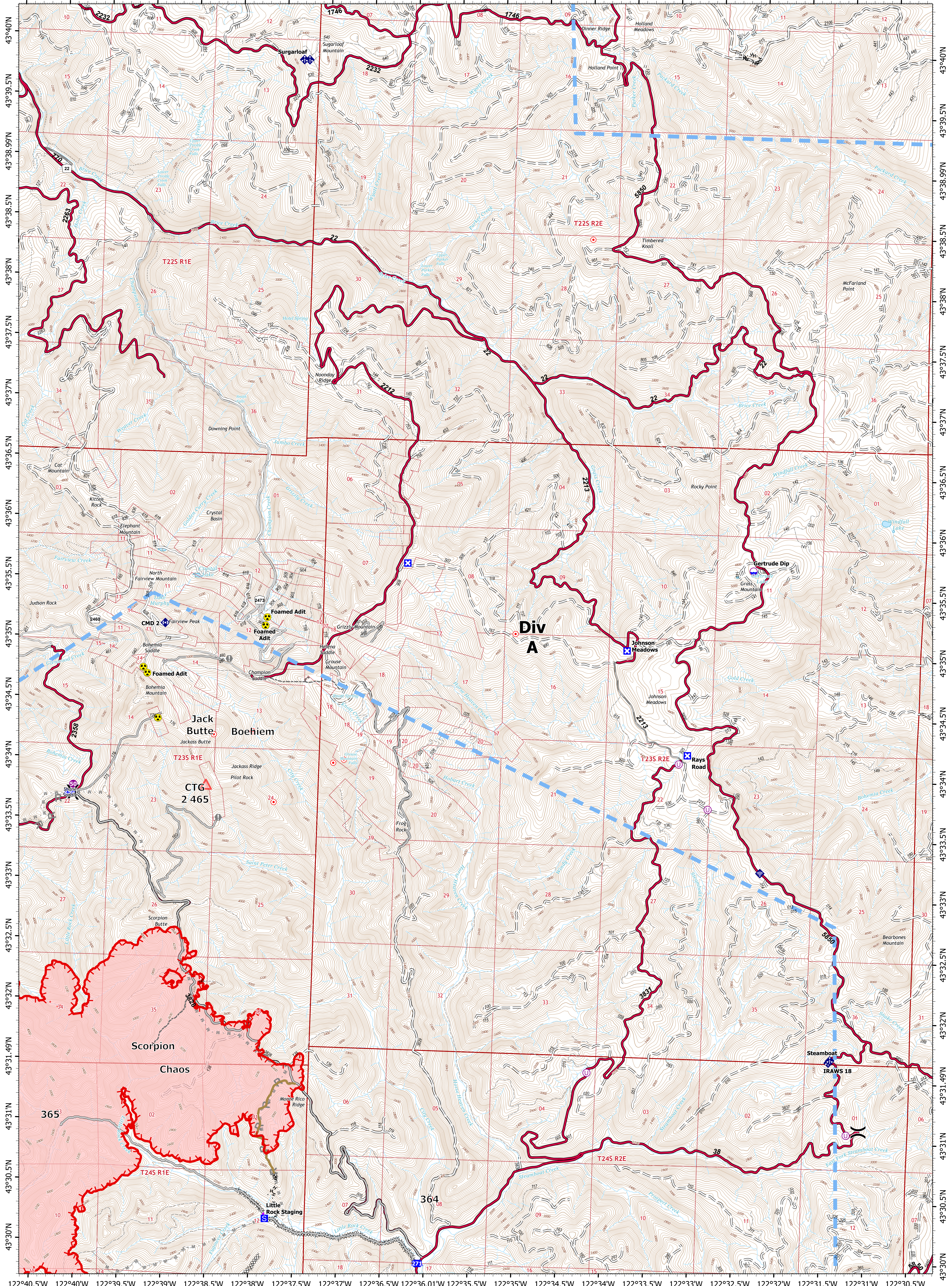
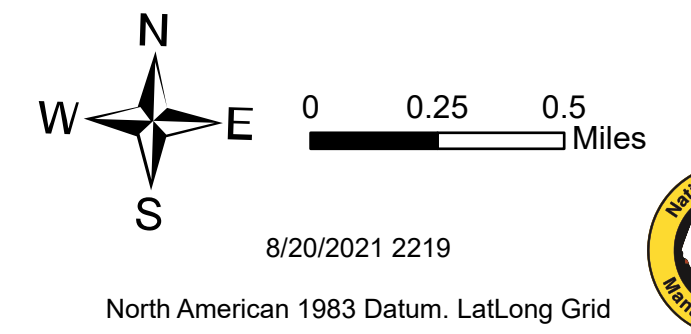
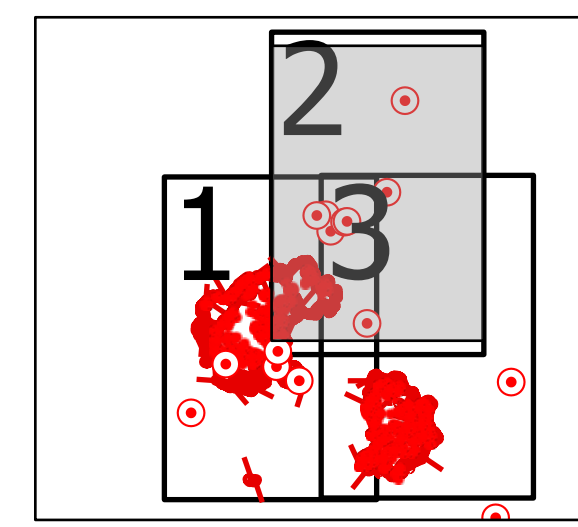


IAP Map

Rough Patch Complex
OR-UPF-000373
08/21/2021 - 24hr

19,405 acres at 08/21/2021

- Dip Site
- HeliSpot
- Unimproved Landing Area
- Division Break
- Drop Point
- Closure
- Staging Area
- Hot Spot - Spot Fire
- Value at Risk
- Mobile Weather Unit
- Internet Access
- Repeater
- Hazard
- Completed Dozer Line
- Completed Hand Line
- Completed Road as Line
- Planned Mixed Construction Line
- Planned Road as Line
- Access or Improved Road
- Other
- Repair Line
- Route
- Temporary Flight Restriction
- Fire Edge
- Wildfire Daily Fire Perimeter
- ARTERIAL
- Dirt (Not Paved)
- Local Road
- 4WD
- Trail
- Township/Range
- Section
- Perennial Stream
- Intermittent Stream
- 200 ft Contours
- 40 ft Contours

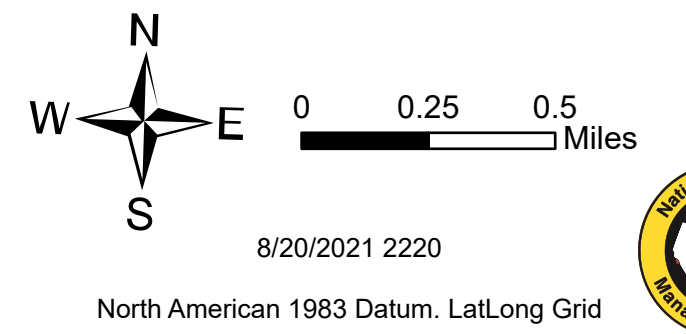
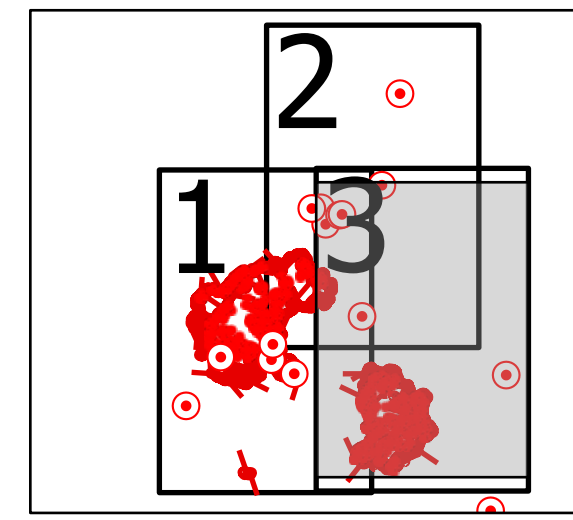


IAP Map

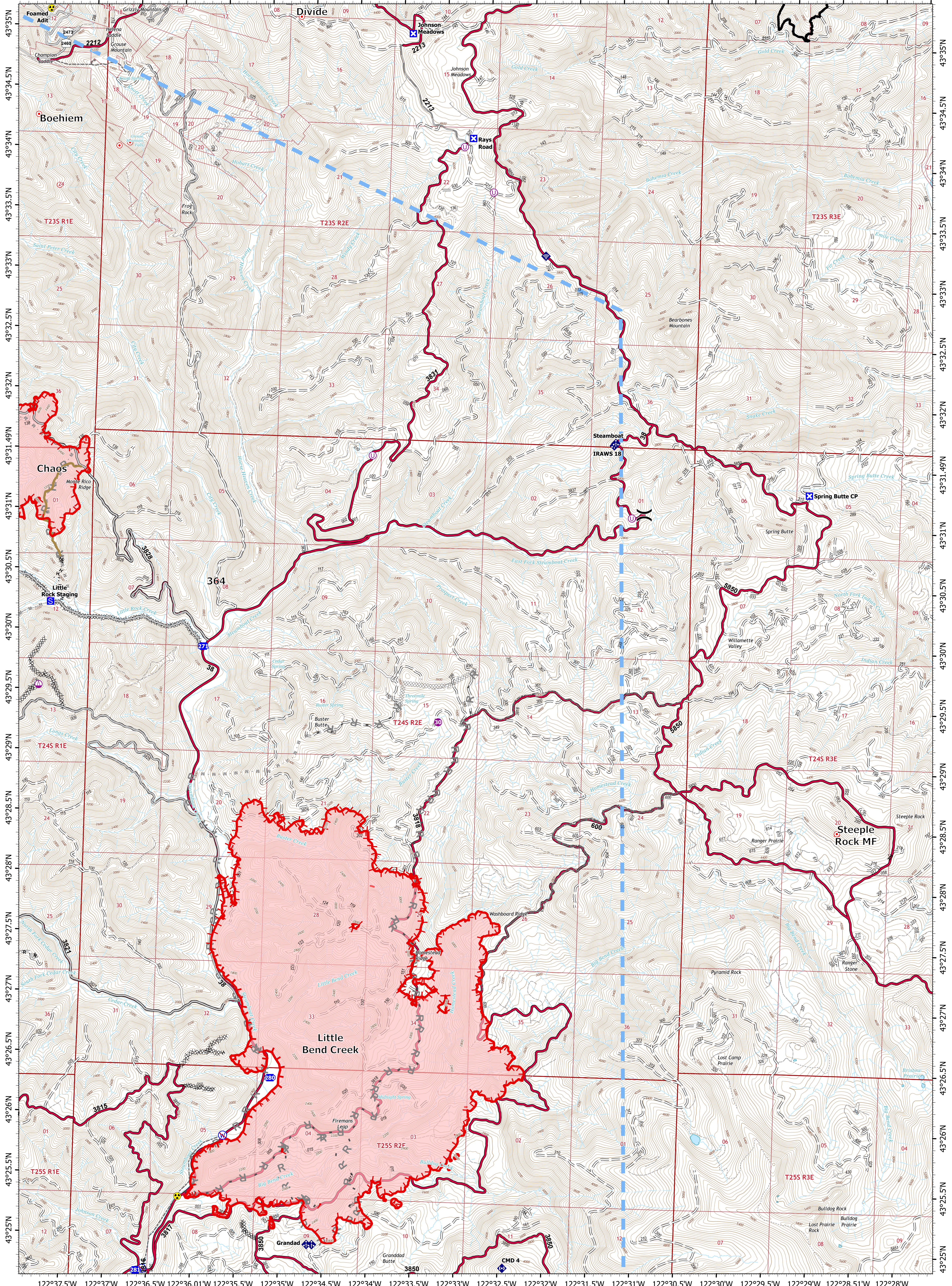
Rough Patch Complex
OR-UPF-000373
08/21/2021 - 24hr

19,405 acres at 08/21/2021

- Helispot
- Sling Site
- Unimproved Landing Area
- Division Break
- Drop Point
- Closure
- Staging Area
- Hot Spot - Spot Fire
- Value at Risk
- Mobile Weather Unit
- Internet Access
- Repeater
- Hazard
- Restricted Water Source
- Completed Dozer Line
- Completed Hand Line
- Completed Road as Line
- Planned Dozer Line
- Planned Hand Line
- Planned Mixed Construction Line
- Planned Road as Line
- Access or Improved Road
- Trail
- Repair Line
- Route
- Temporary Flight Restriction
- Fire Edge
- Contained Line
- Wildfire Daily Fire Perimeter
- ARTERIAL
- Dirt (Not Paved)
- Local Road
- 4WD
- Trail
- Township/Range
- Section
- Perennial Stream
- Intermittent Stream
- 200 ft Contours
- 40 ft Contours
- Perennial Lake



8/20/2021 2220
North American 1983 Datum, Lat/Long Grid



122°37.5'W 122°37'W 122°36.5'W 122°36.01'W 122°35.5'W 122°35'W 122°34.5'W 122°34'W 122°33.5'W 122°33'W 122°32.5'W 122°32'W 122°31.5'W 122°31'W 122°30.5'W 122°30'W 122°29.5'W 122°29'W 122°28.5'W 122°28'W