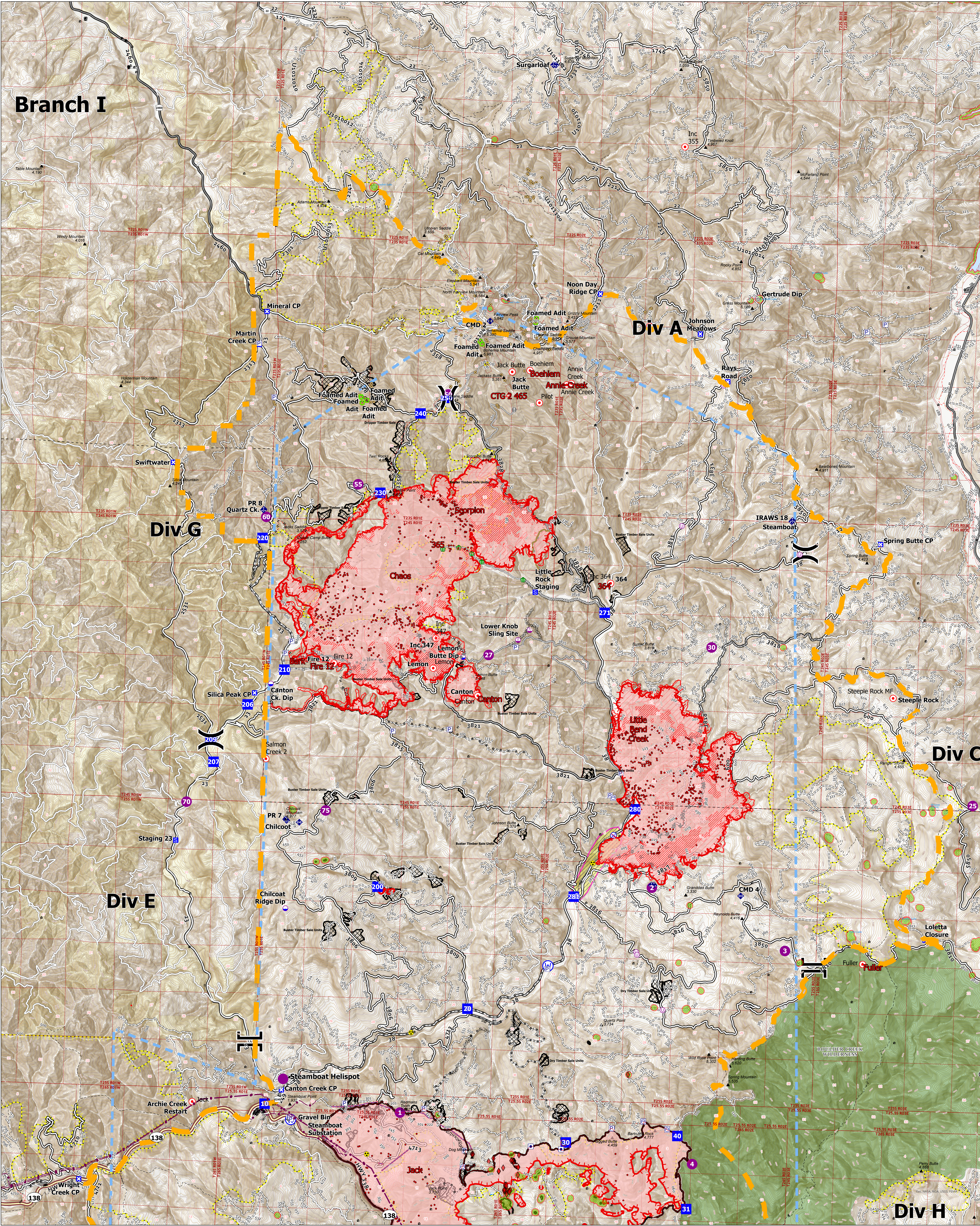
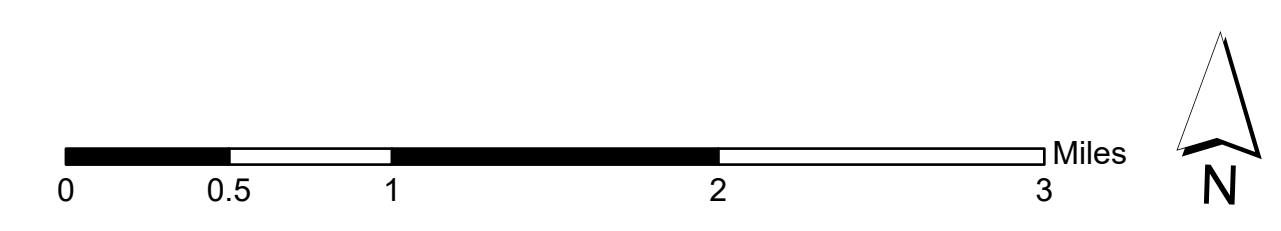


# Branch I



Jack Fire: 23,755ac  
 Rough Patch Complex: 20,778ac

**Operations North**  
 08/21/2021



County Boundary	Structure	Water Development or Draft Site	Planned Hand Line	IR Heat Perimeter	Primary Hwy
Jackson County Structures	Unimproved Landing Area	Stream Crossing	Planned Head Construction Line	IR Intense Heat	Aerial
Lane County Structures	Division Break	Mobile Weather Unit	Planned Road as Line	IR Scattered Heat	Paved Road
Area To Protect (points)	Drop Point	Repeater	Access or Improved Road	IR Isolated Heat Source	Gravel Road
Utility Power Lines	Staging Area	Hazard	Other	Area Closure	Dirt Roads
Aerial Fire Retardant Avoidance Areas	Dip Site	Water Source	Regular Line	Foamed Ads Closures	Unimproved Roads
Dip Site	Helispot	Restricted Water Source	Resturant Drop	Unique HF Master Ads	Closed Roads
Value at Risk	Landmark	Completed Doser Line	Temporary Flight Restriction	Timber Sale	Trail
Other		H - Completed Hand Line	Fire Edge	National Designated Trail	Private
Planned Doser Line		R - Completed Road as Line	Wildfire Daily Fire Perimeter		Summit
					Township

GB IMT 2  
 8/21/2021 06:09  
 North American 1983 Datum  
 LatLong Grid