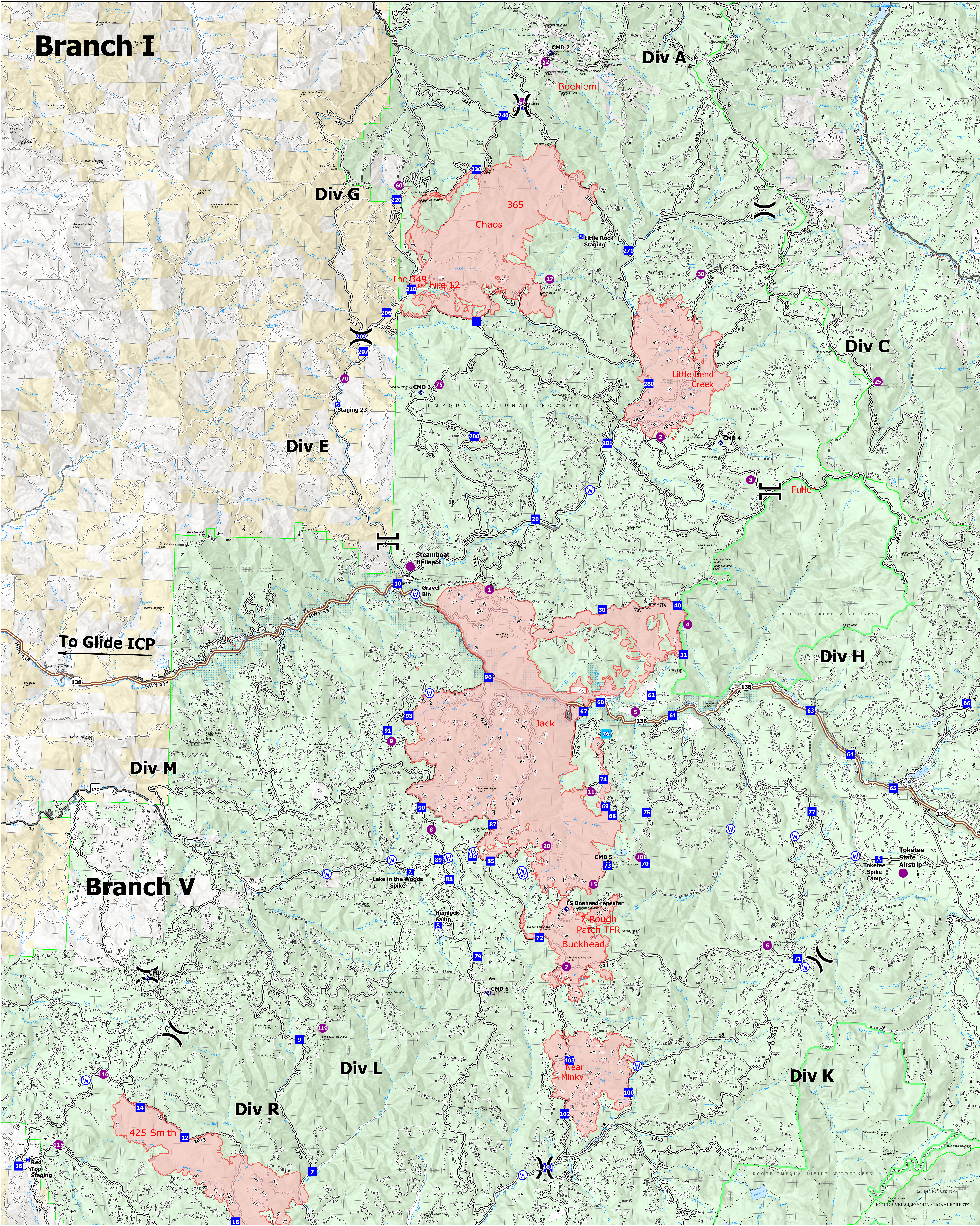


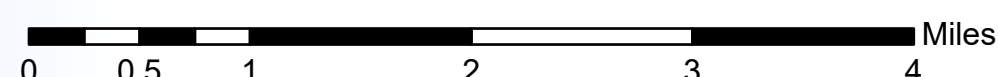
Branch I



Transportation Rough Patch

Jack Fire: 23,768 Ac
 Rough Patch Complex: 22,268 Ac

08/23/2021



- | | | | |
|------------------|---------------------------------|--------------------|------------------------------|
| ● Helispot | Ⓢ Staging Area | — Paved Road | — Administrative FS Boundary |
|) Division Break | Ⓡ Repeater | — Gravel Road | — Forest Service Land |
| Branch Break | Ⓜ Water Source | — Dirt Roads | — Paved Road |
| ■ Drop Point | Ⓦ Wildfire Daily Fire Perimeter | — Unimproved Roads | — Gravel Road |
| ⓧ Camp | — Forest Service Land | — Closed Roads | — Dirt Roads |