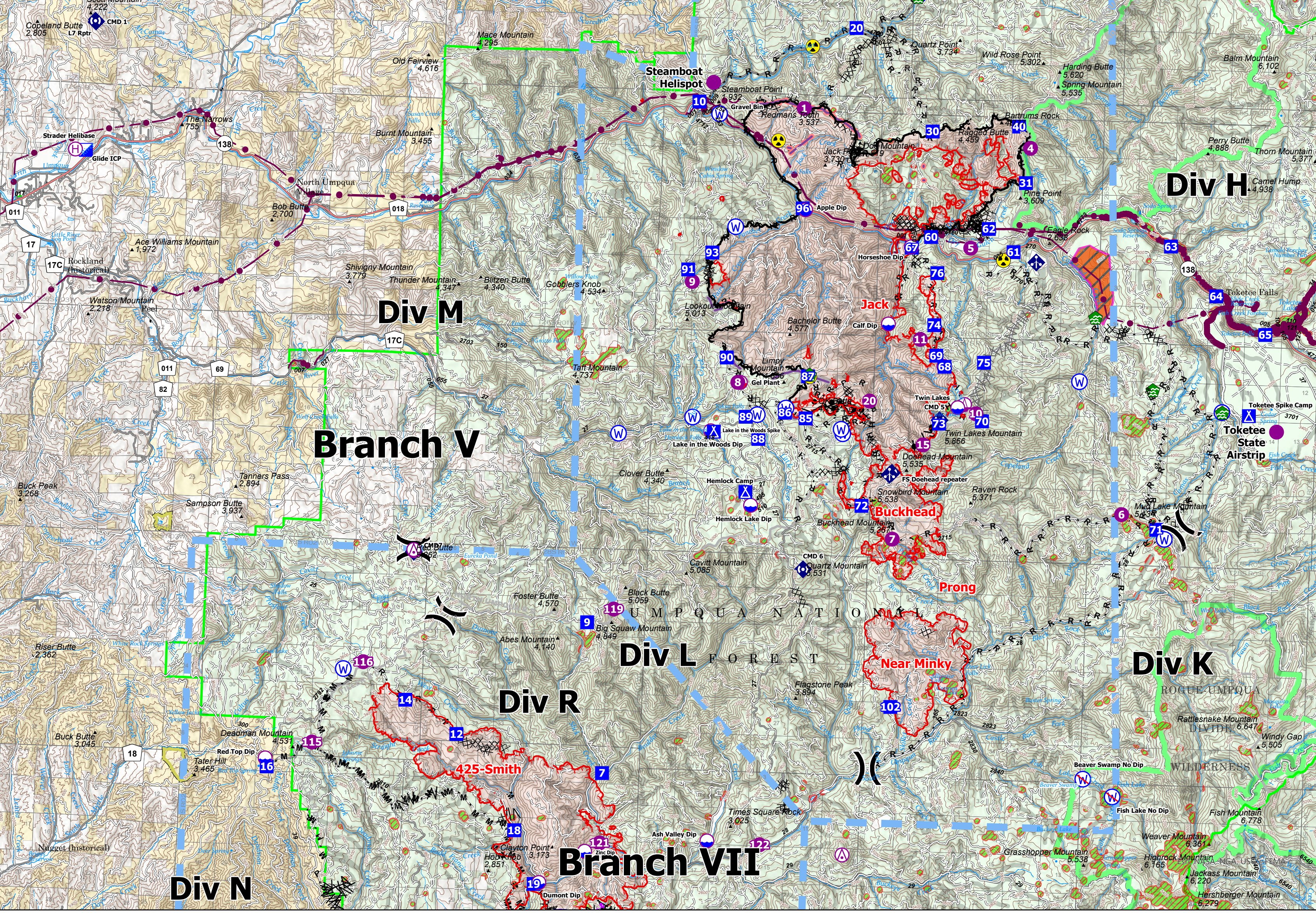
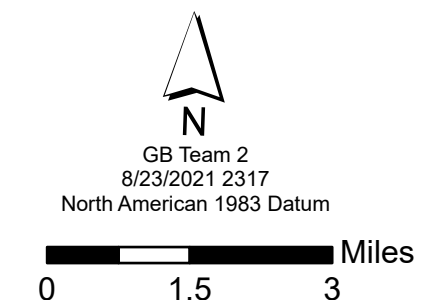


FC Point Type	Label	Comments	Latitude WGS84 DDM	Longitude WGS84 DDM
Dip Site	Twin Lakes	Twin Lakes, approved	43° 13.742' N	122° 35.522' W
Dip Site	Hemlock Lake Dip	Hemlock Lake, approved	43° 11.285' N	122° 42.083' W
Dip Site	Lake in the Woods Dip	Lake in the Woods, approved	43° 13.008' N	122° 43.446' W
Dip Site	Calf Dip		43° 15.660' N	122° 37.841' W
Dip Site	Horseshoe Dip	Calf Dip	43° 17.494' N	122° 37.189' W
Dip Site	Apple Dip	Apple Dip	43° 18.282' N	122° 40.630' W
Dip Site	Loletta Dip		43° 23.950' N	122° 26.001' W
Dip Site	Lemon Butte Dip		43° 29.000' N	122° 39.584' W
Dip Site	Gertrude Dip		43° 35.717' N	122° 32.484' W
Dip Site	Chicoat Ridge Dip	No Tank	43° 24.317' N	122° 43.818' W
Dip Site			43° 13.602' N	122° 41.051' W
Dip Site	Martin Dip		43° 31.436' N	122° 44.627' W
Dip Site	Canton Ck. Dip		43° 28.400' N	122° 44.370' W
Helibase	Strader Helibase		43° 19.100' N	122° 04.230' W
Helispot	Steamboat Helispot	T1, T2, T3 approved	43° 21.210' N	122° 43.730' W
Helispot	Toketee State Airstrip	T1, T2, T3 approved	43° 13.402' N	122° 25.237' W
Helispot	4	T2, T3, Dust Abatement	43° 19.902' N	122° 33.444' W
Helispot	5	T1, T2, T3 - Private Grass	43° 17.507' N	122° 35.269' W
Helispot	2	H2, T2 approved, RAWs site	43° 24.913' N	122° 34.670' W
Helispot	3	H3, T2 Approved	43° 23.838' N	122° 31.293' W
Helispot	1	H1, T3 approved	43° 20.668' N	122° 40.782' W
Helispot	8	H8, T2 capable, Hower hole.	43° 14.169' N	122° 42.626' W
Helispot	7	H6, T2 approved	43° 11.348' N	122° 30.142' W
Helispot	11	H-7, T3 approved	43° 10.600' N	122° 37.493' W
Helispot	11	H-11, T3	43° 15.322' N	122° 36.788' W
Helispot	15	H-15, T3	43° 13.842' N	122° 36.600' W
Helispot	20	only T-3 approved, needs	43° 13.833' N	122° 38.367' W
Helispot	9	only T-3 approved, 1 way	43° 16.505' N	122° 44.204' W
Helispot	10	Approved for T-3, by Air	43° 13.612' N	122° 34.934' W
Helispot	60	Needs approval- r/nart,	43° 31.436' N	122° 44.627' W
Helispot	70	Needs approval	43° 26.199' N	122° 46.380' W
Helispot	75	Approved by AOB/Markason	43° 26.125' N	122° 42.891' W
Helispot	30	Approved by AOB/Markason	43° 29.324' N	122° 33.968' W
Helispot	25	Slight slope down toward	43° 26.584' N	122° 26.710' W
Helispot	27		43° 29.055' N	122° 38.944' W
Helispot	50		43° 33.775' N	122° 40.171' W
Helispot	52		43° 34.895' N	122° 39.357' W
Mobile Retardant Base	Gel Plant	2 fold a tanks present, 1	43° 14.170' N	122° 42.546' W
Restricted Water Source			43° 25.845' N	122° 35.673' W
Restricted Water Source			43° 24.719' N	122° 36.542' W
Restricted Water Source	Beaver Hole		43° 26.965' N	122° 45.653' W
Restricted Water Source	5 Mile Hole		43° 24.344' N	122° 46.253' W
Restricted Water Source	Canton Falls		43° 22.181' N	122° 44.755' W
Sling Site		utilize hardpack, away from	43° 14.706' N	122° 36.013' W
Sling Site			43° 13.823' N	122° 35.307' W
Sling Site	Lower Knob Sling Site		43° 29.345' N	122° 38.218' W
Sling Site			43° 29.534' N	122° 37.934' W
Water Development or Draft		Good water source with	43° 13.819' N	122° 27.002' W
Water Development or Draft		Pond, potential fill site, likely	43° 14.298' N	122° 29.259' W
Water Development or Draft		Man made water source.	43° 14.404' N	122° 40.326' W
Water Development or Draft		Potential tender fill site, load	43° 15.963' N	122° 31.178' W
Water Development or Draft		Needs 5-10 tons of gravel	43° 23.378' N	122° 37.225' W
Water Development or Draft		120' re-opened draft site that	43° 28.964' N	122° 44.045' W
Water Development or Draft		Would support tender fill-	43° 10.654' N	122° 41.047' W
Water Source	Gravel Bin	Draft site at gravel bin raft	43° 20.475' N	122° 43.507' W
Water Source		water source #W3721; use	43° 13.424' N	122° 41.967' W
Water Source		#W2505 developed water	43° 13.602' N	122° 41.051' W
Water Source		#W2301; roadside	43° 17.830' N	122° 42.866' W
Water Source		#W3717 good water flow,	43° 13.319' N	122° 44.045' W
Water Source		tender fill site on 38rd	43° 23.428' N	122° 37.205' W
Water Source		#W3709, pump sites: good	43° 12.877' N	122° 46.412' W
Water Source		access/good flow. Added		
Water Source		boom, backed off creek,		
Water Source			43° 13.042' N	122° 39.196' W
Water Source			43° 13.146' N	122° 39.252' W
Water Source			43° 14.446' N	122° 31.630' W
Water Source		Good water source	43° 10.798' N	122° 28.744' W
Water Source		Good back-in water source	43° 13.783' N	122° 26.870' W
Water Source			43° 14.308' N	122° 29.257' W
Water Source			43° 08.004' N	122° 34.768' W
Water Source			43° 04.966' N	122° 38.847' W



Pilot
 Jack Fire: 23,787
 Rough Patch Complex: 23,646
 08/24/2021



- ⊙ Aerial Hazard
 - ⊙ Dip Site
 - ⊙ Mobile Retardant Base
 - ⊙ Helispot
 - ⊙ Helibase
 - ⊙ Sling Site
 - ⊙ Division Break
 - ⊙ Incident Command Post
 - ⊙ Drop Point
 - ⊙ Camp
- ⊙ Water Development or Draft Site
 - ⊙ Mobile Weather Unit
 - ⊙ Repeater
 - ⊙ Hazard
 - ⊙ Water Source
 - ⊙ Restricted Water Source
 - ⊙ Completed Burnout
 - ⊙ Completed Dozer Line
 - ⊙ Completed Fuel Break
 - ⊙ Completed Hand Line
- M - Completed Mixed Construction Line
 - R - Completed Road as Line
 - Planned Fuel Break
 - H - Planned Hand Line
 - M - Planned Mixed Construction Line
 - R - Planned Road as Line
 - Foam Drop
 - Retardant Drop
 - Route
- Temporary Flight Restriction
 - Fire Edge
 - Contained Line
 - Sensitive Areas
 - Utility Power Lines
 - TECPS Aerial Fire Retardant Avoidance
 - Dripper Timber Sale (Helicopter Logging)
 - Aquatic Areal Fire Retardant Avoidance