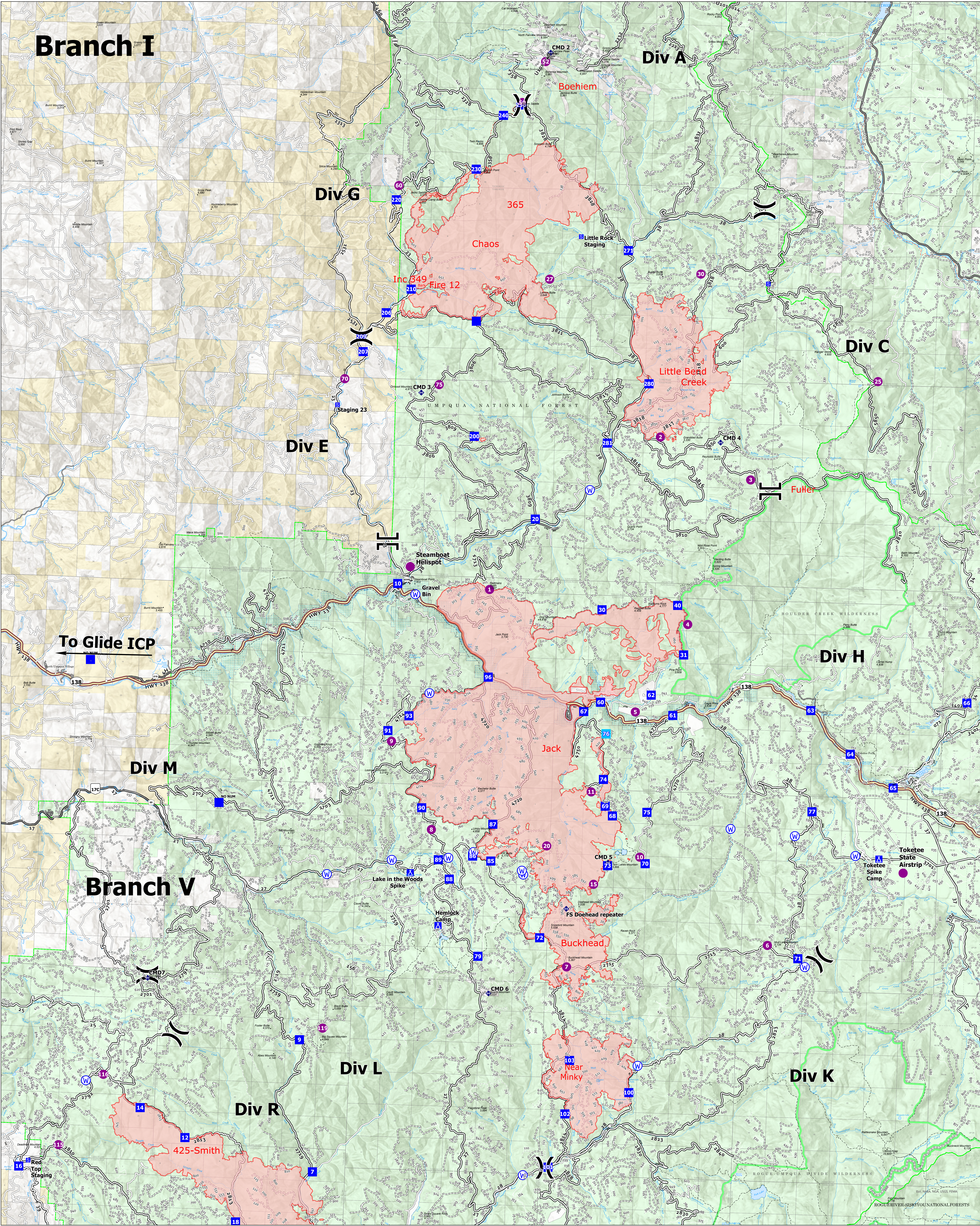


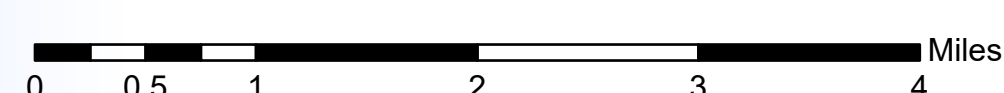
# Branch I



## Transportation Rough Patch

Jack Fire: 23,787 Ac  
 Rough Patch Complex: 23,646 Ac

08/24/2021



- |                  |                                 |                    |                              |
|------------------|---------------------------------|--------------------|------------------------------|
| ● Helispot       | Ⓢ Staging Area                  | — Paved Road       | — Administrative FS Boundary |
| ) Division Break | Ⓡ Repeater                      | — Gravel Road      | — Forest Service Land        |
| Branch Break     | Ⓜ Water Source                  | — Dirt Roads       | — Paved Road                 |
| ■ Drop Point     | Ⓦ Wildfire Daily Fire Perimeter | — Unimproved Roads | — Gravel Road                |
| ⓧ Camp           | — Forest Service Land           | — Closed Roads     | — Dirt Roads                 |