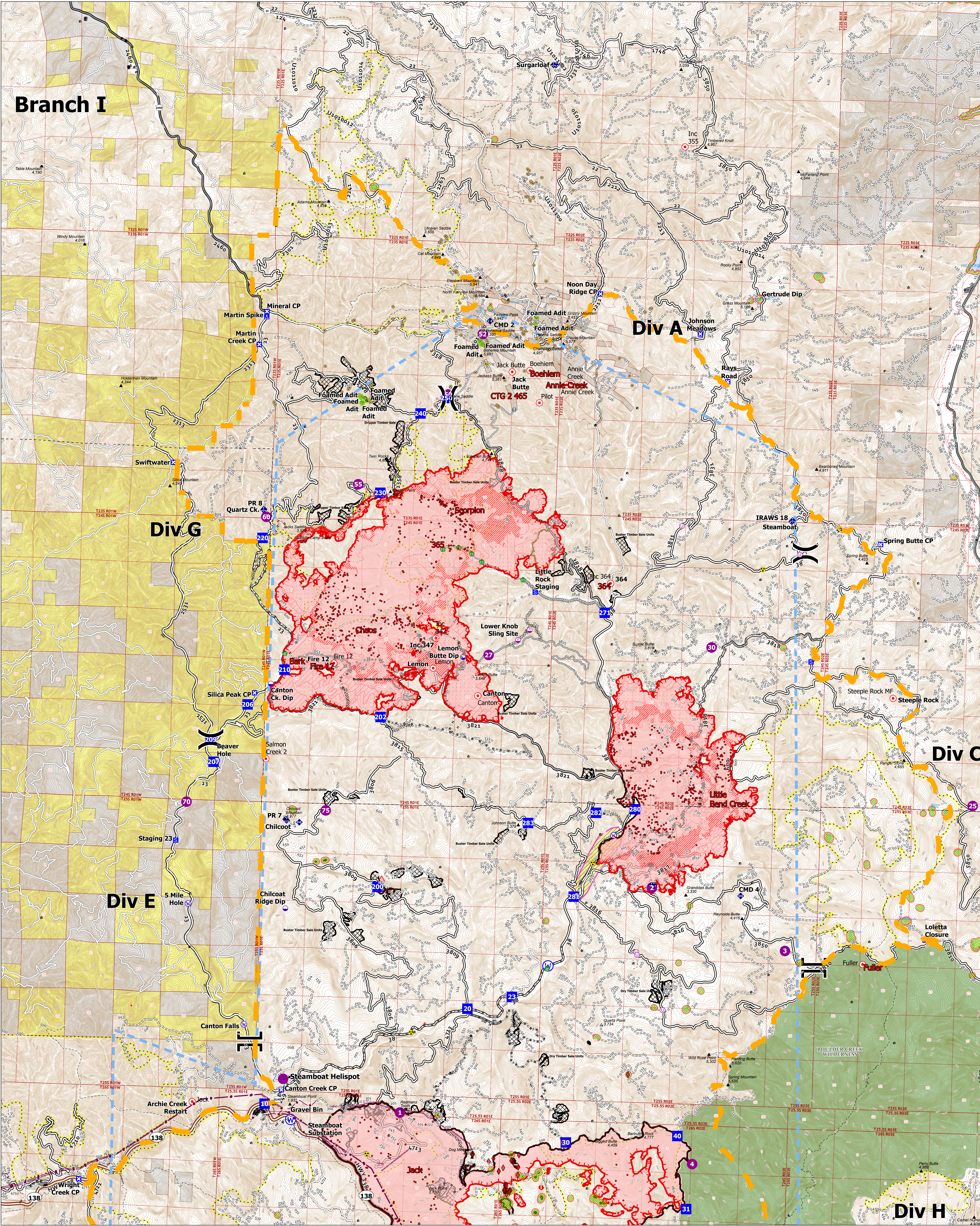


# Branch I



## Operations North

08/25/2021



Jack Fire: 23,802ac  
Rough Patch Complex: 24,670ac



- Structures
- Area To Protect (points)
- Utility Power Lines
- Dip Site
- Helispot
- Sling Site
- Unimproved Landing Area
- Division Break
- Branch Break
- Drop Point
- Closure
- Camp
- Staging Area
- Hot Spot / Soft Fire
- Value at Risk
- Other
- Landmark
- Water Development or Draft Site
- Stream Crossing
- Mobile Weather Unit
- Repeater
- Hazard
- Water Source
- Restricted Water Source
- Completed Dozer Line
- Planned Dozer Line
- Completed Hand Line
- Planned Hand Line
- Mixed Constructo Line
- Completed Constructo Line
- Planned Constructo Line
- Completed Road as Line
- Planned Road as Line
- Flight Restriction
- Access or Improved Road
- Other
- Repair Line
- Retardant Drop
- Temporary Road
- Fire Edge
- Contained Line
- Daily Fire Perimeter
- IR Heat Perimeter
- IR Intense Heat
- Scattered IR
- IR Isolated Heat Source
- Umpqua NF Master Adits
- Timber Sales
- Sensitive Areas
- Area To Protect (polygon)
- Adit Closures
- Aerial Fire Retardant Avoidance Areas
- Wildfire Source
- Wilderness
- BLM
- Private