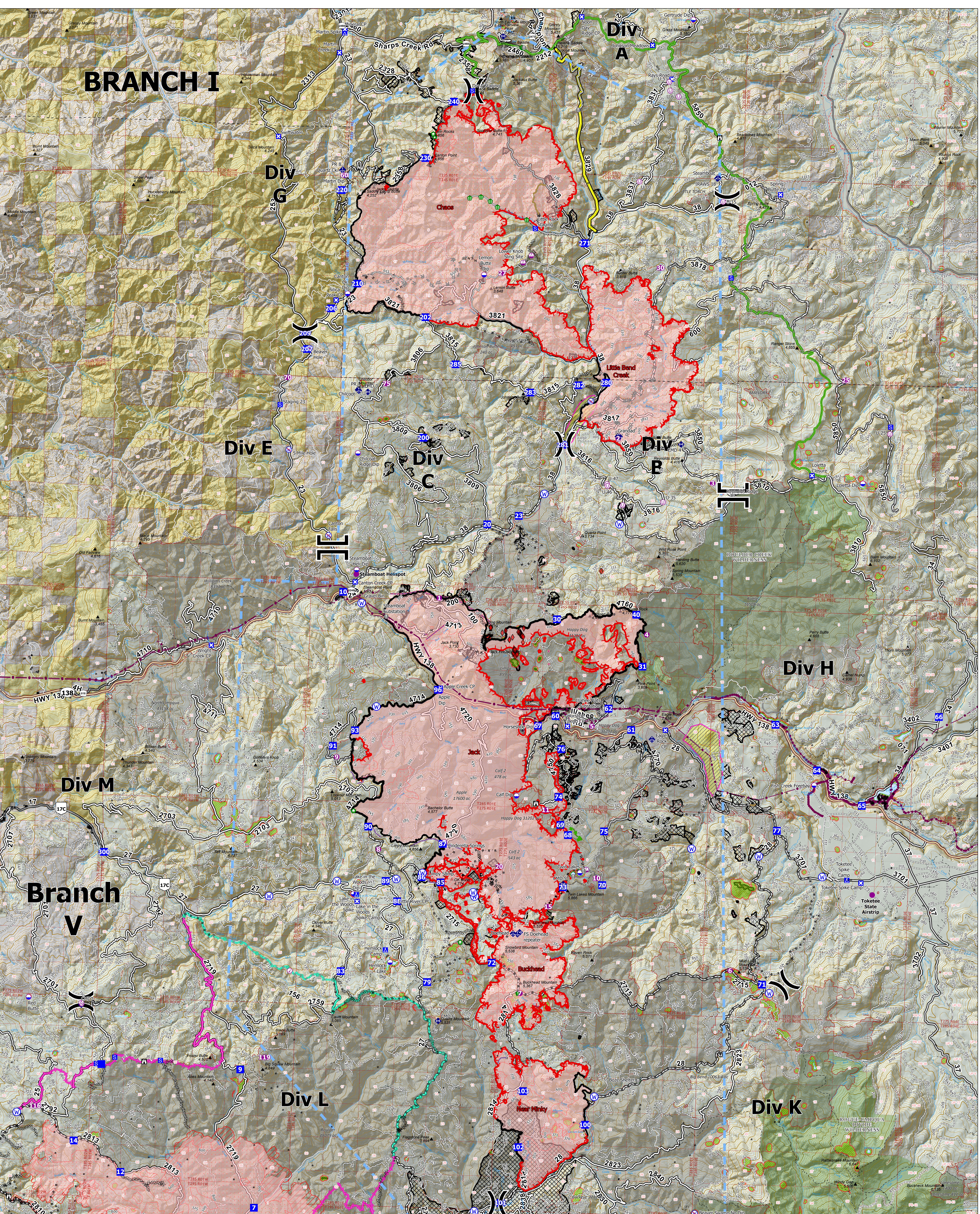
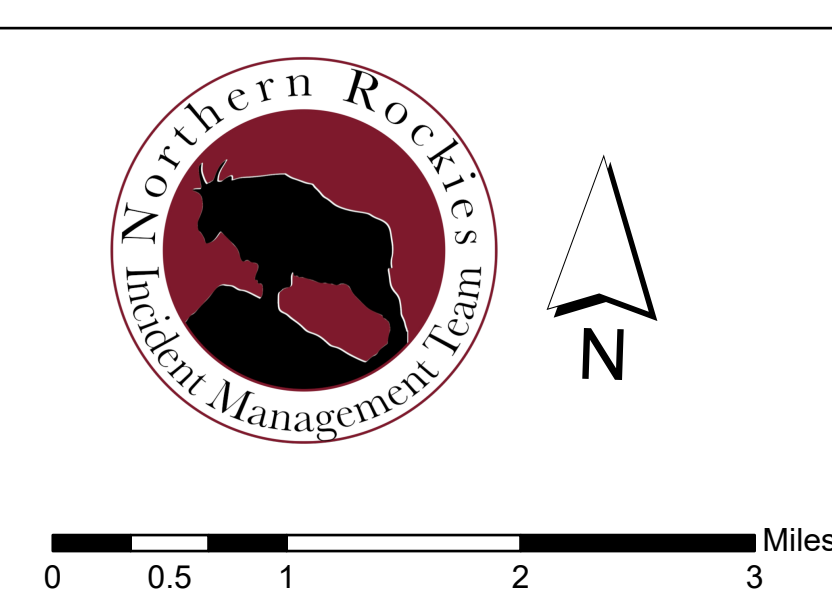


BRANCH I



Operations Overview

Jack Fire: 23,985 ac
 Rough Patch Complex: 35,054 ac
 September 01, 2021



- | | | | | | | | |
|--|--|--|--|--|---|--|--|
| <ul style="list-style-type: none"> ○ Aerial Hazard □ Check Point (RB) ○ Dip Site ○ Helispot ○ Sling Site ○ Unimproved Landing Area ⊥ Branch Break ⊥ Division Break ■ Drop Point | <ul style="list-style-type: none"> ⊥ Closure ⊥ Camp ⊥ Staging Area ⊥ Lookout ⊥ Value at Risk ⊥ Structure Wrap ⊥ Stream Crossing ⊥ Resource Location ⊥ Hazard Tree | <ul style="list-style-type: none"> ⊥ Mobile Weather Unit ⊥ Repeater ⊥ Water Source ⊥ Restricted Water Source ⊥ County Boundary ⊥ Structures ⊥ Lane County Structures ⊥ Area To Protect (points) ⊥ Utility Power Lines | <ul style="list-style-type: none"> ▭ Aerial Fire Retardant Avoidance Areas ▭ Completed Burnout ▭ Completed Dozer Line ▭ Completed Hand Line ▭ Completed Mixed Construction Line ▭ Completed Road as Line ▭ Completed Dozer as Line ▭ Planned Fuel Break ▭ Planned Hand Line | <ul style="list-style-type: none"> ▭ Planned Mixed Construction Line ▭ Planned Road as Line ▭ Access or Improved Road ▭ Repair Line ▭ Escape Route ▭ Foam Drop ▭ Retardant Drop ▭ Temporary Flight Restriction | <ul style="list-style-type: none"> ▭ Fire Edge ▭ Contained Line ▭ Wildfire Daily Fire Perimeter ▭ IR Isolated Heat Source ▭ IR Intense Heat ▭ IR Scattered Heat ▭ Sensitive Areas ▭ Area To Protect (polygon) ▭ Timber Sales | <ul style="list-style-type: none"> ▭ Fire History (20yr) ▭ Wilderness ▭ Land Ownership ▭ BLM ▭ Private ▭ Forest Service Land | <ul style="list-style-type: none"> ▭ Primary ▭ Alternate ▭ Contingency ▭ Emergency ▭ FL Red ▭ NR IMT 1 |
|--|--|--|--|--|---|--|--|