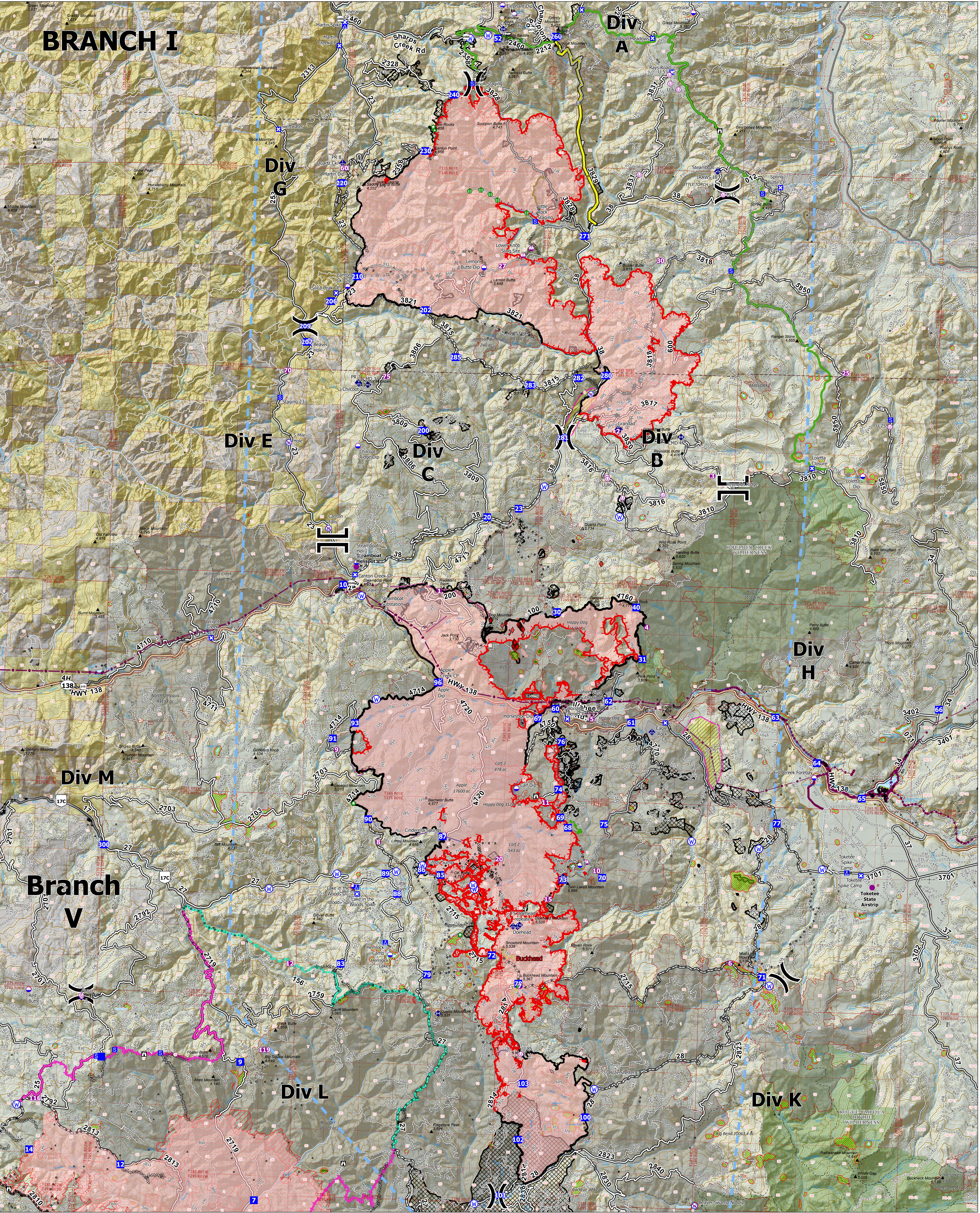
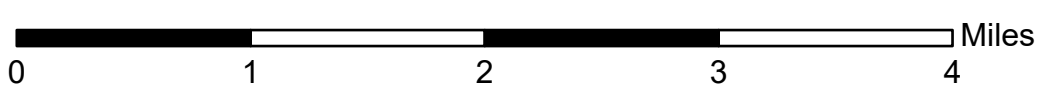


BRANCH I



Operations Overview

Jack Fire: 23,987 ac
 Rough Patch Complex: 37,463 ac
 September 03, 2021



- | |
|---|
| <ul style="list-style-type: none"> ○ Aerial Hazard ○ Dip Site ● Helispot ○ Sling Site ○ Unimproved Landing Area II Branch Break II Division Break ■ Drop Point ■ Closure ■ Camp ■ Staging Area ■ Lookout ○ Value at Risk ○ Structure Wrap ○ Stream Crossing ○ Resource Location ○ Hazard Tree ◆ Mobile Weather Unit ◆ Repeater ○ Water Source ○ Restricted Water Source ○ County Boundary ○ Structures ○ Lane County Structures ◆ Area To Protect (points) ○ Utility Power Lines ○ Aerial Fire Retardant Avoidance Areas ■ Completed Burnout ■ Completed Dozer Line ■ Completed Fuel Break ■ Completed Hand Line ■ Completed Mixed Construction Line ■ Completed Road as Line ■ Planned Dozer Line ■ Planned Fuel Break ■ Planned Hand Line ■ Planned Mixed Construction Line ■ Planned Road as Line ■ Access or Improved Road ■ Other ■ Repair Line ■ Escape Route ■ Foam Drop ■ Retardant Drop ■ Temporary Flight Restriction ■ Fire Edge ■ Contained Line ■ Wildfire Daily Fire Perimeter ■ IR Isolated Heat Source ■ IR Intense Heat ■ IR Scattered Heat ■ Sensitive Areas ■ Area To Protect (polygon) ■ Timber Sales ■ Fire History (20yr) ■ Wilderness ■ BLM ■ Private ■ Forest Service Land ■ PACE Lines ■ Primary ■ Alternate ■ Contingency ■ Emergency ■ Proposed Control Lines ■ FL Red ■ NR IMT 1 |
|---|

Map Data © 2021 Esri