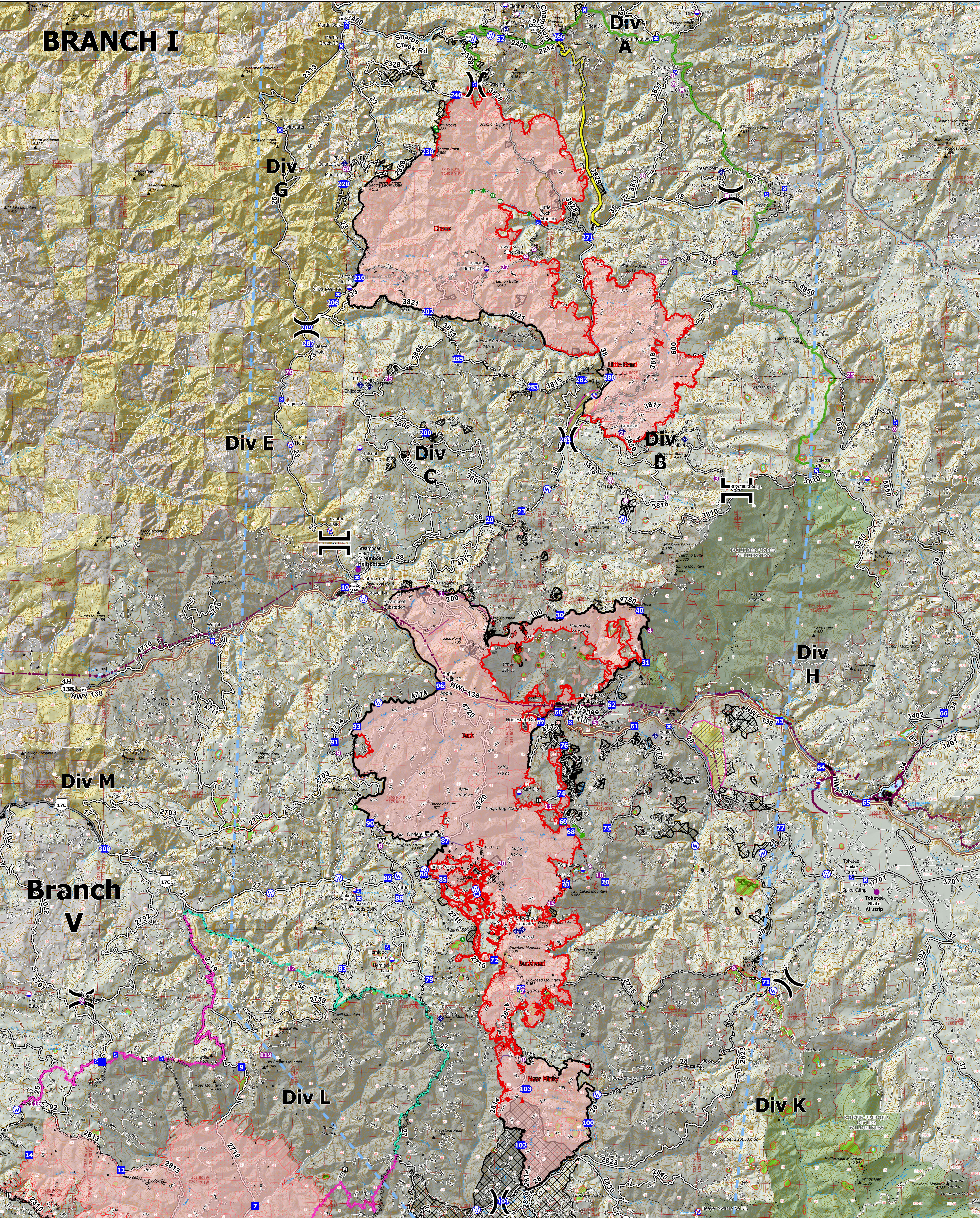
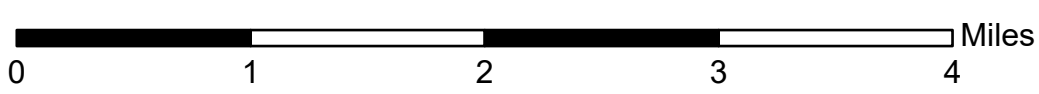


BRANCH I



Operations Overview

Jack Fire: 23,987 ac
 Rough Patch Complex: 37,463 ac
 September 03, 2021



- | | | | |
|---|---|---|--|
| <ul style="list-style-type: none"> ⊙ Aerial Hazard ⊙ Dip Site ⊙ Helispot ⊙ Sling Site ⊙ Unimproved Landing Area ⊙ Branch Break ⊙ Division Break ⊙ Drop Point ⊙ Closure ⊙ Camp ⊙ Staging Area ⊙ Restricted Water Source ⊙ Value at Risk ⊙ Structure Wrap ⊙ Stream Crossing ⊙ Resource Location ⊙ Hazard Tree ⊙ Mobile Weather Unit ⊙ Repeater ⊙ Water Source ⊙ Restricted Water Source ⊙ County Boundary ⊙ Structures ⊙ Lane County Structures ⊙ Area To Protect (points) ⊙ Utility Power Lines ⊙ Aerial Fire Retardant Avoidance Areas | <ul style="list-style-type: none"> ⊙ Completed Burnout ⊙ Completed Dozer Line ⊙ Completed Fuel Break ⊙ Completed Hand Line ⊙ Completed Mixed Construction Line ⊙ Completed Road as Line ⊙ Planned Dozer Line ⊙ Planned Fuel Break ⊙ Planned Hand Line ⊙ Planned Mixed Construction Line ⊙ Planned Road as Line ⊙ Access or Improved Road ⊙ Other ⊙ Repair Line ⊙ Escape Route ⊙ Foam Drop ⊙ Retardant Drop ⊙ Temporary Flight Restriction | <ul style="list-style-type: none"> ⊙ Fire Edge ⊙ Contained Line ⊙ Wildfire Daily Fire Perimeter ⊙ IR Isolated Heat Source ⊙ IR Intense Heat ⊙ IR Scattered Heat ⊙ Sensitive Areas ⊙ Area To Protect (polygon) ⊙ Timber Sales ⊙ Fire History (20yr) ⊙ Wilderness ⊙ BLM ⊙ Private ⊙ Forest Service Land | <ul style="list-style-type: none"> ⊙ PACE Lines ⊙ Primary ⊙ Alternate ⊙ Contingency ⊙ Emergency ⊙ Proposed Control Lines ⊙ FL Red ⊙ NR IMT 1 |
|---|---|---|--|