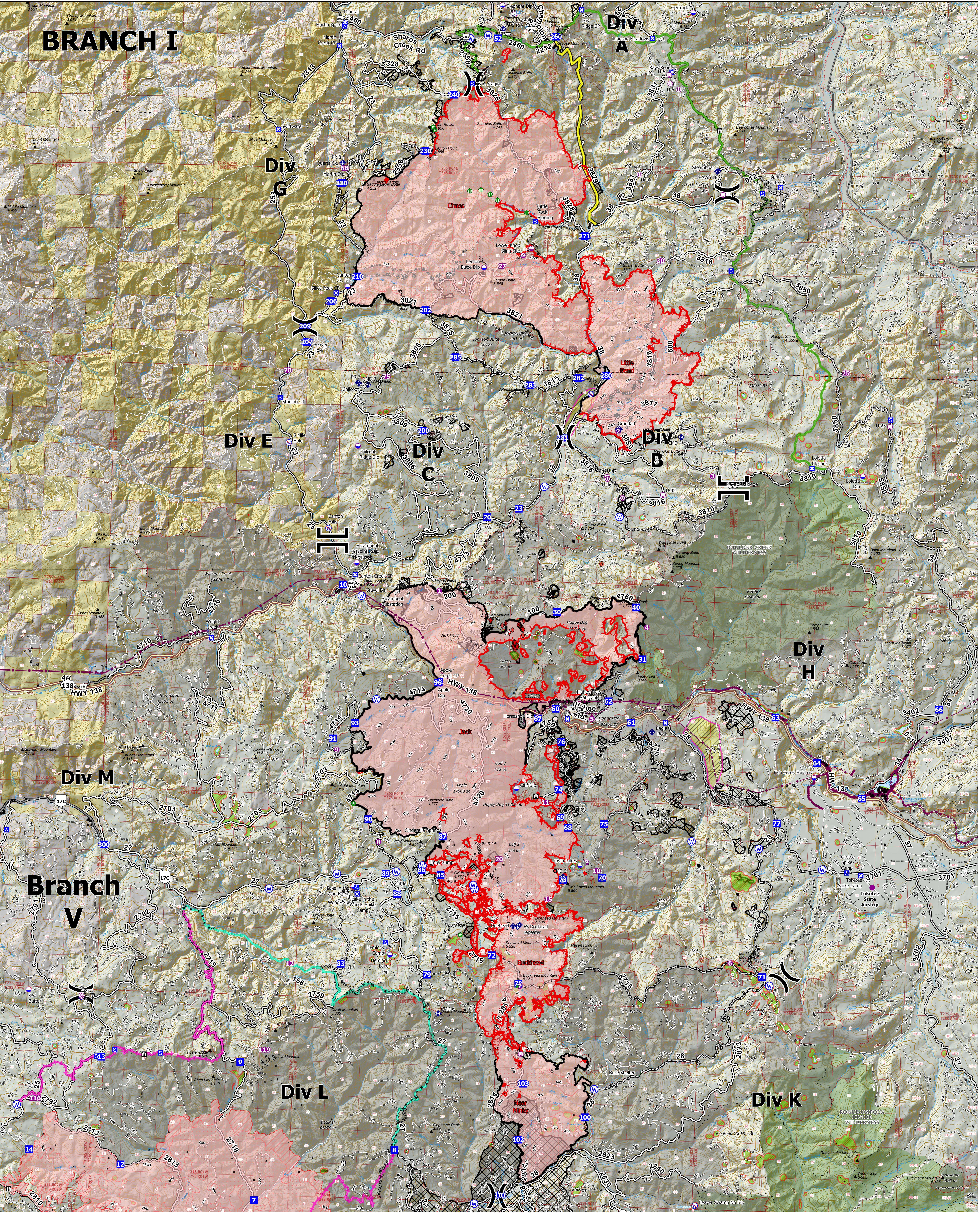
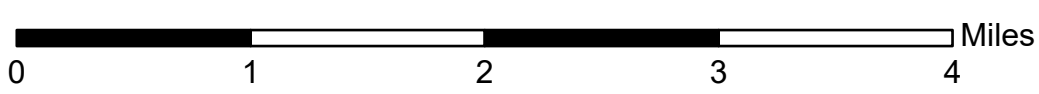


# BRANCH I



## Operations Overview

Jack Fire: 23,987 ac  
 Rough Patch Complex: 39,035 ac  
 September 04, 2021



- |  |  |  |
|--|--|--|
| <ul style="list-style-type: none"> <li>○ Aerial Hazard</li> <li>○ Dip Site</li> <li>○ Helispot</li> <li>○ Sling Site</li> <li>○ Unimproved Landing Area</li> <li>II Branch Break</li> <li>X Division Break</li> <li>● Drop Point</li> <li>■ Closure</li> <li>■ Camp</li> <li>■ Staging Area</li> <li>■ Lookout</li> <li>○ Value at Risk</li> <li>○ Structure Wrap</li> <li>○ Stream Crossing</li> <li>○ Resource Location</li> <li>○ Hazard Tree</li> <li>◆ Mobile Weather Unit</li> <li>◆ Repeater</li> <li>○ Water Source</li> <li>○ Restricted Water Source</li> <li>○ County Boundary</li> <li>○ Structures</li> <li>○ Lane County Structures</li> <li>◆ Area To Protect (points)</li> <li>◆ Utility Power Lines</li> <li>○ Aerial Fire Retardant Avoidance Areas</li> <li>◆ Completed Dozer Line</li> <li>◆ Completed Mixed Construction Line</li> <li>◆ Completed Road as Line</li> <li>◆ Planned Dozer Line</li> <li>◆ Planned Fuel Break</li> <li>◆ Planned Hand Line</li> <li>◆ Planned Mixed Construction Line</li> <li>◆ Planned Road as Line</li> <li>◆ Fire Edge</li> </ul> | <ul style="list-style-type: none"> <li>— Contained Line</li> <li>— Wildfire Daily Fire Perimeter</li> <li>— IR Isolated Heat Source</li> <li>— IR Intense Heat</li> <li>— IR Scattered Heat</li> <li>— Sensitive Areas</li> <li>— Area To Protect (polygon)</li> <li>— Timber Sales</li> <li>— Fire History (20yr)</li> <li>— Wilderness</li> <li>— BLM</li> <li>— Private</li> <li>— Forest Service Land</li> <li>— PACE Lines</li> <li>— Primary</li> <li>— Alternate</li> <li>— Contingency</li> <li>— Emergency</li> </ul> | <ul style="list-style-type: none"> <li>— Proposed Control Lines</li> <li>— FL Red</li> <li>— NR IMT 1</li> </ul> |
|--|--|--|