

Branch I

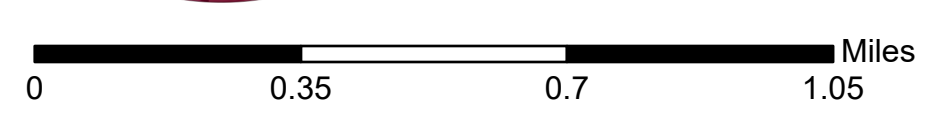
Div A

Div G

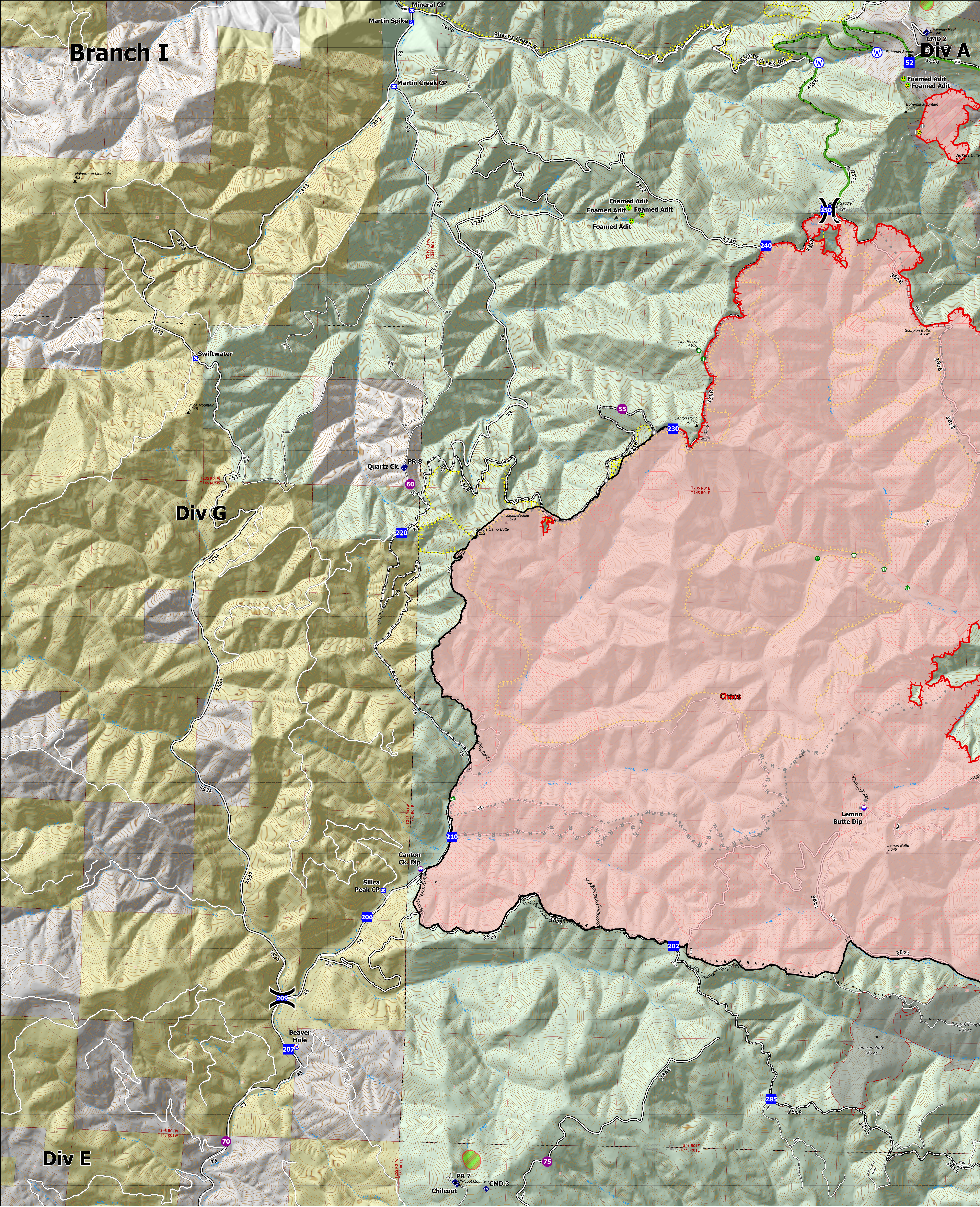
Div E

# Operations Division G

September 05, 2021  
Jack Fire: 23,987 ac  
Rough Patch Complex: 40,082 ac



Structures	Closure	Stream Crossing	Completed Dozer Line	Contained Line	Sensitive Areas	BLM
Area To Protect (points)	Camp	Hazard Tree	Completed Mixed Construction Line	Wildfire Daily Fire Perimeter	Area To Protect (polygon)	Private
Dip Site	Value at Risk	Mobile Weather Unit	Completed Road as Line	IR Intense Heat	Aerial Fire Retardant Avoidance Areas	Fire History (20yr)
Helispot	Other	Repeater	Planned Dozer Line	IR Scattered Heat	Roadless Areas	PACE Lines Primary
Sling Site	Landmark	Hazard	Planned Mixed Construction Line	IR Isolated Heat Source	Forest Service Land	Alternate
Division Break	Water Development or Draft Site	Water Source	Planned Road as Line	Possible IR Heat Source	Wilderness	Contingency
Drop Point	Structure Wrap	Restricted Water Source	Fire Edge	Foamed Adit Closures		Emergency



NR 1071 09/2021 09/20 North American 1983 Datum, LULU, GSI