

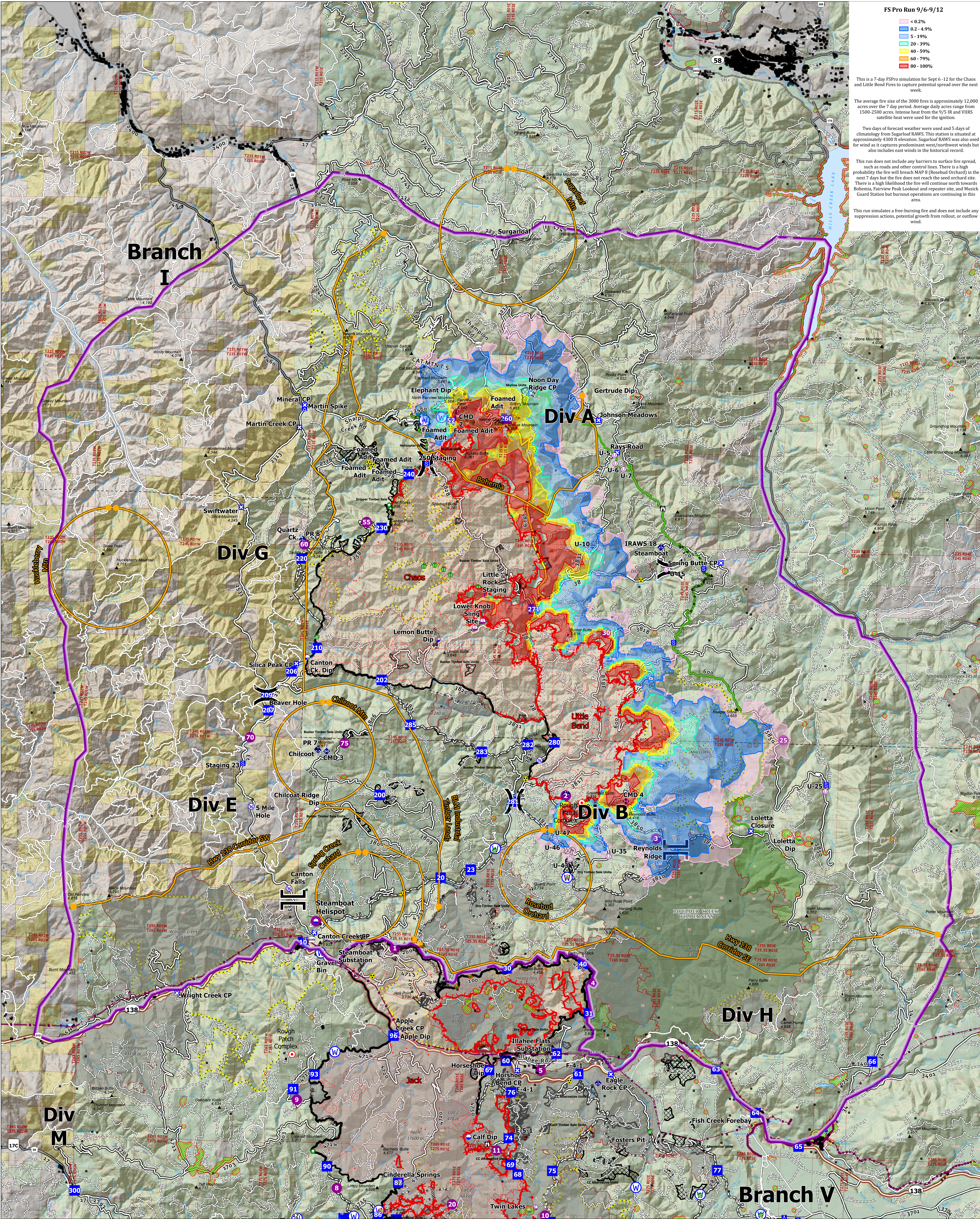
This is a 7-day FSPro simulation for Sept 6-12 for the Chaos and Little Bend Fires to capture potential spread over the next week.

The average fire size of the 3000 fires is approximately 12,000 acres over the 7 day period. Average daily acres range from 1500-2500 acres. Intense heat from the 9/5 IR and VIIRS satellite heat were used for the ignition.

Two days of forecast weather were used and 5 days of climatology from Sugarloaf RAWS. This station is situated at approximately 4300 ft elevation. Sugarloaf RAWS was also used for wind as it captures predominant west/northwest winds but also includes east winds in the historical record.

This run does not include any barriers to surface fire spread, such as roads and other control lines. There is a high probability the fire will breach MAP 8 (Rosebud Orchard) in the next 7 days but the fire does not reach the seed orchard site. There is a high likelihood the fire will continue north towards Bohemia, Fairview Peak Lookout and re-ester site, and Musick Guard Station but burnout operations are continuing in this area.

This run simulates a free-burning fire and does not include any suppression actions, potential growth from rollout, or outflow wind.



Chaos & Little Bend MAPs/FS Pro 9/6-9/12

Jack Fire: 23,990 ac
 Rough Patch Complex: 41,185 ac
September 06, 2021



<ul style="list-style-type: none"> Management Action Points Chaos and Little Bend Planning Area Structures Utility Power Lines Dip Site 	<ul style="list-style-type: none"> Helispot Sling Site Unimproved Landing Area Division Break Branch Break 	<ul style="list-style-type: none"> Drop Point Closure Camp Staging Area Lookout Hot Spot - Spot Fire 	<ul style="list-style-type: none"> Value at Risk Other Landmark Water Development or Draft Site Structure Wrap 	<ul style="list-style-type: none"> Stream Crossing Hazard Tree Mobile Weather Unit Repeater Hazard Water Source 	<ul style="list-style-type: none"> Restricted Water Source Completed Dozer Line Completed Mixed Construction Line Completed Road as Line 	<ul style="list-style-type: none"> Fire Edge Contained Line Wildfire Daily Fire Perimeter IR Intense Heat IR Scattered Heat IR Isolated Heat Source Timber Sales Aerial Fire Retardant Avoidance Areas 	<ul style="list-style-type: none"> Roadless Areas Forest Service Land Wilderness BLM Private Fire History (20yr) PACE Lines Primary Alternate
--	---	--	---	---	--	---	--