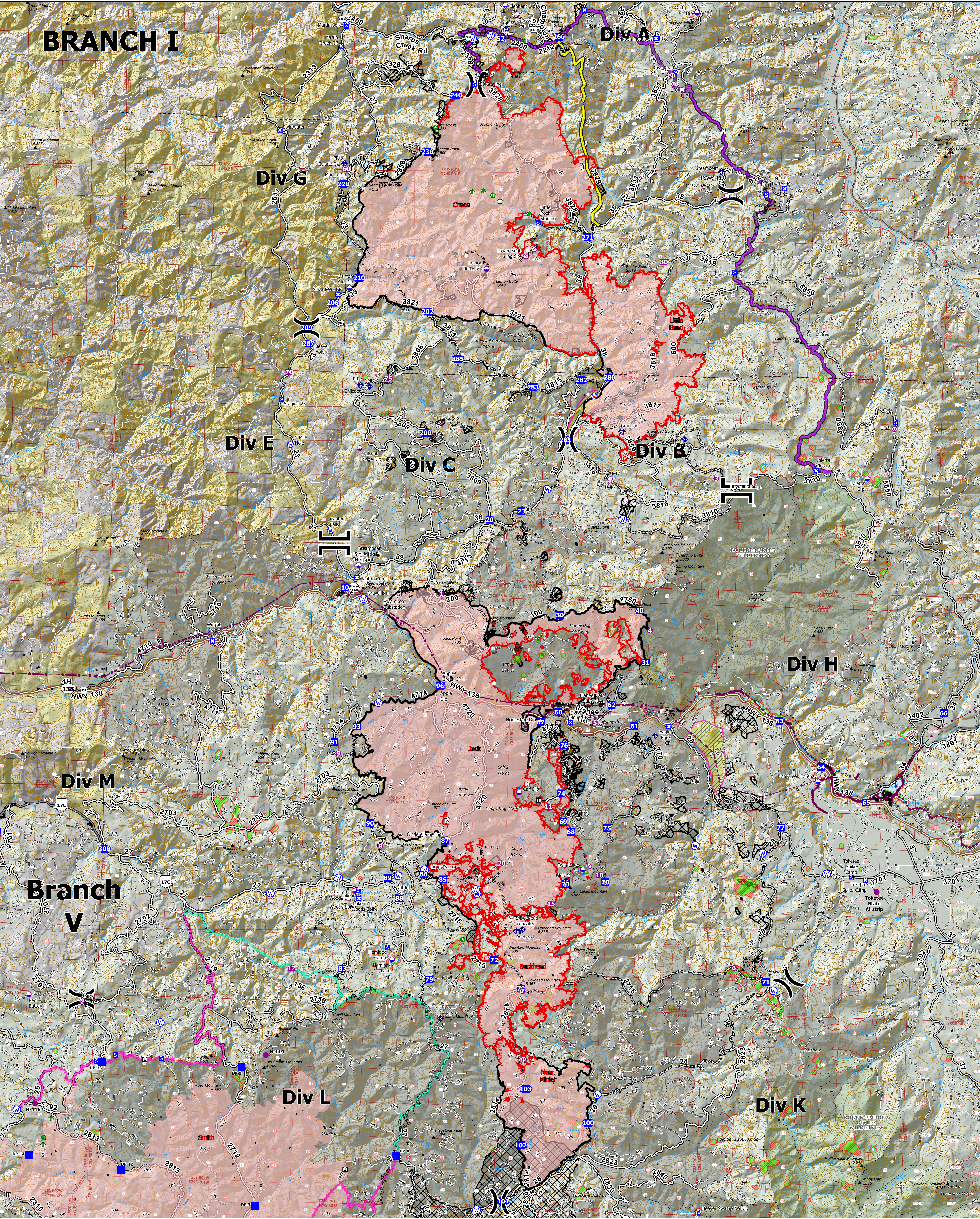
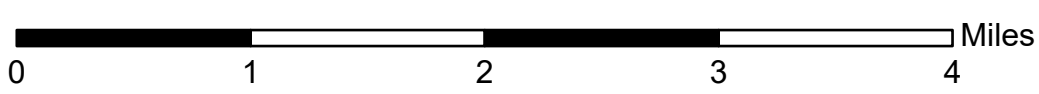
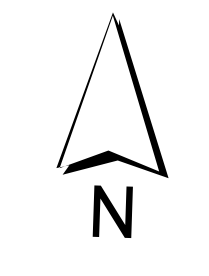


BRANCH I



Operations Overview

Jack Fire: 23,990 ac
 Rough Patch Complex: 41,185 ac
 September 07, 2021



- | | | | | | | |
|---|---|--|--|--|---|--|
| <ul style="list-style-type: none"> ○ Aerial Hazard ○ Dip Site ● Helispot ○ Sling Site ○ Unimproved Landing Area II Branch Break X Division Break ■ Drop Point | <ul style="list-style-type: none"> ■ Closure ■ Camp ■ Staging Area ■ Lookout ○ Value at Risk ○ Structure Wrap ○ Stream Crossing ● Resource Location | <ul style="list-style-type: none"> ● Hazard Tree ◆ Mobile Weather Unit ◆ Repeater ○ Water Source ○ Restricted Water Source ○ County Boundary ▲ Structures ▲ Lane County Structures | <ul style="list-style-type: none"> ◆ Area To Protect (points) — Utility Power Lines — Aerial Fire Retardant Avoidance Areas — Completed Dozer Line — Completed Hand Line — Completed Mixed Construction Line — Completed Road as Line — Planned Dozer Line | <ul style="list-style-type: none"> — Planned Fuel Break — Planned Hand Line — Planned Mixed Construction Line — Planned Road as Line — Contained Line — Wildfire Daily Fire Perimeter — Sensitive Areas | <ul style="list-style-type: none"> ■ Area To Protect (polygon) ■ Timber Sales ■ Fire History (20yr) ■ Wilderness ■ BLM ■ Private ■ Forest Service Land | <ul style="list-style-type: none"> — PACE Lines — Primary — Alternate — Contingency — Emergency — Proposed Control Lines — FL Red — NR IMT 1 |
|---|---|--|--|--|---|--|