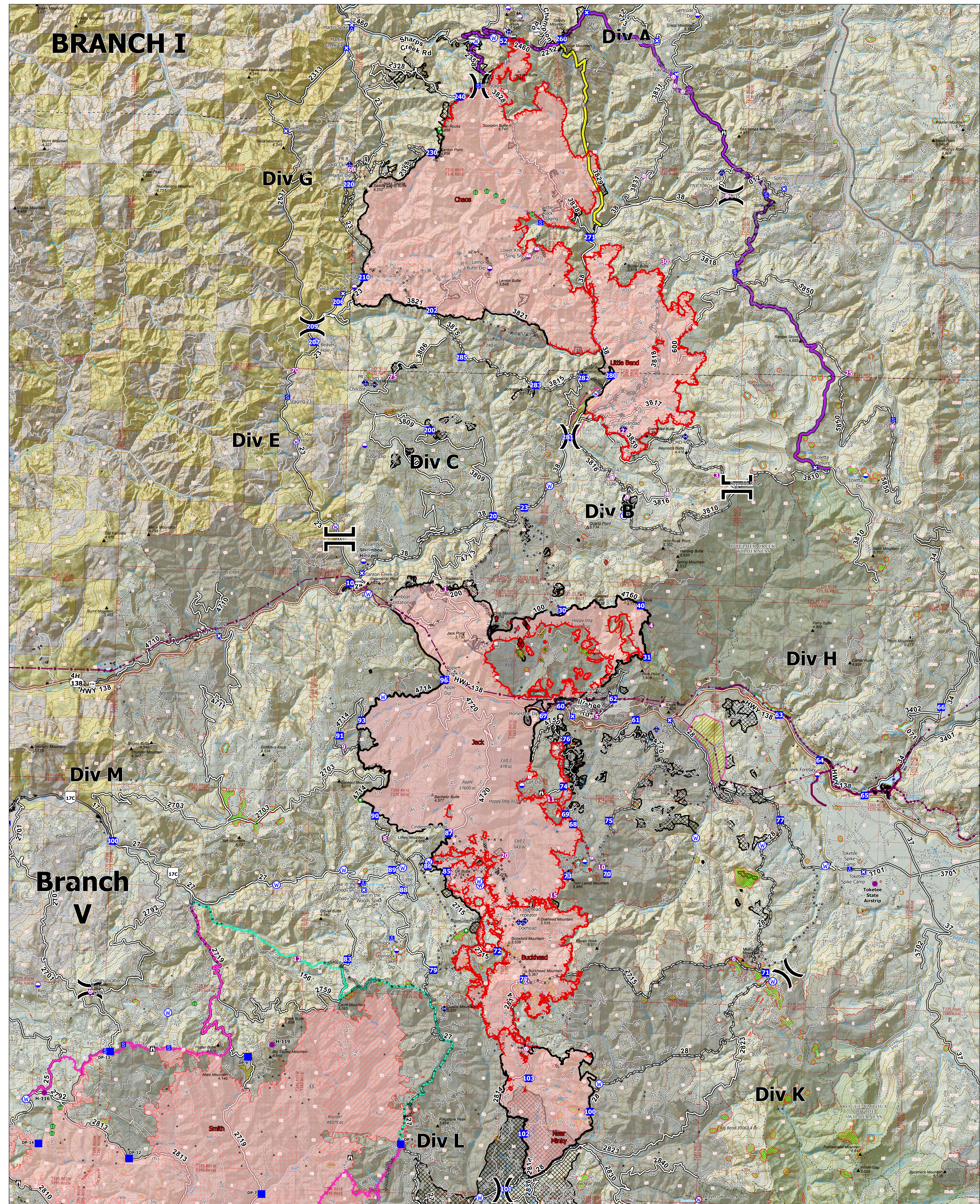
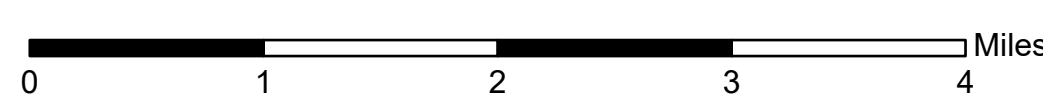


# BRANCH I



## Operations Overview

Jack Fire: 23,990 ac  
Rough Patch Complex: 43,177 ac  
September 08, 2021



- |                           |                       |   |                                     |                                 |                       |               |
|---------------------------|-----------------------|---|-------------------------------------|---------------------------------|-----------------------|---------------|
| ○ Aerial Hazard           | ■ Camp                | ◆ Repeater                              | ⬮ Completed Dozer Line              | ▬ Fire Edge                     | ■ Fire History (20yr) | ▬ PACE Lines  |
| ● Dip Site                | ■ Staging Area        | ⊕ Water Source                          | ⬮ Completed Hand Line               | ▬ Contained Line                | ■ Wilderness          | ▬ Primary     |
| ○ Helispot                | ■ Lookout             | ⊕ Restricted Water Source               | ⬮ Completed Mixed Construction Line | ▬ Wildfire Daily Fire Perimeter | ■ BLM                 | ▬ Alternate   |
| ○ Sling Site              | ○ Value at Risk       | ⊕ County Boundary                       | ⬮ Completed Road as Line            | ● IR Isolated Heat Source       | ▬ Private             | ▬ Contingency |
| ○ Unimproved Landing Area | ○ Structure Wrap      | ⊕ Lane County Structures                | ⬮ Planned Dozer Line                | ▬ IR Intense Heat               | ■ Forest Service Land | ▬ Emergency   |
| ○ Branch Break            | ● Stream Crossing     | ⊕ Area To Protect (points)              | ⬮ Planned Fuel Break                | ▬ IR Scattered Heat             |                       |               |
| ○ Division Break          | ● Resource Location   | ⊕ Area To Protect (polygons)            | ⬮ Planned Hand Line                 | ▬ Sensitive Areas               |                       |               |
| ■ Drop Point              | ● Hazard Tree         | ⊕ Utility Power Lines                   | ⬮ Planned Mixed Construction Line   | ▬ Area To Protect (polygon)     |                       |               |
| ■ Closure                 | ◆ Mobile Weather Unit | ■ Aerial Fire Retardant Avoidance Areas | ⬮ Planned Road as Line              | ▬ Timber Sales                  |                       |               |