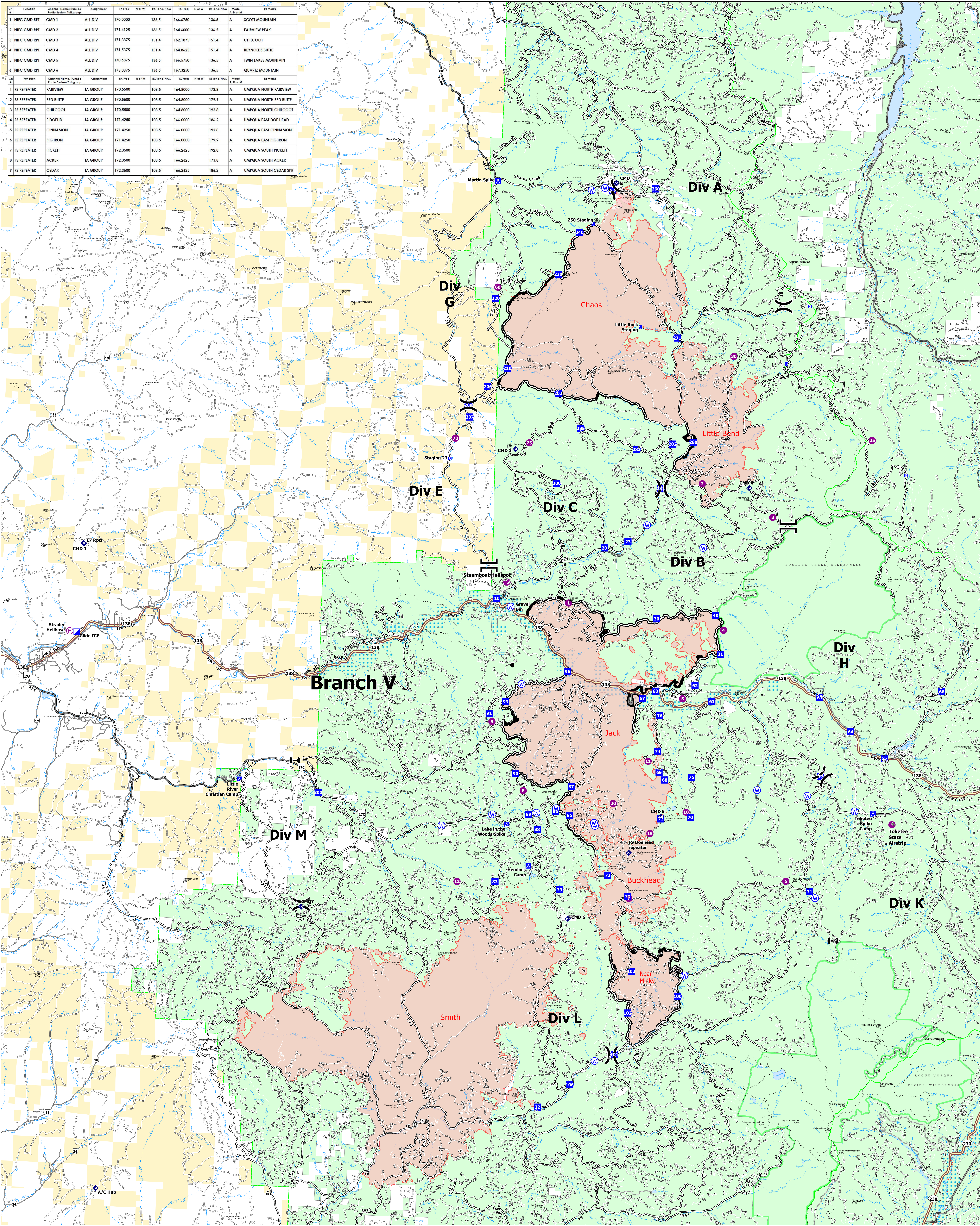


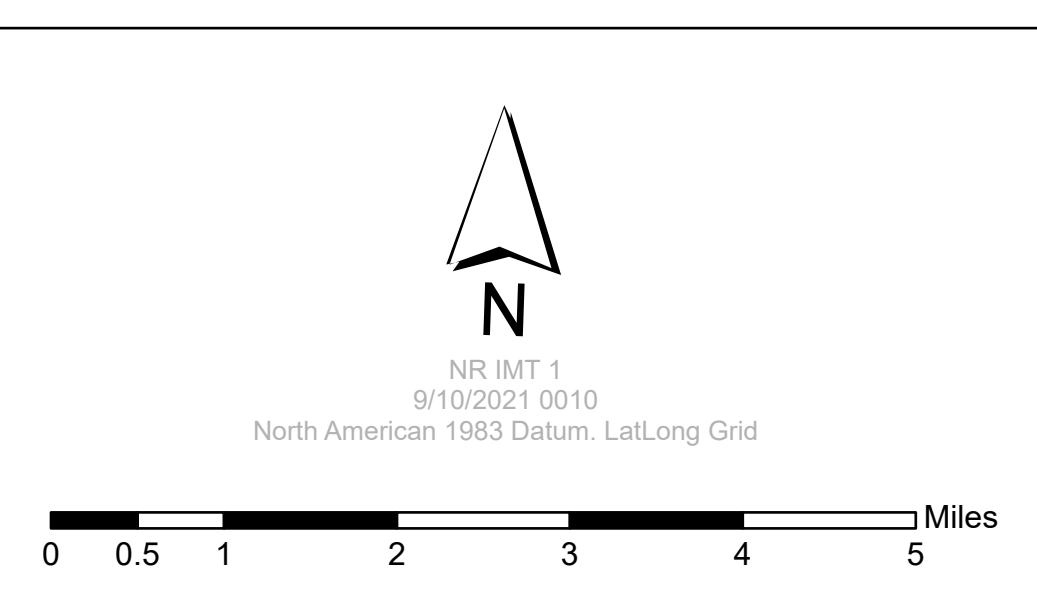
Function	Channel Name/Turned Radio System Talkgroup	Assignment	RX Freq	N or W	RX Tone/NAC	TX Freq	N or W	TX Tone/NAC	Mode	Remarks
1 NIFC CMD RPT	CMD 1	ALL DIV	170.0000		136.5	166.6750	136.5	A	A	SCOTT MOUNTAIN
2 NIFC CMD RPT	CMD 2	ALL DIV	171.4125		136.5	166.4000	136.5	A	A	FAIRVIEW PEAK
3 NIFC CMD RPT	CMD 3	ALL DIV	171.8875		151.4	162.1875	151.4	A	A	CHILCOOT
4 NIFC CMD RPT	CMD 4	ALL DIV	171.5375		151.4	166.8625	151.4	A	A	REYNOLDS BUTTE
5 NIFC CMD RPT	CMD 5	ALL DIV	170.6875		136.5	166.5750	136.5	A	A	TWIN LAKES MOUNTAIN
6 NIFC CMD RPT	CMD 6	ALL DIV	173.0375		136.5	167.3250	136.5	A	A	QUARTZ MOUNTAIN

Function	Channel Name/Turned Radio System Talkgroup	Assignment	RX Freq	N or W	RX Tone/NAC	TX Freq	N or W	TX Tone/NAC	Mode	Remarks
1 FS REPEATER	FAIRVIEW	IA GROUP	170.5500		103.5	164.8000	173.8	A	A	UMPQUA NORTH FAIRVIEW
2 FS REPEATER	RED BUTTE	IA GROUP	170.5500		103.5	164.8000	179.9	A	A	UMPQUA NORTH RED BUTTE
3 FS REPEATER	CHILCOOT	IA GROUP	170.5500		103.5	164.8000	192.8	A	A	UMPQUA NORTH CHILCOOT
4 FS REPEATER	E DOEHD	IA GROUP	171.4250		103.5	166.0000	186.2	A	A	UMPQUA EAST DOE HEAD
5 FS REPEATER	CINNAMON	IA GROUP	171.4250		103.5	166.0000	192.8	A	A	UMPQUA EAST CINNAMON
6 FS REPEATER	PIG IRON	IA GROUP	171.4250		103.5	166.0000	179.9	A	A	UMPQUA EAST PIG IRON
7 FS REPEATER	PICKETT	IA GROUP	172.3500		103.5	166.2625	192.8	A	A	UMPQUA SOUTH PICKETT
8 FS REPEATER	ACKER	IA GROUP	172.3500		103.5	166.2625	173.8	A	A	UMPQUA SOUTH ACKER
9 FS REPEATER	CEDAR	IA GROUP	172.3500		103.5	166.2625	186.2	A	A	UMPQUA SOUTH CEDAR SPR



**Transportation**  
**Rough Patch Complex**  
 September 10, 2021  
 Jack Fire: 23,990 Ac  
 Rough Patch Complex: 44,434 Ac



- Helispot
- Ⓜ Helibase
- ⌘ Division Break
- ⌚ Branch Break
- ⌚ Zone Break
- Ⓜ Incident Command Post
- Ⓜ Drop Point
- Ⓜ Camp
- Ⓜ Staging Area
- Ⓜ Water Source
- Ⓜ Repeater
- Ⓜ Contained Line
- Ⓜ Wildfire Daily Fire Perimeter
- Paved Roads
- Dirt (Not Paved)
- Primary Hwy
- Paved Road
- Gravel Road
- Dirt Roads
- Unimproved Roads
- Closed Roads
- Trail
- National Designated Trail
- BLM
- Wild and Scenic River
- Forest Service Land