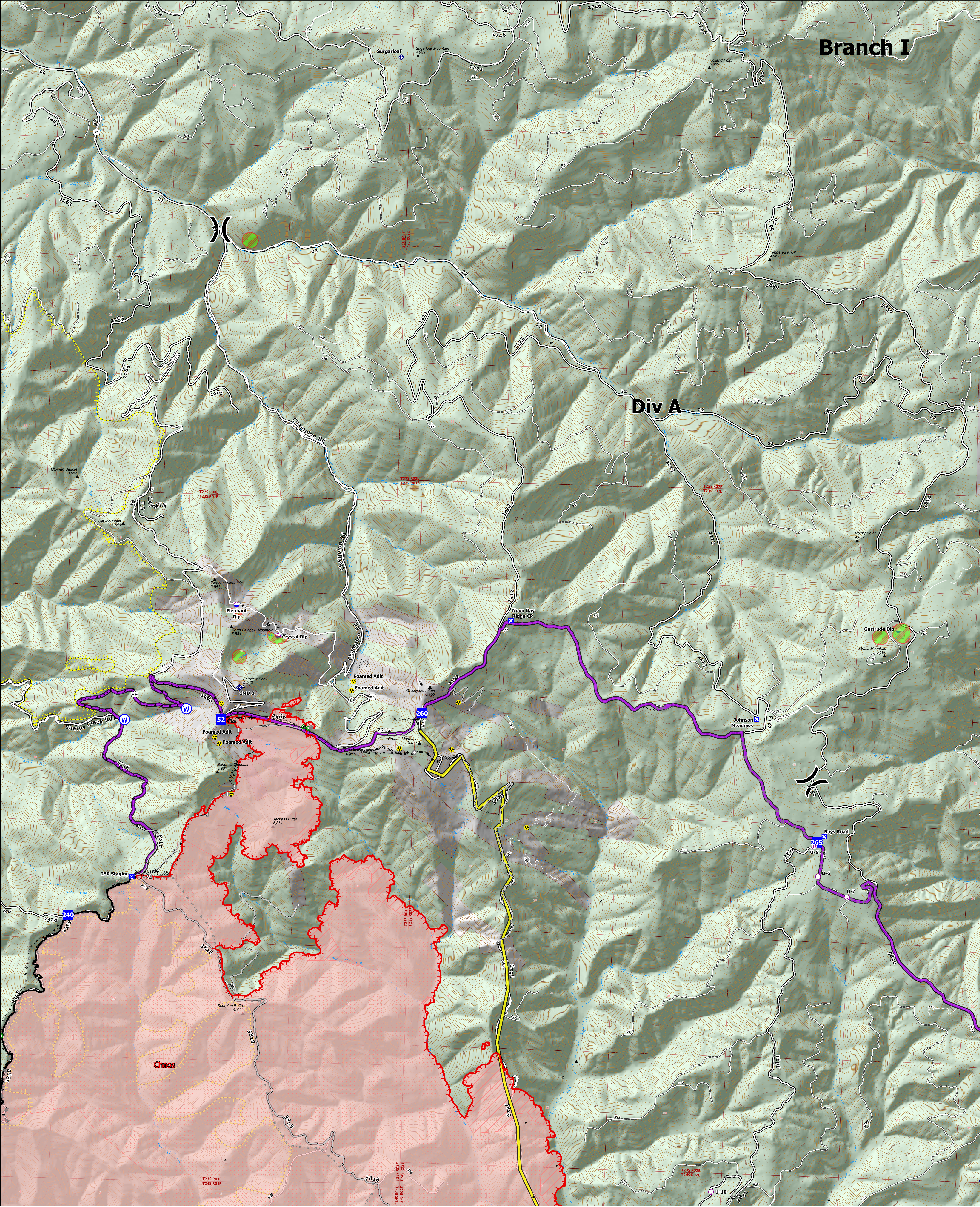


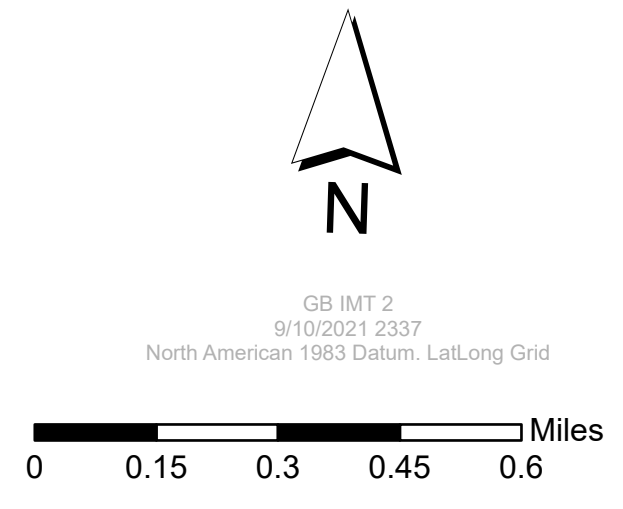
Branch I

Div A



Operations Division A September 11, 2021

Jack Fire: 23,990 ac
Rough Patch Complex: 44,434 ac



- | | | | | |
|--|---|---|--|---|
| <ul style="list-style-type: none"> ● Dip Site ○ Unimproved Landing Area ✕ Division Break ■ Drop Point ■ Closure ■ Staging Area ■ Lookout ● Value at Risk | <ul style="list-style-type: none"> ● Other ○ Landmark ○ Structure Wrap ● Hazard Tree ◆ Mobile Weather Unit ◆ Repeater ◆ Hazard ● Water Source | <ul style="list-style-type: none"> --- Completed Dozer Line --- Completed Fuel Break --- Completed Hand Line --- Completed Mixed Construction Line --- Completed Road as Line --- Planned Dozer Line --- Planned Mixed Construction Line --- Planned Road as Line | <ul style="list-style-type: none"> --- Access or Improved Road --- Fire Edge --- Contained Line --- Wildfire Daily Fire Perimeter --- IR Intense Heat --- IR Scattered Heat ● IR Isolated Heat Source | <ul style="list-style-type: none"> ■ Aerial Fire Retardant Avoidance Areas ■ Roadless Areas ■ Forest Service Land ■ Private ■ PACE Lines ■ Primary ■ Alternate |
|--|---|---|--|---|