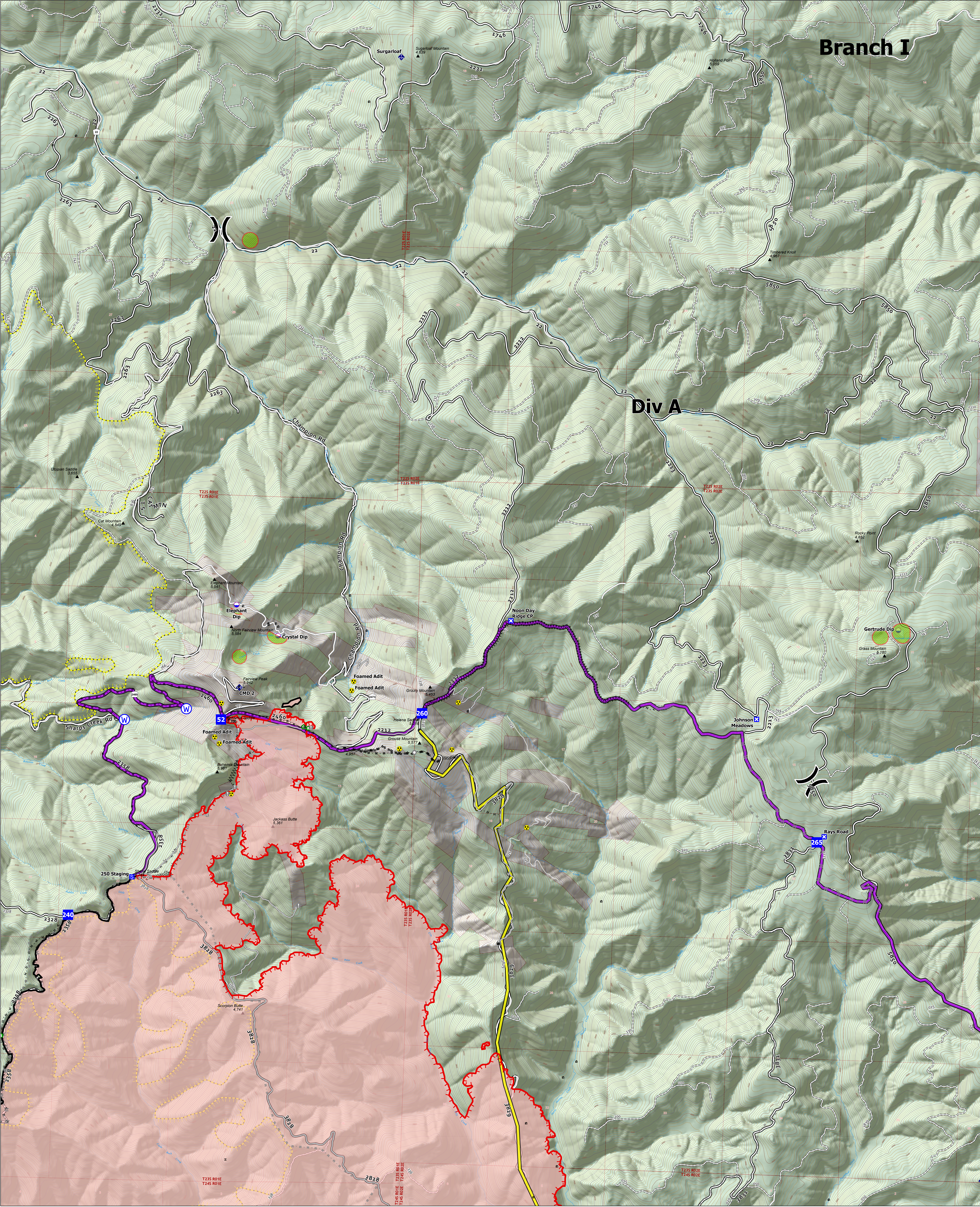


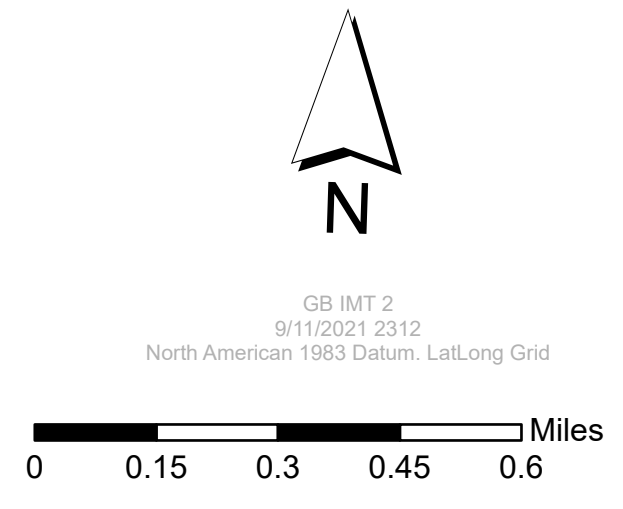
Branch I

Div A



Operations Division A September 12, 2021

Jack Fire: 23,990 ac
Rough Patch Complex: 44,434 ac



- | | | | | |
|------------------|-----------------------|-------------------------------------|---|-----------------------|
| ● Dip Site | ● Other | ⊙ Water Source | ⊞ Planned Mixed Construction Line | ⬜ Roadless Areas |
| ⌘ Division Break | ● Landmark | ⊞ Completed Dozer Line | ⊞ Planned Road as Line | ⬜ Forest Service Land |
| ● Drop Point | ● Structure Wrap | ⊞ Completed Fuel Break | ⊞ Access or Improved Road | ⬜ Private |
| ⊞ Closure | ● Hazard Tree | ⊞ Completed Hand Line | ⊞ Fire Edge | ⬜ PACE Lines |
| ⊞ Staging Area | ● Mobile Weather Unit | ⊞ Completed Mixed Construction Line | ⊞ Contained Line | ⬜ Primary |
| ⊞ Lookout | ● Repeater | ⊞ Completed Road as Line | ⊞ Wildfire Daily Fire Perimeter | ⬜ Alternate |
| ● Value at Risk | ● Hazard | ⊞ Planned Dozer Line | ⊞ Aerial Fire Retardant Avoidance Areas | |