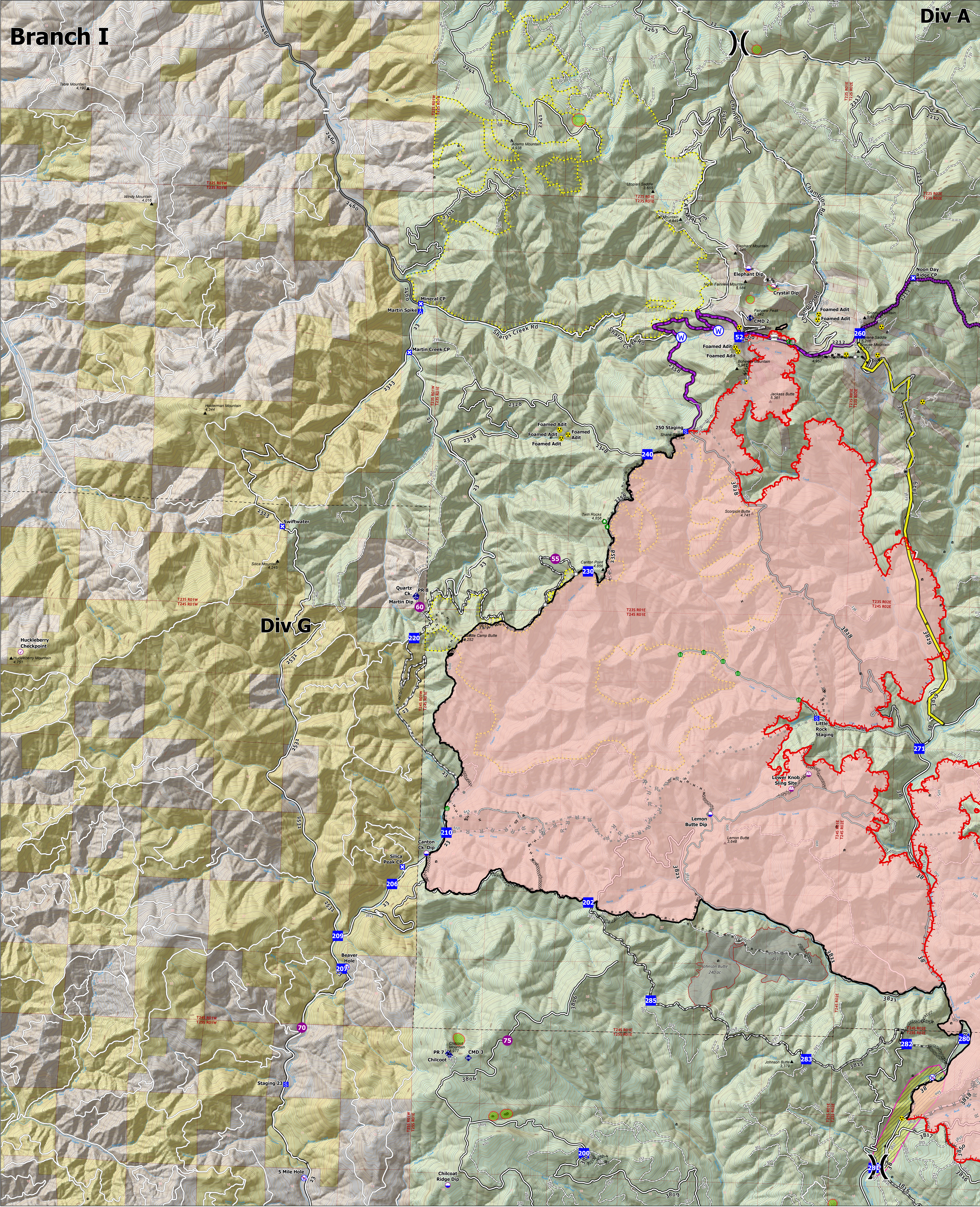


Branch I

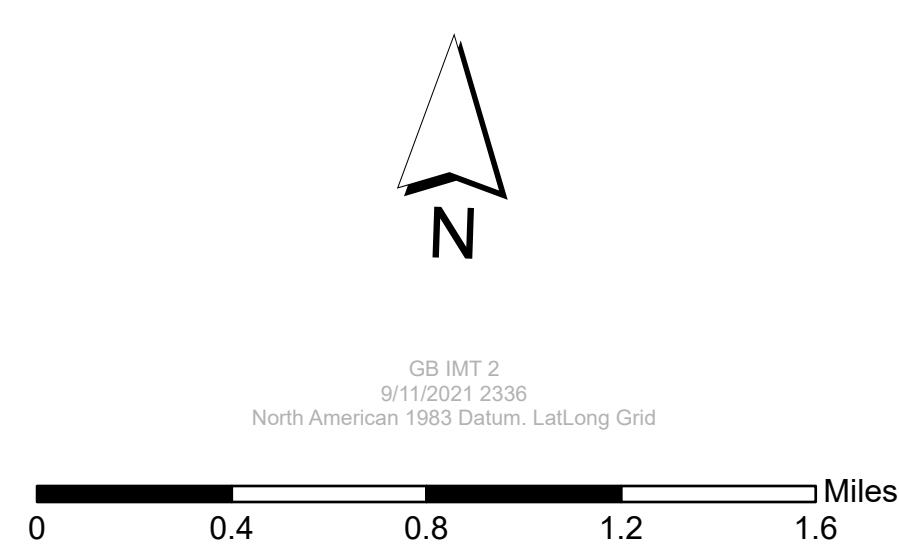
Div A

Div G



**Operations
Division G**
September 12, 2021

Jack Fire: 23,990 ac
Rough Patch Complex: 44,434 ac



- | | | | | | |
|--------------------|-----------------------------------|---------------------------|-------------------------------------|---|-----------------------|
| • Structures | ■ Camp | ● Hazard Tree | — Completed Hand Line | — Fire Edge | ■ Forest Service Land |
| ○ Check Point (RB) | ■ Staging Area | ● Mobile Weather Unit | — Completed Mixed Construction Line | — Contained Line | ■ BLM |
| ○ Dip Site | ○ Value at Risk | ● Repeater | — Completed Road as Line | — Wildfire Daily Fire Perimeter | ■ Private |
| ● Helispot | ○ Other | ● Hazard | — Planned Dozer Line | — Sensitive Areas | ■ Fire History (20yr) |
| ○ Sling Site | ○ Landmark | ● Water Source | — Planned Hand Line | — Area To Protect (polygon) | — PACE Lines |
| ✕ Division Break | ● Water Development or Draft Site | ● Restricted Water Source | — Planned Mixed Construction Line | — Aerial Fire Retardant Avoidance Areas | — Primary |
| ■ Drop Point | ● Structure Wrap | ● Completed Dozer Line | — Planned Road as Line | — Roadless Areas | — Alternate |
| ■ Closure | ● Stream Crossing | — Completed Fuel Break | — Access or Improved Road | | |