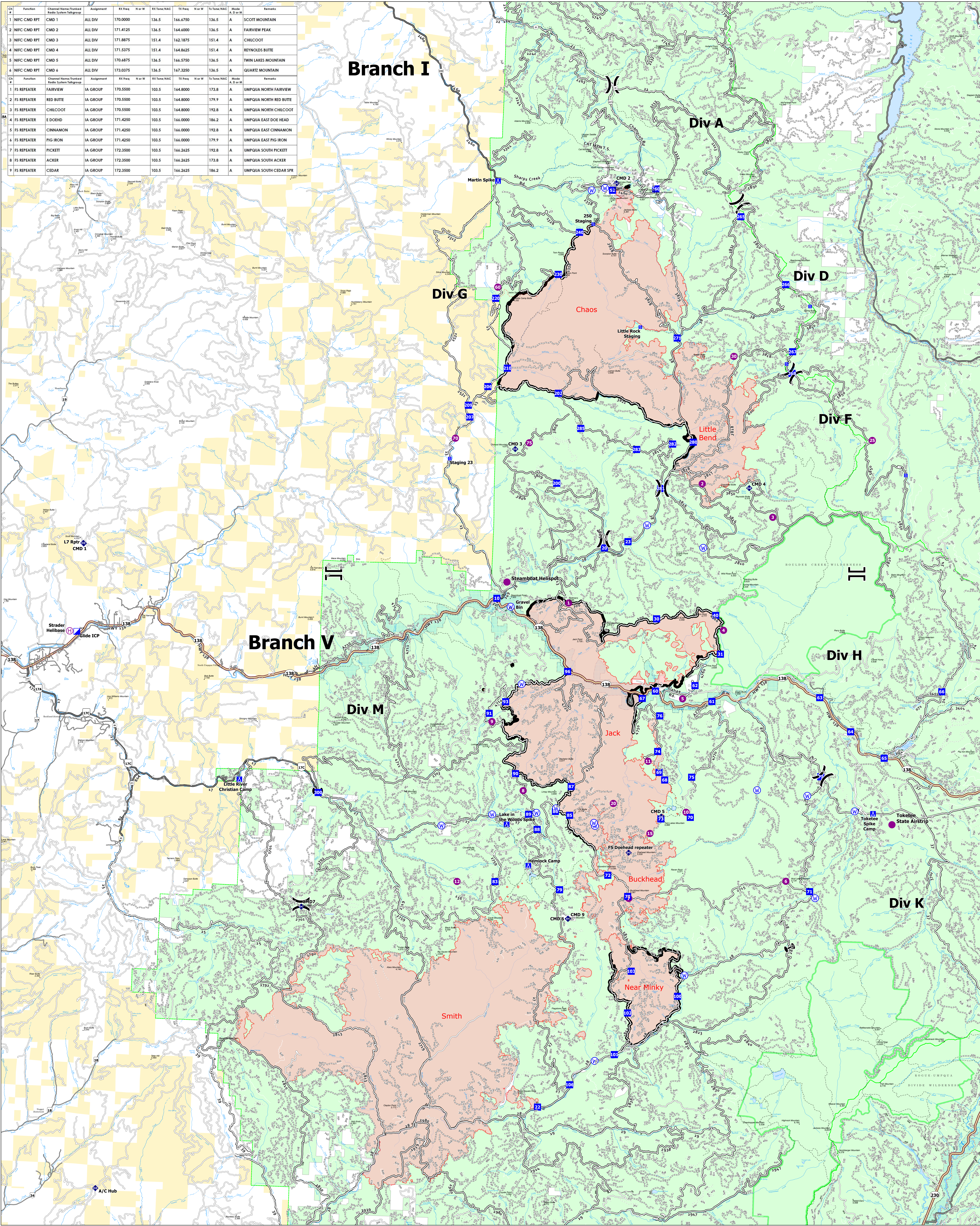
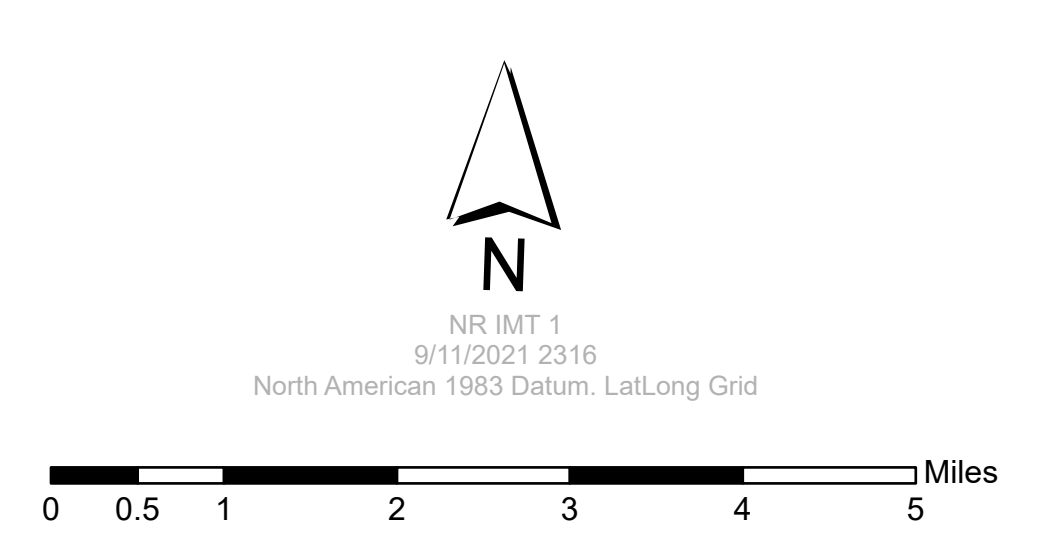


Ch	Function	Channel Name/Tuned Radio System Taggroup	Assignment	RX Freq	N or W	RX Tone/NAC	TX Freq	N or W	TX Tone/NAC	Mode	Remarks
1	NIFC CMD RPT	CMD 1	ALL DIV	170.0000		136.5	166.4750	136.5	A	A	SCOTT MOUNTAIN
2	NIFC CMD RPT	CMD 2	ALL DIV	171.4125		136.5	164.4000	136.5	A	A	FAIRVIEW PEAK
3	NIFC CMD RPT	CMD 3	ALL DIV	171.8875		151.4	162.1875	151.4	A	A	CHILCOOT
4	NIFC CMD RPT	CMD 4	ALL DIV	171.5375		151.4	164.8625	151.4	A	A	REYNOLDS BUTTE
5	NIFC CMD RPT	CMD 5	ALL DIV	170.4875		136.5	166.5750	136.5	A	A	TWIN LAKES MOUNTAIN
6	NIFC CMD RPT	CMD 6	ALL DIV	173.0375		136.5	167.3250	136.5	A	A	QUARTZ MOUNTAIN
1	FS REPEATER	FAIRVIEW	IA GROUP	170.5500		103.5	164.8000	173.8	A	A	UMPQUA NORTH FAIRVIEW
2	FS REPEATER	RED BUTTE	IA GROUP	170.5500		103.5	164.8000	179.9	A	A	UMPQUA NORTH RED BUTTE
3	FS REPEATER	CHILCOOT	IA GROUP	170.5500		103.5	164.8000	192.8	A	A	UMPQUA NORTH CHILCOOT
4	FS REPEATER	E DOEHD	IA GROUP	171.4250		103.5	166.0000	186.2	A	A	UMPQUA EAST DOE HEAD
5	FS REPEATER	CINNAMON	IA GROUP	171.4250		103.5	166.0000	192.8	A	A	UMPQUA EAST CINNAMON
6	FS REPEATER	PIG IRON	IA GROUP	171.4250		103.5	166.0000	179.9	A	A	UMPQUA EAST PIG IRON
7	FS REPEATER	PICKETT	IA GROUP	172.3500		103.5	166.2625	192.8	A	A	UMPQUA SOUTH PICKETT
8	FS REPEATER	ACKER	IA GROUP	172.3500		103.5	166.2625	173.8	A	A	UMPQUA SOUTH ACKER
9	FS REPEATER	CEDAR	IA GROUP	172.3500		103.5	166.2625	186.2	A	A	UMPQUA SOUTH CEDAR SPR



Transportation
Rough Patch Complex
 September 12, 2021
 Jack Fire: 23,990 Ac
 Rough Patch Complex: 44,434 Ac



- Helispot
- Camp
- Dirt (Not Paved)
- Helibase
- Staging Area
- Primary Hwy
- Division Break
- Water Source
- Paved Hwy
- Branch Break
- Repeater
- Gravel Road
- Zone Break
- Incident Command Post
- Dirt Roads
- Incident Command Post
- Drop Point
- Unimproved Roads
- Wildfire Daily Fire Perimeter
- Paved Roads
- Closed Roads
- Trail
- National Designated Trail
- BLM
- Wild and Scenic River
- Forest Service Land