

Branch V

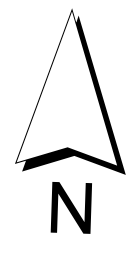
Div A



# Operations Division A

September 13, 2021

Jack Fire: 24,165 ac  
Rough Patch Complex: 46,109 ac



0 0.15 0.3 0.45 0.6  
Miles

- |                  |                          |                                     |   |                       |
|------------------|--------------------------|-------------------------------------|---|-----------------------|
| ● Dip Site       | ● Other                  | /// Completed Fuel Break            | — Access or Improved Road               | ■ Roadless Areas      |
| X Division Break | ○ Landmark               | H Completed Hand Line               | — Fire Edge                             | ■ Forest Service Land |
| II Branch Break  | ○ Structure Wrap         | M Completed Mixed Construction Line | — Contained Line                        | ■ Private             |
| ■ Drop Point     | ◆ Repeater               | R Completed Road as Line            | ■ Wildfire Daily Fire Perimeter         | ■ PACE Lines          |
| ■ Closure        | ★ Hazard                 | /// Planned Dozer Line              | ■ IR Scattered Heat                     | ■ Primary             |
| ■ Staging Area   | ○ Water Source           | /// Planned Mixed Construction Line | ● IR Isolated Heat Source               | ■ Alternate           |
| ○ Value at Risk  | /// Completed Dozer Line | ■ Planned Road as Line              | ■ Aerial Fire Retardant Avoidance Areas |                       |