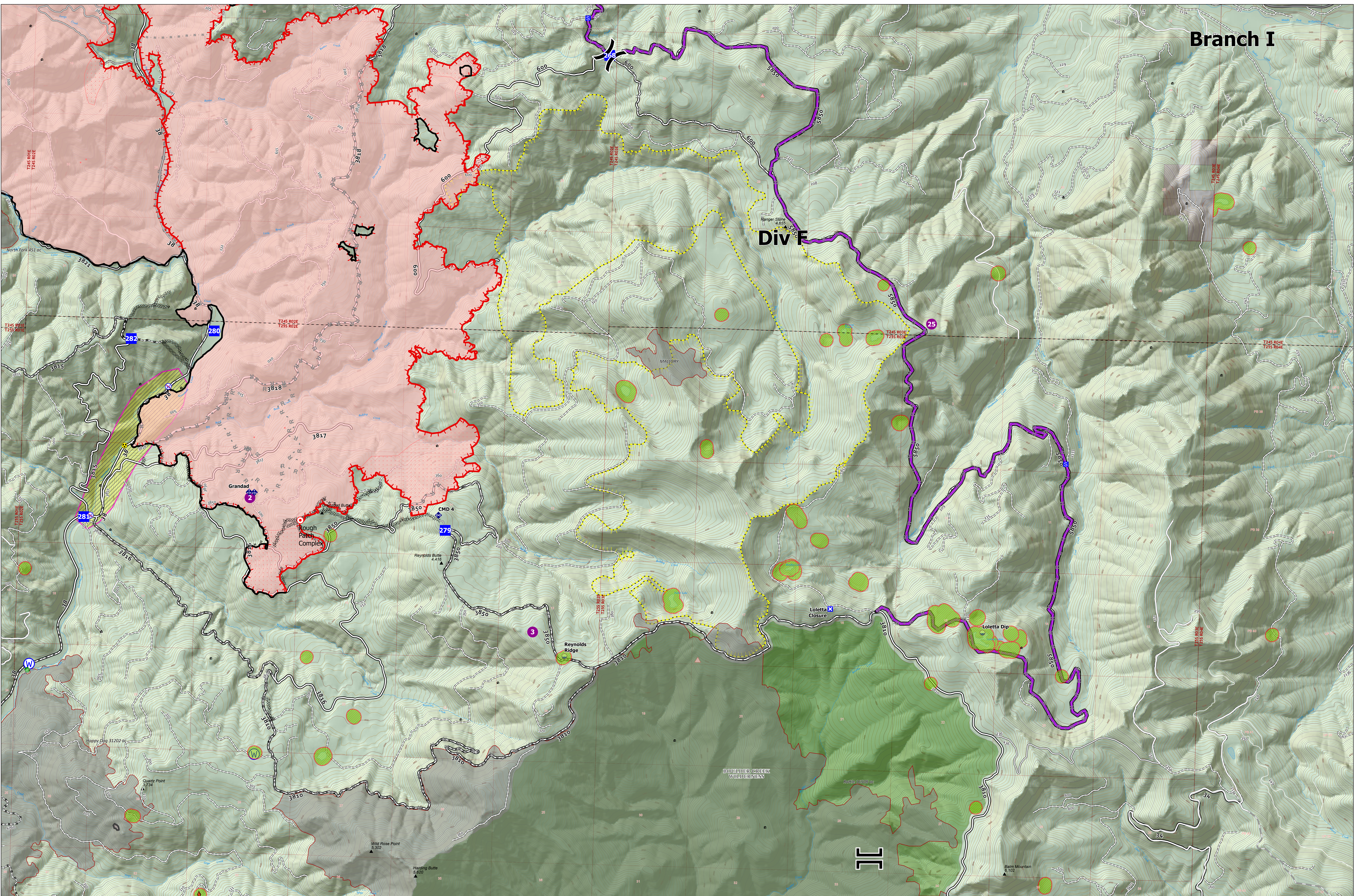


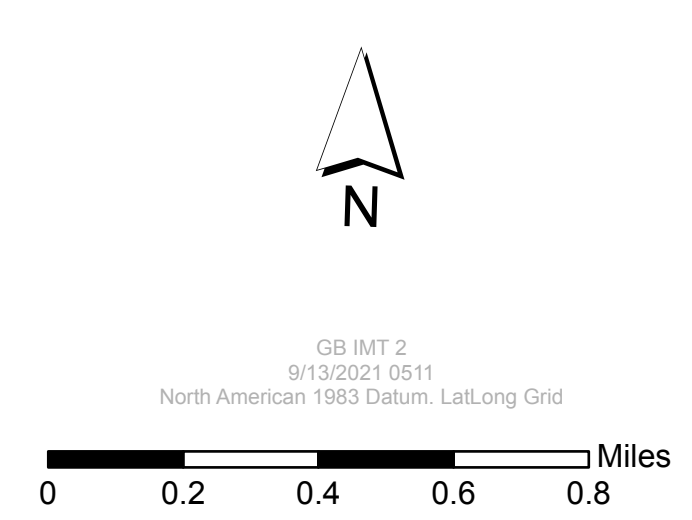
Div F



Operations Division F

September 13, 2021

Jack Fire: 24,165 ac
Rough Patch Complex: 46,109 ac



- | | | | | | | |
|--|---|--|--|---|--|---|
| <ul style="list-style-type: none"> ■ Structures ◆ Area To Protect (points) ■ Dip Site ● Helispot ✂ Division Break ⌘ Branch Break | <ul style="list-style-type: none"> ■ Drop Point ■ Closure ■ Staging Area ● Hot Spot - Spot Fire ● Other ● Water Development or Draft Site | <ul style="list-style-type: none"> ◆ Mobile Weather Unit ◆ Repeater ◆ Hazard ● Water Source ● Restricted Water Source ◆ Completed Dozer Line | <ul style="list-style-type: none"> — Completed Hand Line — Completed Mixed Construction Line — Completed Road as Line — Planned Mixed Construction Line — Planned Road as Line — Access or Improved Road | <ul style="list-style-type: none"> — Fire Edge — Contained Line — Wildfire Daily Fire Perimeter — IR Intense Heat — IR Scattered Heat ● IR Isolated Heat Source | <ul style="list-style-type: none"> ■ Sensitive Areas ■ Area To Protect (polygon) ■ Aerial Fire Retardant Avoidance Areas ■ Roadless Areas ■ Forest Service Land | <ul style="list-style-type: none"> ■ Wilderness ■ Private ■ Fire History (20yr) ■ PACE Lines ■ Primary |
|--|---|--|--|---|--|---|