

Security

Rough Patch Complex/Jack Fire

September 13, 2021

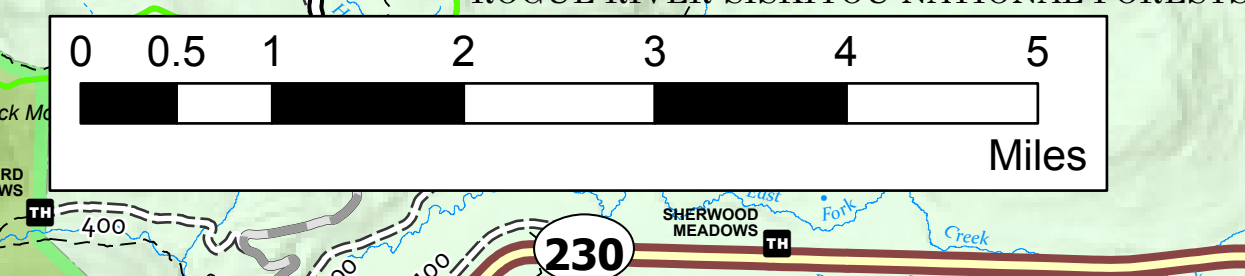
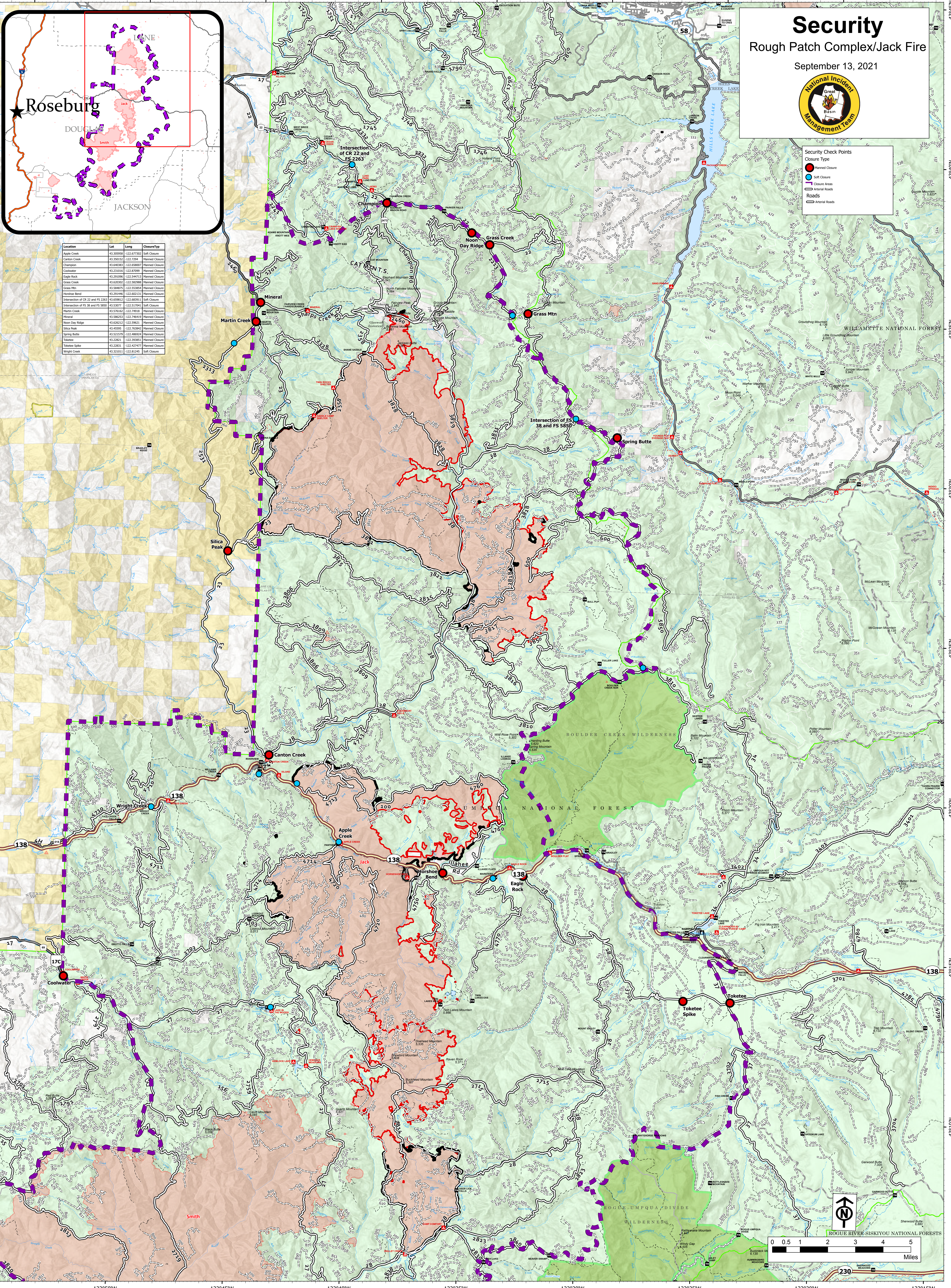
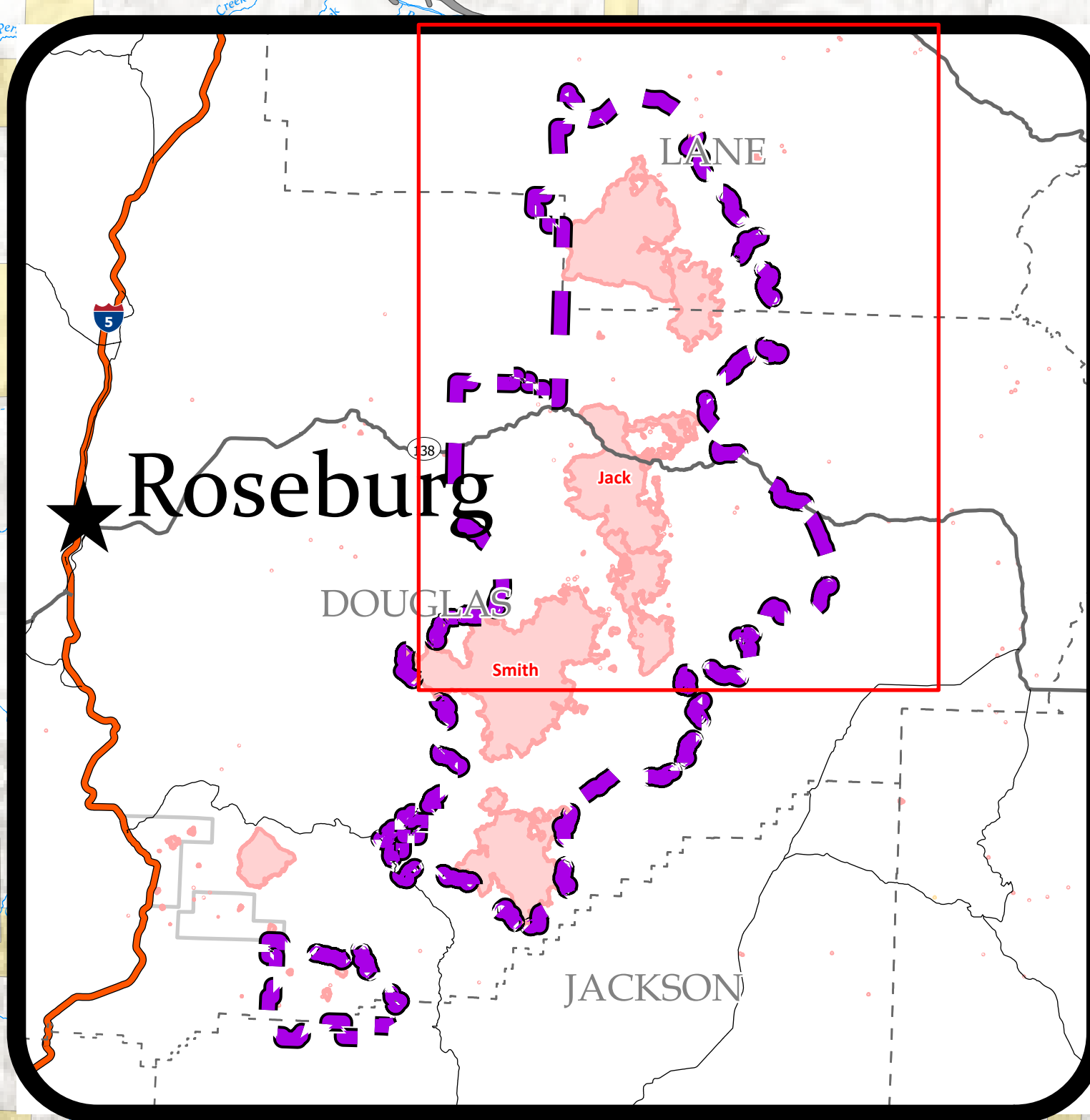


Security Check Points

Closure Type

- Hard Closure
- Soft Closure
- Closure Areas
- Aerial Roads
- Roads
- Aerial Roads

Location	Lat	Long	ClosureType
Apple Creek	43.30998	-122.67762	Soft Closure
Canton Creek	43.35612	-122.7294	Hard Closure
Champion	43.64083	-122.65807	Hard Closure
Coolwater	43.23816	-122.70799	Hard Closure
Eagle Rock	43.29206	-122.54712	Hard Closure
Grass Creek	43.62003	-122.56268	Hard Closure
Grass Mtn	43.58875	-122.55354	Hard Closure
Horseshoe Bend	43.29146	-122.60121	Hard Closure
Intersection of CR 22 and FS 2263	43.62812	-122.60291	Soft Closure
Intersection of FS 38 and FS 5850	43.52077	-122.51794	Soft Closure
Martin Creek	43.57612	-122.74918	Hard Closure
Mineral	43.58623	-122.74643	Hard Closure
Noon Day Ridge	43.62612	-122.59621	Hard Closure
Salix Creek	43.40709	-122.79384	Hard Closure
Spring Butte	43.52179	-122.48624	Hard Closure
Takete	43.22821	-122.39385	Hard Closure
Takete Spike	43.22821	-122.42747	Hard Closure
Wright Creek	43.32171	-122.61245	Soft Closure



122°55'W 122°50'W 122°45'W 122°40'W 122°35'W 122°30'W 122°25'W 122°20'W

43°35'N 43°30'N 43°25'N 43°20'N 43°15'N 43°10'N 43°5'N

ROGUE RIVER-SISKIYOU NATIONAL FORESTS

WILLAMETTE NATIONAL FOREST

BOULDER CREEK WILDERNESS

UMPUQUA NATIONAL FOREST

ROGUE-UMPUQUA DIVIDE WILDERNESS