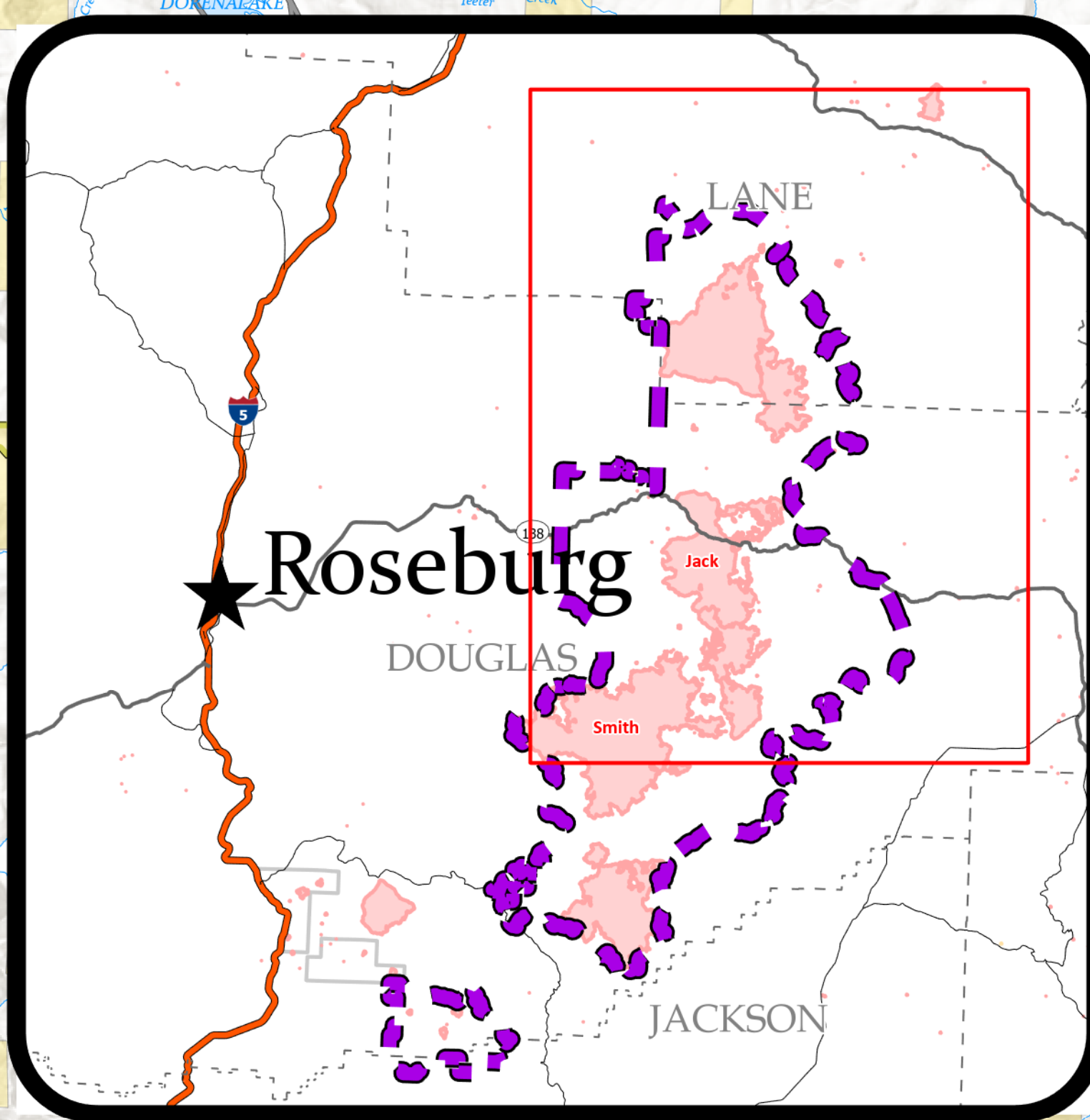


Security

Rough Patch Complex/Jack Fire

September 24, 2021

Location	Lat	Long	Closure Type
Apple Creek	43.30958	-122.67702	Soft Closure
Canton Creek	43.35053	-122.7294	Managed Closure
Champion	43.44203	-122.69902	Managed Closure
Coolwater	43.31963	-122.8529	Managed Closure
Eagle Rock	43.30294	-122.54473	Managed Closure
Grass Creek	43.32091	-122.58298	Managed Closure
Grass Mtn	43.32091	-122.58298	Managed Closure
Hills Creek Spike Camp	43.32091	-122.58298	Managed Closure
Horshoe Bend	43.35159	-122.62133	Managed Closure
Intersection of CR 22 and FS 2263	43.69811	-122.68791	Soft Closure
Intersection of FS 38 and FS 5850	43.52077	-122.71794	Soft Closure
Little Bend Creek	43.31963	-122.8529	Managed Closure
Mineral Sharps Creek	43.35053	-122.7294	Managed Closure
Mixed	43.58253	-122.78443	Managed Closure
Noon Day Ridge	43.42623	-122.59623	Managed Closure
Spring Butte	43.40981	-122.76483	Managed Closure
Spring Butte	43.32579	-122.48604	Managed Closure
Taketee	43.28251	-122.39161	Managed Closure
Taketee Spike	43.28251	-122.42747	Managed Closure
Wright Creek	43.31963	-122.8529	Soft Closure

Security Check Points

- Managed Closure
- Soft Closure
- Closure Areas
- Arterial Roads

Roads

- Arterial Roads

