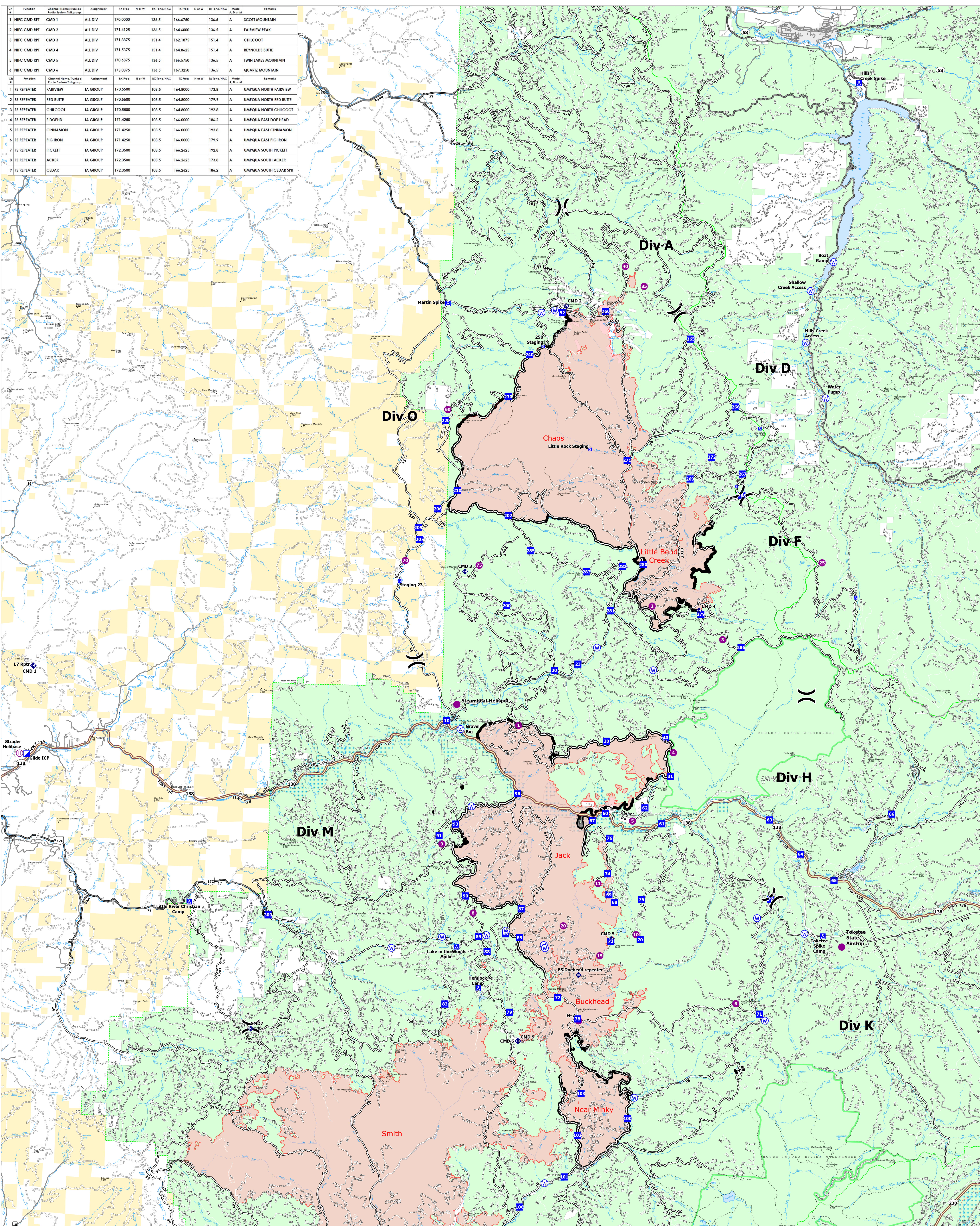
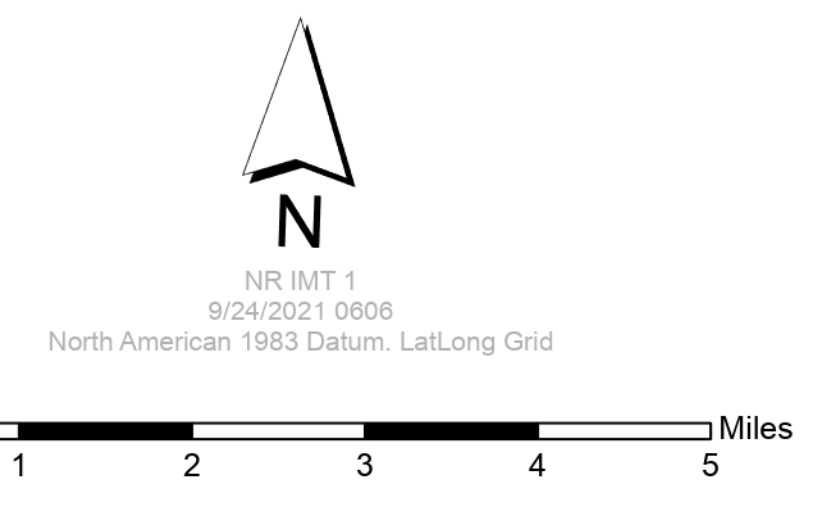


Function	Channel Name/Turned Radio System Tag/Group	Assignment	KX Freq	N or W	KX Tone/NAC	TX Freq	N or W	Tx Tone/NAC	Mode	Remarks
1 NIFC CMD RPT	CMD 1	ALL DIV	170.0000	136.5	166.4750	136.5	A		A	SCOTT MOUNTAIN
2 NIFC CMD RPT	CMD 2	ALL DIV	171.4125	136.5	164.4000	136.5	A		A	FAIRVIEW PEAK
3 NIFC CMD RPT	CMD 3	ALL DIV	171.8875	151.4	162.1875	151.4	A		A	CHILCOOT
4 NIFC CMD RPT	CMD 4	ALL DIV	171.5375	151.4	164.8625	151.4	A		A	REYNOLDS BUTTE
5 NIFC CMD RPT	CMD 5	ALL DIV	170.6875	136.5	166.5750	136.5	A		A	TWIN LAKES MOUNTAIN
6 NIFC CMD RPT	CMD 6	ALL DIV	173.0375	136.5	167.3250	136.5	A		A	QUARTZ MOUNTAIN

Function	Channel Name/Turned Radio System Tag/Group	Assignment	KX Freq	N or W	KX Tone/NAC	TX Freq	N or W	Tx Tone/NAC	Mode	Remarks
1 FS REPEATER	FAIRVIEW	IA GROUP	170.5500	103.5	164.8000	173.8	A		A	UMFQUA NORTH FAIRVIEW
2 FS REPEATER	RED BUTTE	IA GROUP	170.5500	103.5	164.8000	179.9	A		A	UMFQUA NORTH RED BUTTE
3 FS REPEATER	CHILCOOT	IA GROUP	170.5500	103.5	164.8000	192.8	A		A	UMFQUA NORTH CHILCOOT
4 FS REPEATER	E DOEHD	IA GROUP	171.4250	103.5	166.0000	184.2	A		A	UMFQUA EAST DOE HEAD
5 FS REPEATER	CINNAMON	IA GROUP	171.4250	103.5	166.0000	192.8	A		A	UMFQUA EAST CINNAMON
6 FS REPEATER	FIG IRON	IA GROUP	171.4250	103.5	166.0000	179.9	A		A	UMFQUA EAST FIG IRON
7 FS REPEATER	PICKETT	IA GROUP	172.3500	103.5	166.2625	192.8	A		A	UMFQUA SOUTH PICKETT
8 FS REPEATER	ACKER	IA GROUP	172.3500	103.5	166.2625	173.8	A		A	UMFQUA SOUTH ACKER
9 FS REPEATER	CEDAR	IA GROUP	172.3500	103.5	166.2625	184.2	A		A </tr	



**Transportation
Rough Patch Complex**
September 24, 2021
Jack Fire: 24,165 Ac
Rough Patch Complex: 50,400 Ac



- Helispot
- Ⓜ Staging Area
- Primary Hwy
- Ⓜ Helibase
- Ⓜ Water Source
- Paved Road
- Ⓜ Division Break
- Ⓜ Repeater
- Gravel Road
- Ⓜ Zone Break
- Ⓜ Contained Line
- Dirt Roads
- Ⓜ Incident Command Post
- Ⓜ Wildfire Daily Fire Perimeter
- Unimproved Roads
- Ⓜ Drop Point
- Ⓜ Paved Roads
- Unspecified
- Ⓜ Camp
- Ⓜ Dirt (Not Paved)
- Closed Roads
- Ⓜ Trail
- Ⓜ National Designated Trail
- BLM
- Ⓜ Wild and Scenic River
- Ⓜ Forest Service Land