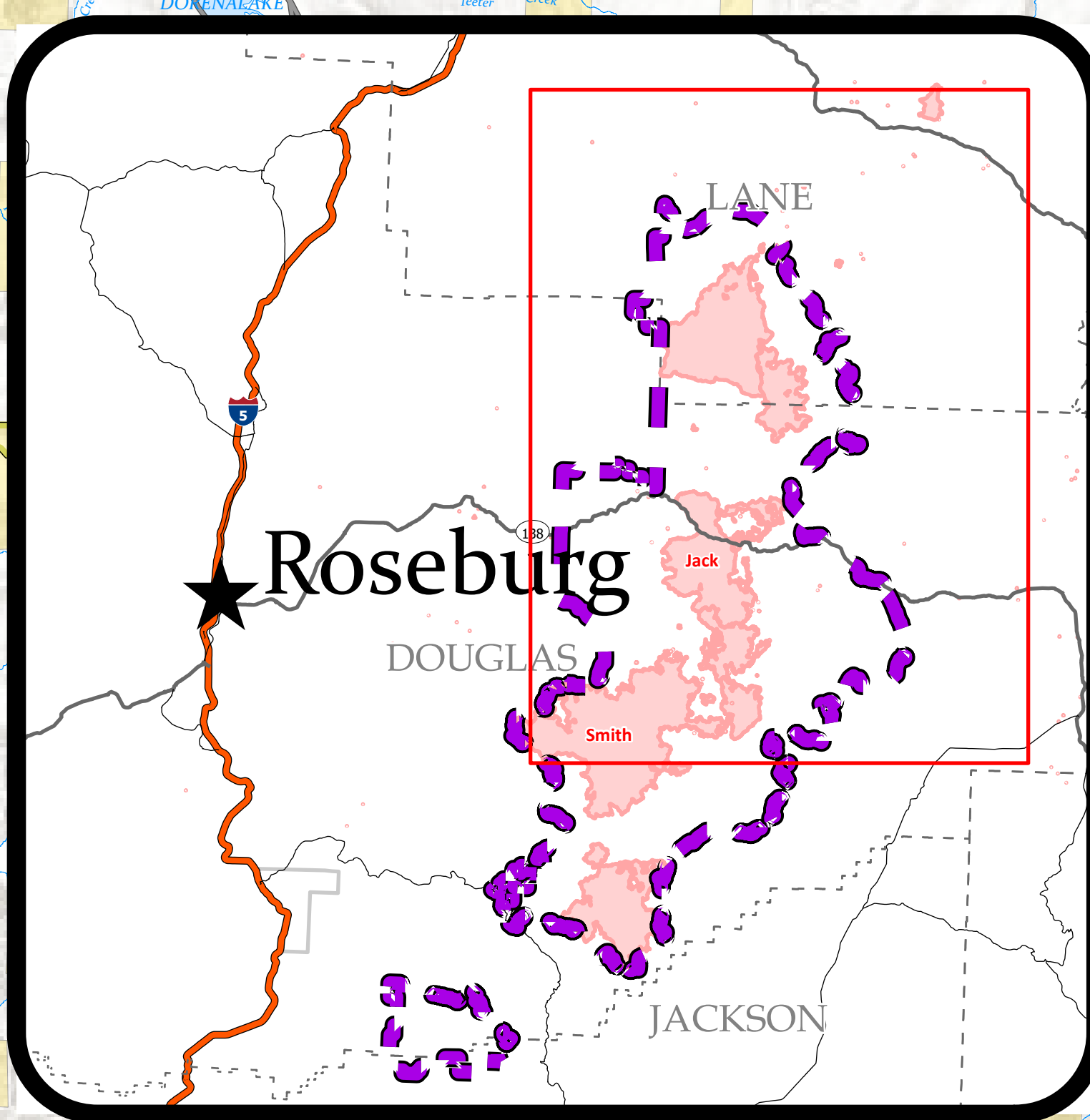


Security

Rough Patch Complex/Jack Fire

September 28, 2021

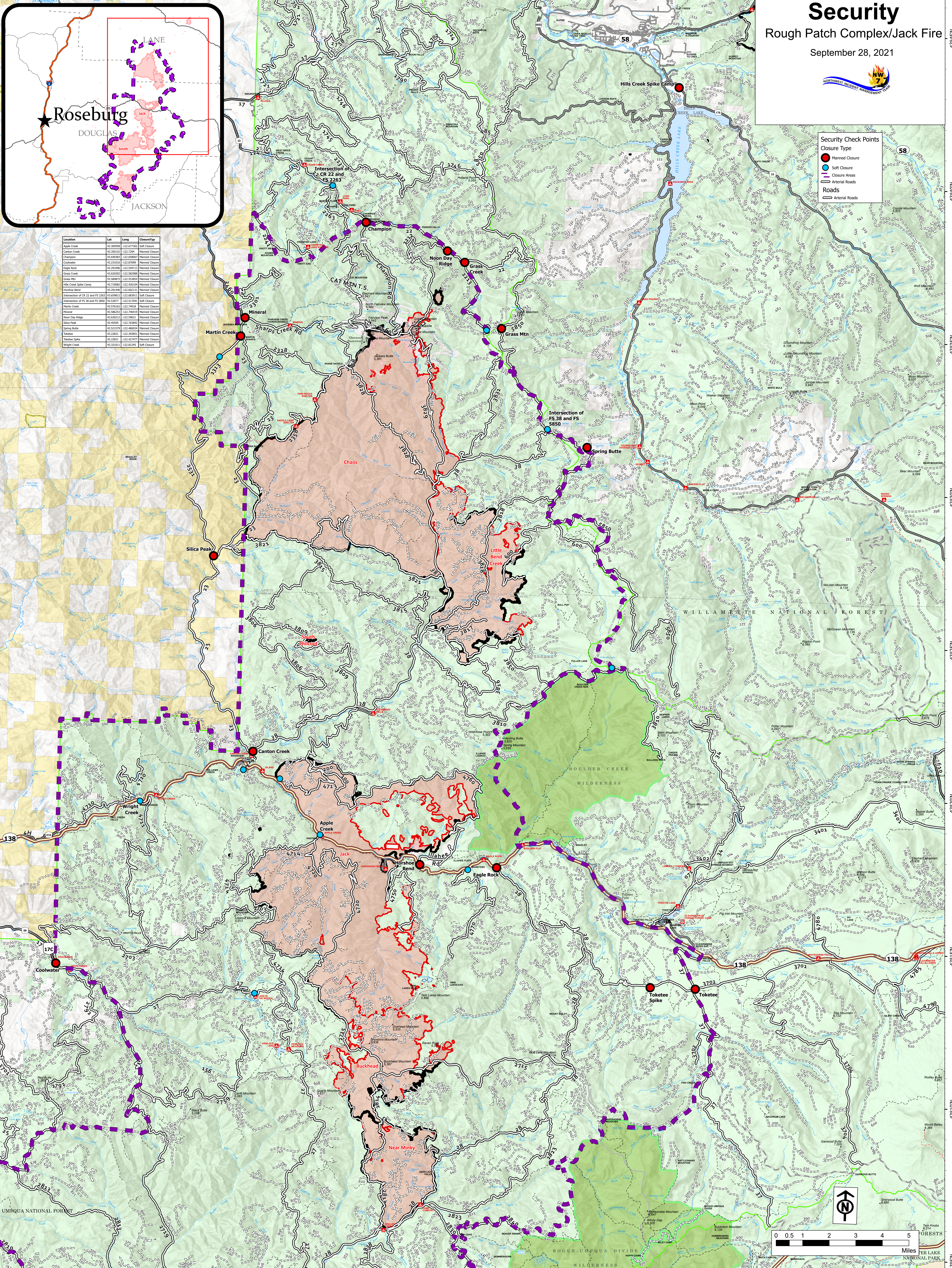
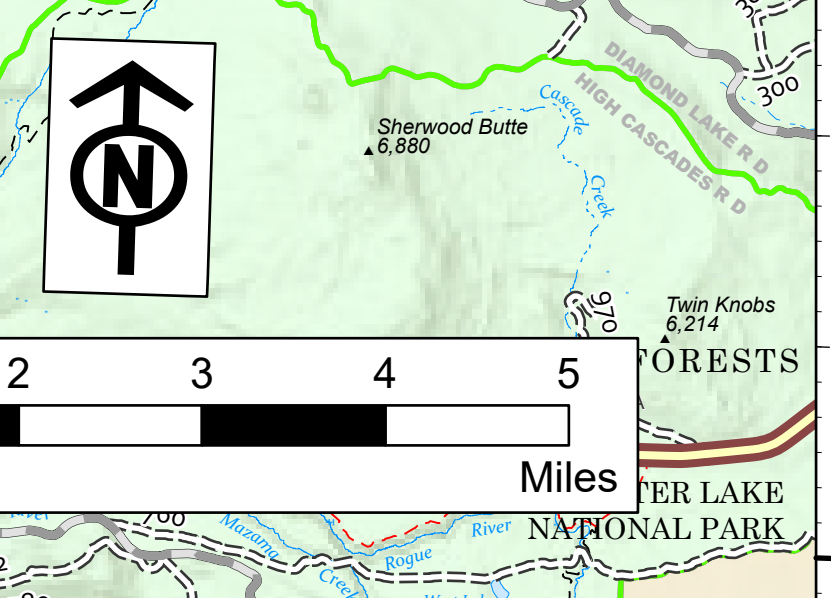
Location	Lat	Long	Closure Type
Apple Creek	43.30599	-122.87702	Soft Closure
Canton Creek	43.36152	-122.7294	Managed Closure
Champion	43.44020	-122.69902	Managed Closure
Coolwater	43.21261	-122.85209	Managed Closure
Eagle Rock	43.20126	-122.54473	Managed Closure
Grass Creek	43.20201	-122.58298	Managed Closure
Grass Mtn	43.24870	-122.52304	Managed Closure
Hills Creek Spike Camp	43.27062	-122.62401	Managed Closure
Horseshoe Bend	43.25144	-122.62133	Managed Closure
Intersection of CR 22 and FS 2263	43.69811	-122.68791	Soft Closure
Intersection of FS 38 and FS 5850	43.12077	-122.51744	Soft Closure
Little Bend Creek	43.21261	-122.74918	Managed Closure
Mineral	43.58253	-122.74643	Managed Closure
Noon Day Ridge	43.62623	-122.59623	Managed Closure
Spring Butte	43.60998	-122.76260	Managed Closure
Talbot	43.21261	-122.48604	Managed Closure
Talbot Spike	43.28261	-122.39161	Managed Closure
Trask Creek	43.28261	-122.42747	Managed Closure
Wright Creek	43.21261	-122.81246	Soft Closure

Security Check Points

- Managed Closure
- Soft Closure
- Closure Areas
- Antennal Roads

Roads

- Roads
- Antennal Roads

0 0.5 1 2 3 4 5 Miles