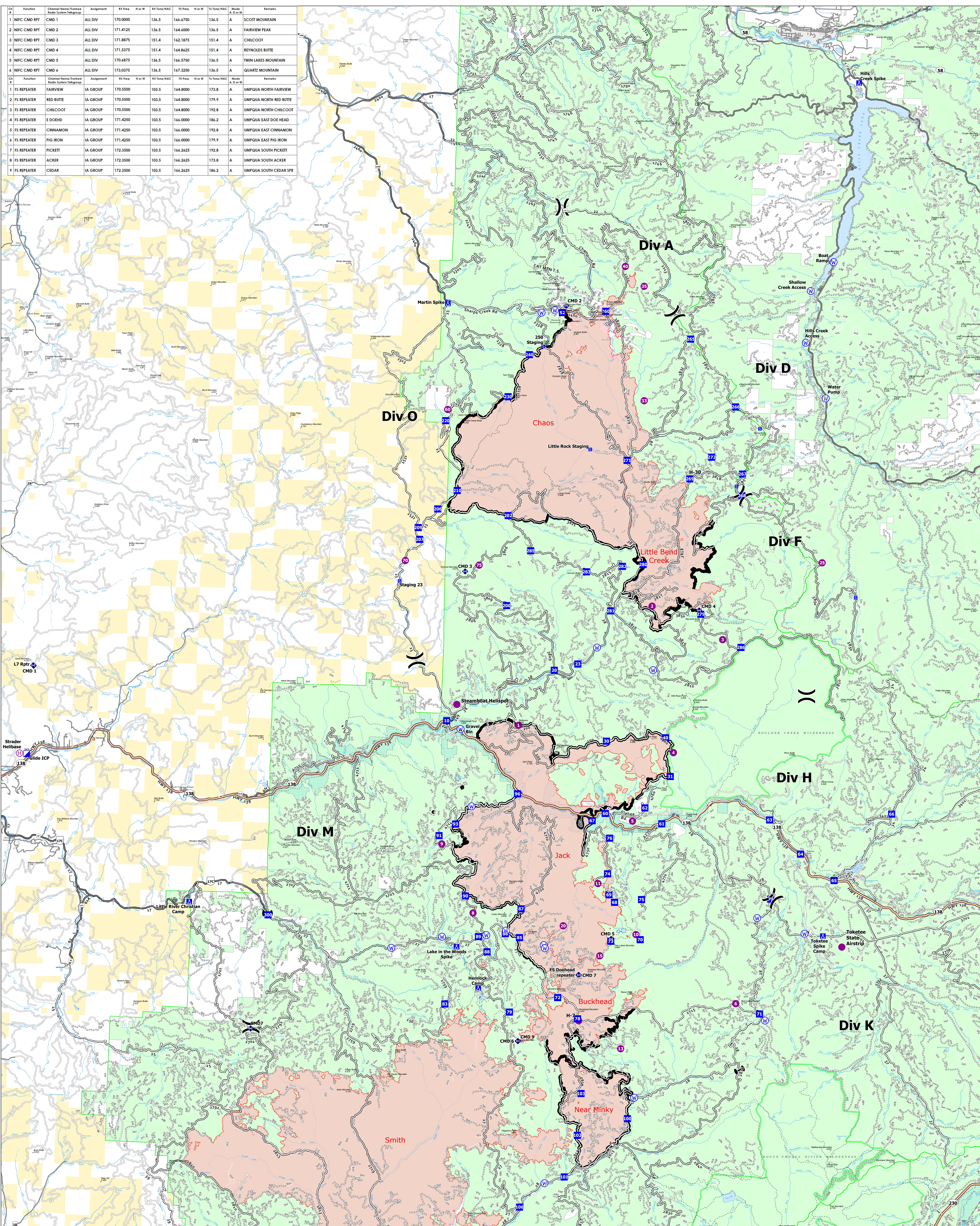
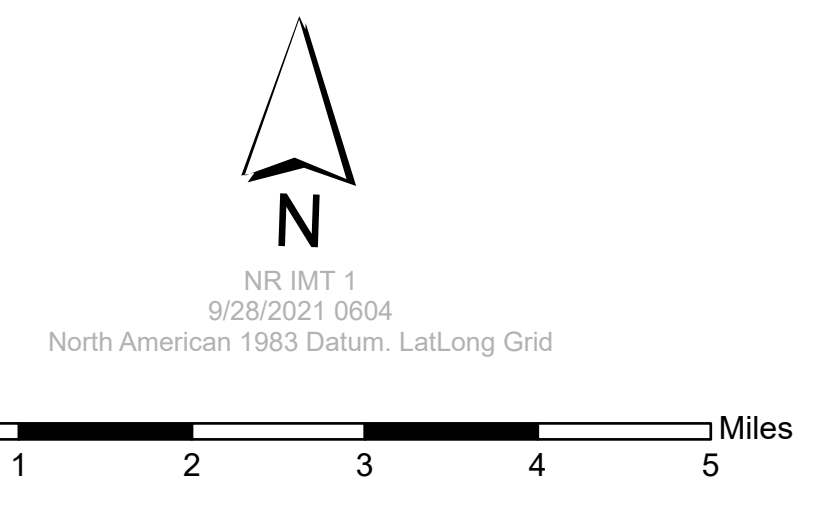


Function	Channel Name/Tuned Radio System Talkgroup	Assignment	RX Freq	N or W	RX Tone/NAC	TX Freq	N or W	TX Tone/NAC	Mode	Remarks
1 NIFC CMD RPT	CMD 1	ALL DIV	170.0000		136.5	166.6750	136.5	A	A	SCOTT MOUNTAIN
2 NIFC CMD RPT	CMD 2	ALL DIV	171.4125		136.5	164.4000	136.5	A	A	FAIRVIEW PEAK
3 NIFC CMD RPT	CMD 3	ALL DIV	171.8875		151.4	162.1875	151.4	A	A	CHILCOOT
4 NIFC CMD RPT	CMD 4	ALL DIV	171.5375		151.4	164.8625	151.4	A	A	REYNOLDS BUTTE
5 NIFC CMD RPT	CMD 5	ALL DIV	170.4875		136.5	166.5750	136.5	A	A	TWIN LAKES MOUNTAIN
6 NIFC CMD RPT	CMD 6	ALL DIV	173.0375		136.5	167.3250	136.5	A	A	QUARTZ MOUNTAIN
1 FS REPEATER	FAIRVIEW	IA GROUP	170.5500		103.5	164.8000	173.8	A	A	UMPUQUA NORTH FAIRVIEW
2 FS REPEATER	RED BUTTE	IA GROUP	170.5500		103.5	164.8000	179.9	A	A	UMPUQUA NORTH RED BUTTE
3 FS REPEATER	CHILCOOT	IA GROUP	170.5500		103.5	164.8000	192.8	A	A	UMPUQUA NORTH CHILCOOT
4 FS REPEATER	E DOEHD	IA GROUP	171.4250		103.5	166.0000	184.2	A	A	UMPUQUA EAST DOE HEAD
5 FS REPEATER	CINNAMON	IA GROUP	171.4250		103.5	166.0000	192.8	A	A	UMPUQUA EAST CINNAMON
6 FS REPEATER	PIG IRON	IA GROUP	171.4250		103.5	166.0000	179.9	A	A	UMPUQUA EAST PIG IRON
7 FS REPEATER	PICKETT	IA GROUP	172.3500		103.5	166.2625	192.8	A	A	UMPUQUA SOUTH PICKETT
8 FS REPEATER	ACKER	IA GROUP	172.3500		103.5	166.2625	173.8	A	A	UMPUQUA SOUTH ACKER
9 FS REPEATER	CEDAR	IA GROUP	172.3500		103.5	166.2625	184.2	A	A	UMPUQUA SOUTH CEDAR SPR



**Transportation  
Rough Patch Complex**  
September 28, 2021  
Jack Fire: 24,165 Ac  
Rough Patch Complex: 50,419 Ac



- Helispot
- Staging Area
- Primary Hwy
- Helibase
- Water Source
- Paved Road
- Division Break
- Repeater
- Gravel Road
- Zone Break
- Contained Line
- Dirt Roads
- Incident Command Post
- Wildfire Daily Fire Perimeter
- Unimproved Roads
- Drop Point
- Paved Roads
- Camp
- Dirt (Not Paved)
- Unspecified
- Closed Roads
- Trail
- National Designated Trail
- BLM
- Wild and Scenic River
- Forest Service Land