

Air Ops Overview

Rough Patch Complex

OR-UPF-000373
October 03, 2021

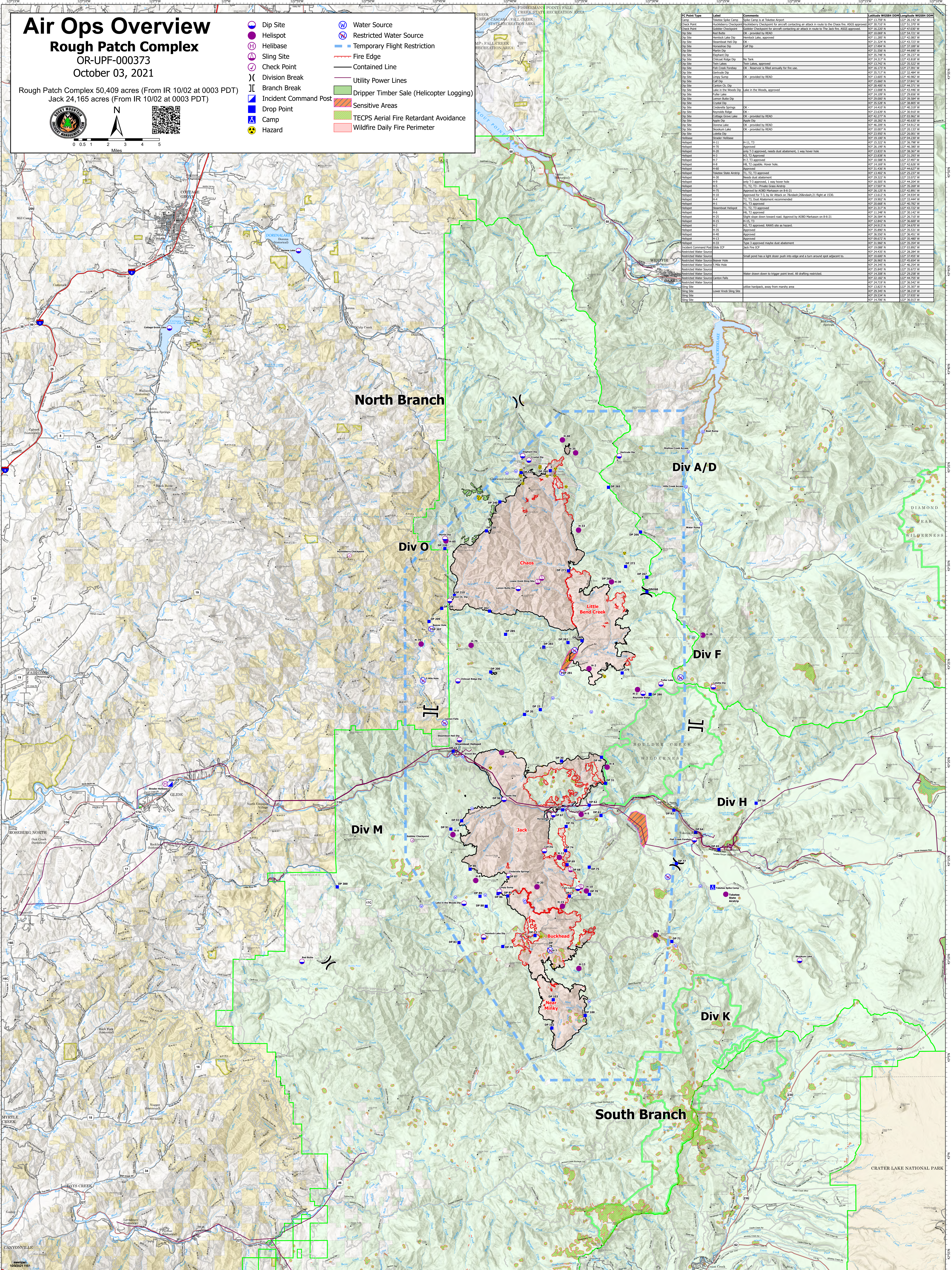
Rough Patch Complex 50,409 acres (From IR 10/02 at 0003 PDT)

Jack 24,165 acres (From IR 10/02 at 0003 PDT)



- Dip Site
- Helispot
- Helibase
- ▲ Sling Site
- Check Point
-) Division Break
- | Branch Break
- Incident Command Post
- ▲ Drop Point
- ▲ Camp
- Hazard
- ⊙ Water Source
- ⊘ Restricted Water Source
- Temporary Flight Restriction
- Fire Edge
- Contained Line
- Utility Power Lines
- Drifter Timber Sale (Helicopter Logging)
- Sensitive Areas
- TECPS Aerial Fire Retardant Avoidance
- Wildfire Daily Fire Perimeter

FC Point Type	Label	Comments	Latitude WGS84 DOM	Longitude WGS84 DOM
Camp	Tobacco Sledge Camp	Sledge Camp is at Tobacco Airport	43° 13.759' N	122° 26.142' W
Check Point	Procedural Checkpoint	Procedural Checkpoint for aircraft controlling air attack in relation to the Chase fire. ADOE approved	43° 20.710' N	122° 31.370' W
Check Point	Subsidiary Checkpoint	Subsidiary Checkpoint for aircraft controlling air attack in relation to the Chase fire. ADOE approved	43° 20.250' N	122° 47.030' W
Drop Point	Red Butte	CR - provided by READ	43° 10.069' N	122° 54.721' W
Drop Point	Harriet Lake Dip	CR - provided by READ	43° 12.850' N	122° 43.230' W
Drop Point	Steamboat Hill Dip	CR - provided by READ	43° 24.324' N	122° 43.723' W
Drop Point	Harriet Dip	CR - provided by READ	43° 17.494' N	122° 37.189' W
Drop Point	Waters Dip	CR - provided by READ	43° 24.556' N	122° 44.009' W
Drop Point	Blushard Dip	CR - provided by READ	43° 35.748' N	122° 39.237' W
Drop Point	Chilcote Ridge Dip	CR - provided by READ	43° 24.313' N	122° 43.723' W
Drop Point	Twin Lakes	Twin Lakes, approved	43° 13.742' N	122° 35.527' W
Drop Point	Paul Creek Forebay	CR - Reservoir is filled annually for the use.	43° 16.172' N	122° 22.911' W
Drop Point	Carton Dip	CR - provided by READ	43° 24.313' N	122° 43.723' W
Drop Point	Lumpy Camp	CR - provided by READ	43° 13.602' N	122° 46.682' W
Drop Point	Carton Dip	CR - provided by READ	43° 24.313' N	122° 43.723' W
Drop Point	Carton CL Dip	CR - provided by READ	43° 24.400' N	122° 44.371' W
Drop Point	Lake in the Woods Dip	Lake in the Woods, approved	43° 11.008' N	122° 43.446' W
Drop Point	Palmer Lake	CR - provided by READ	43° 24.313' N	122° 43.723' W
Drop Point	Lannon Butte Dip	CR - provided by READ	43° 25.000' N	122° 39.584' W
Drop Point	Cypress Dip	CR - provided by READ	43° 24.313' N	122° 43.723' W
Drop Point	Chilcote Springs	CR - provided by READ	43° 14.410' N	122° 40.119' W
Drop Point	Raymond Ridge	CR - provided by READ	43° 23.539' N	122° 39.319' W
Drop Point	Chilcote Ridge Dip	CR - provided by READ	43° 24.272' N	122° 43.982' W
Drop Point	Apple Dip	CR - provided by READ	43° 18.283' N	122° 40.830' W
Drop Point	Porcena Lake	CR - provided by READ	43° 46.209' N	122° 34.612' W
Drop Point	Shoshone Lake	CR - provided by READ	43° 31.500' N	122° 29.319' W
Drop Point	Laletta Dip	CR - provided by READ	43° 23.950' N	122° 26.001' W
Drop Point	Wander Helibase	CR - provided by READ	43° 18.500' N	122° 34.230' W
Helispot	H-11	H-11, H-13	43° 15.322' N	122° 36.798' W
Helispot	H-70	Approved	43° 26.199' N	122° 46.180' W
Helispot	H-20	July 23 approved, needs dust abatement, 1 way hover hole	43° 13.833' N	122° 38.367' W
Helispot	H-13	H-13, T2 Approved	43° 23.838' N	122° 31.297' W
Helispot	H-27	H-27, T2 Approved	43° 25.688' N	122° 37.887' W
Helispot	H-18	H-18, T2 capable, hover hole	43° 14.169' N	122° 42.636' W
Helispot	H-60	Approved	43° 31.438' N	122° 44.637' W
Helispot	Tobacco State Airfield	H-1, T2, T3 approved	43° 13.833' N	122° 38.367' W
Helispot	H-30	Needs dust abatement	43° 29.322' N	122° 33.072' W
Helispot	H-19	July 23 approved, 1 way hover hole	43° 16.522' N	122° 44.204' W
Helispot	H-5	H-1, T2, T3 - Private Grass Airstrip	43° 17.507' N	122° 35.369' W
Helispot	H-75	Approved by ADOE Markson on 8-6-21	43° 26.125' N	122° 42.891' W
Helispot	H-10	Approved for T3 by Air Attack on October 26/Andrei 21 flight at 1530.	43° 14.622' N	122° 39.314' W
Helispot	H-4	H-1, T2, T3, Dust Abatement recommended	43° 19.902' N	122° 33.444' W
Helispot	H-1	Approved	43° 13.833' N	122° 38.367' W
Helispot	Steamboat Helispot	H-1, T2, T3 approved	43° 24.313' N	122° 43.723' W
Helispot	H-5	H-1, T2, T3 approved	43° 11.348' N	122° 30.142' W
Helispot	H-12	July 23 approved, 1 way hover hole	43° 16.522' N	122° 44.204' W
Helispot	H-15	H-15, T3	43° 12.842' N	122° 36.600' W
Helispot	H-35	H-35, T2 approved, 1 way hover hole	43° 24.913' N	122° 34.311' W
Helispot	H-40	Approved	43° 36.550' N	122° 36.451' W
Helispot	H-13	Approved	43° 13.833' N	122° 38.367' W
Helispot	H-33	Type 3 approved maybe dust abatement	43° 31.900' N	122° 35.354' W
Drop Point	Incident Command Post (ICP)	Jack Fire ICP	43° 24.088' N	122° 03.802' W
Drop Point	Restricted Water Source	Jack Fire ICP	43° 24.088' N	122° 03.802' W
Drop Point	Restricted Water Source	Small pond has a light clear push into edge and a turn around spot adjacent to:	43° 23.657' N	122° 37.657' W
Drop Point	Restricted Water Source	1 Mile hole	43° 24.345' N	122° 46.254' W
Drop Point	Restricted Water Source	Water down down to trigger point level. All drafting restricted.	43° 25.845' N	122° 35.072' W
Drop Point	Restricted Water Source	Carton Falls	43° 23.182' N	122° 44.759' W
Drop Point	Restricted Water Source	Carton Falls	43° 23.182' N	122° 44.759' W
Drop Point	Sling Site	Salix hardpack, away from marshy area	43° 13.833' N	122° 38.367' W
Drop Point	Sling Site	Lower Kribb Sling Site	43° 20.345' N	122° 38.219' W
Drop Point	Sling Site	Lower Kribb Sling Site	43° 20.345' N	122° 38.219' W
Drop Point	Sling Site	Lower Kribb Sling Site	43° 14.706' N	122° 36.013' W



North Branch

Div O

Div A/D

Div F

Div H

Div K

Div M

South Branch

Chaos

Little Bend Creek

Jack

Buckhead

Mink

CRATER LAKE NATIONAL PARK