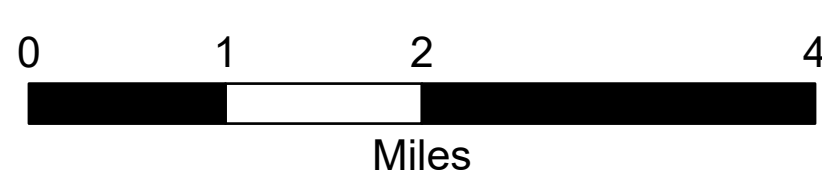
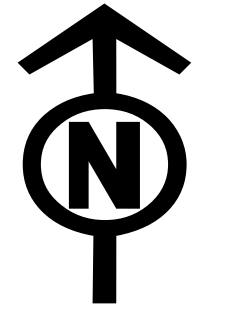
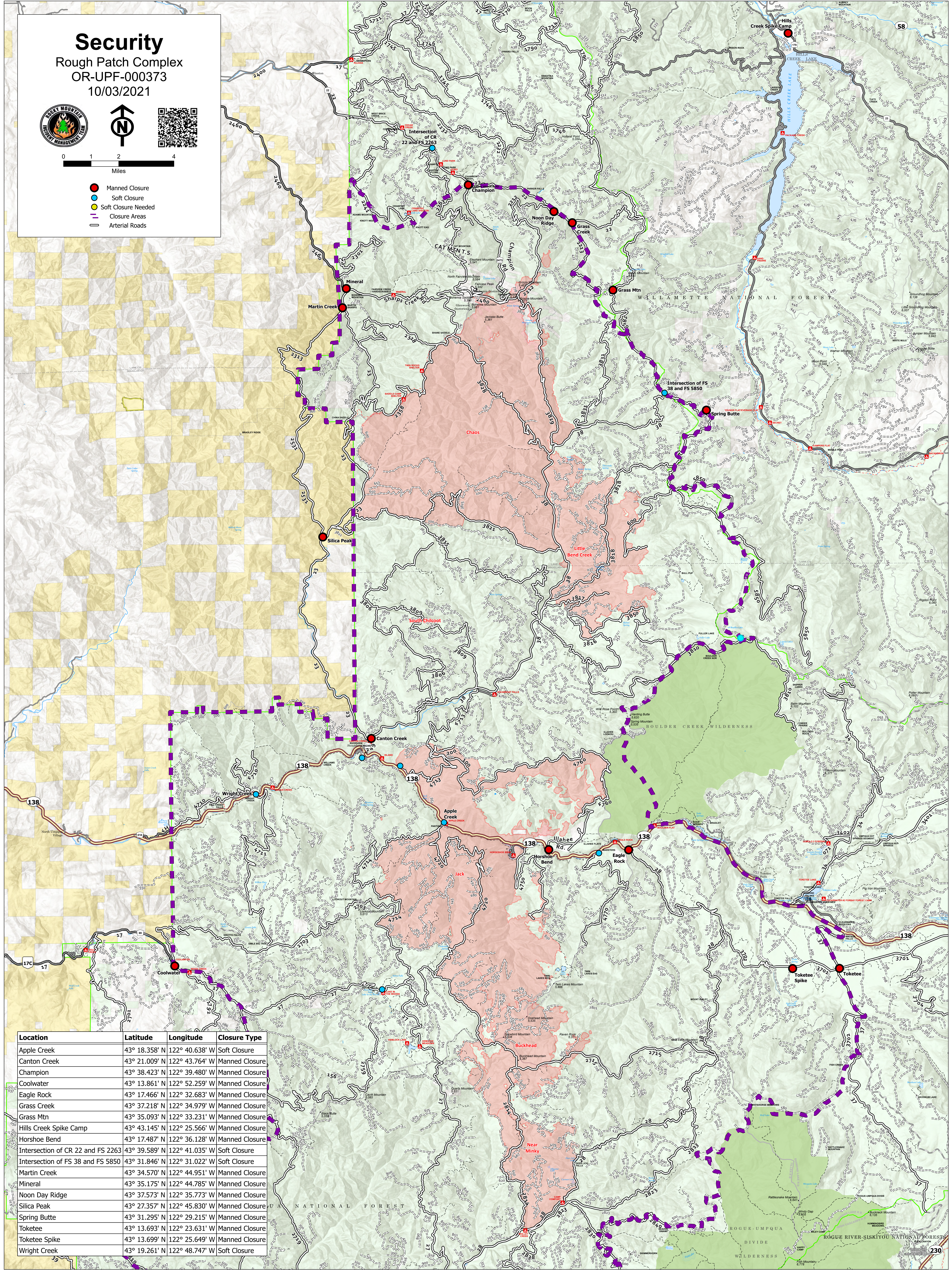


Security

Rough Patch Complex
OR-UPF-000373
10/03/2021



- Manned Closure
- Soft Closure
- Soft Closure Needed
- Closure Areas
- Arterial Roads



Location	Latitude	Longitude	Closure Type
Apple Creek	43° 18.358' N	122° 40.638' W	Soft Closure
Canton Creek	43° 21.009' N	122° 43.764' W	Manned Closure
Champion	43° 38.423' N	122° 39.480' W	Manned Closure
Coolwater	43° 13.861' N	122° 52.259' W	Manned Closure
Eagle Rock	43° 17.466' N	122° 32.683' W	Manned Closure
Grass Creek	43° 37.218' N	122° 34.979' W	Manned Closure
Grass Mtn	43° 35.093' N	122° 33.231' W	Manned Closure
Hills Creek Spike Camp	43° 43.145' N	122° 25.566' W	Manned Closure
Horshoe Bend	43° 17.487' N	122° 36.128' W	Manned Closure
Intersection of CR 22 and FS 2263	43° 39.589' N	122° 41.035' W	Soft Closure
Intersection of FS 38 and FS 5850	43° 31.846' N	122° 31.022' W	Soft Closure
Martin Creek	43° 34.570' N	122° 44.951' W	Manned Closure
Mineral	43° 35.175' N	122° 44.785' W	Manned Closure
Noon Day Ridge	43° 37.573' N	122° 35.773' W	Manned Closure
Silica Peak	43° 27.357' N	122° 45.830' W	Manned Closure
Spring Butte	43° 31.295' N	122° 29.215' W	Manned Closure
Toketee	43° 13.693' N	122° 23.631' W	Manned Closure
Toketee Spike	43° 13.699' N	122° 25.649' W	Manned Closure
Wright Creek	43° 19.261' N	122° 48.747' W	Soft Closure