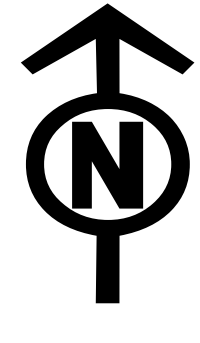


# Transportation

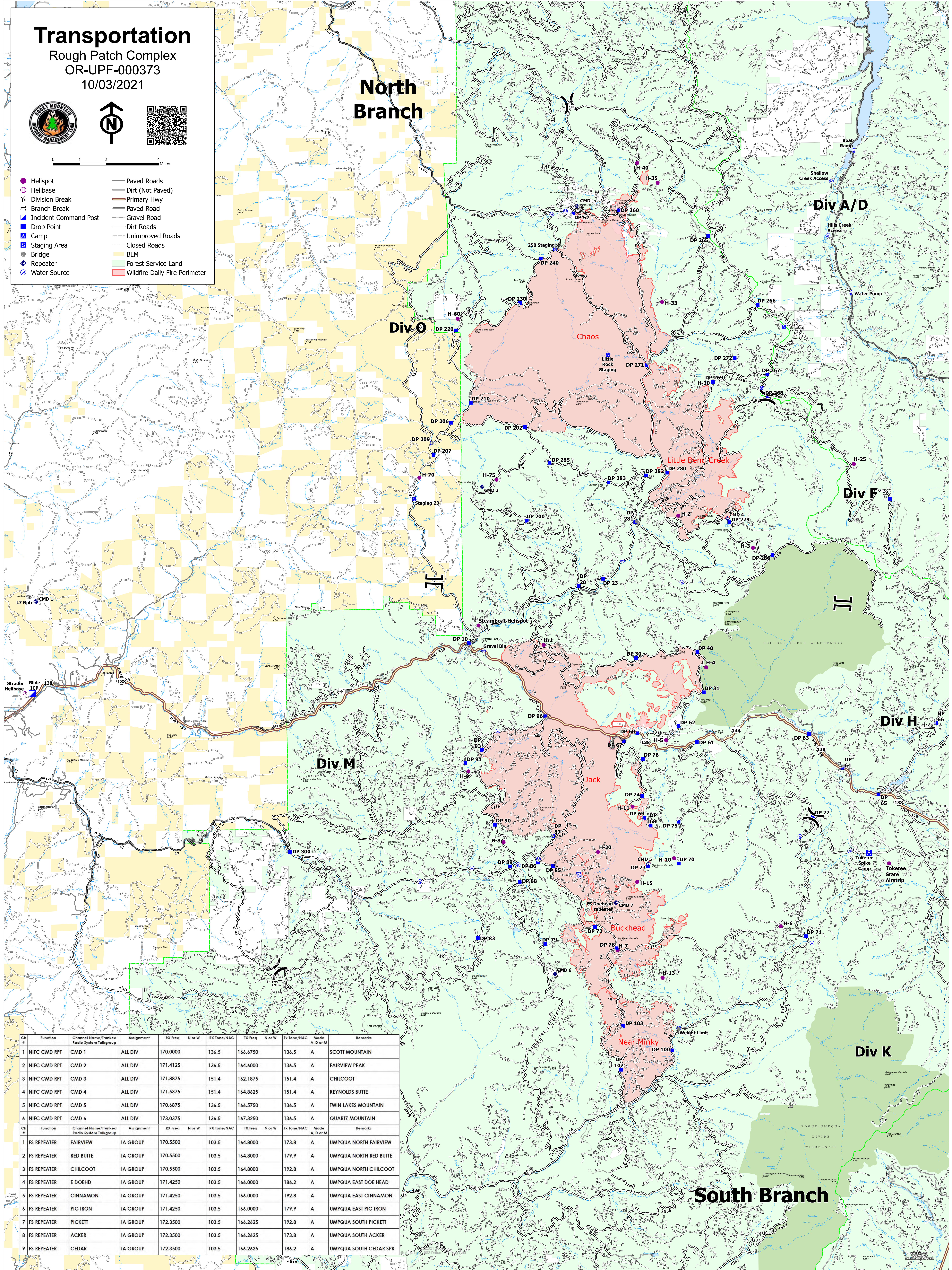
Rough Patch Complex  
OR-UPF-000373

10/03/2021



0 1 2 4 Miles

- Helispot
- ⊕ Helibase
- ⌋ Division Break
- ⌋ Branch Break
- ⌋ Incident Command Post
- Drop Point
- ⊠ Camp
- ⊠ Staging Area
- ⊠ Bridge
- ⊠ Repeater
- ⊠ Water Source
- Paved Roads
- Dirt (Not Paved)
- Primary Hwy
- Paved Road
- Gravel Road
- Dirt Roads
- Unimproved Roads
- Closed Roads
- BLM
- Forest Service Land
- Wildfire Daily Fire Perimeter



Ch #	Function	Channel Name/Trunked Radio System Talkgroup	Assignment	RX Freq	N or W	RX Tone/NAC	TX Freq	N or W	TX Tone/NAC	Mode	A, D or M	Remarks
1	NIFC CMD RPT	CMD 1	ALL DIV	170.0000		136.5	166.6750		136.5	A		SCOTT MOUNTAIN
2	NIFC CMD RPT	CMD 2	ALL DIV	171.4125		136.5	164.6000		136.5	A		FAIRVIEW PEAK
3	NIFC CMD RPT	CMD 3	ALL DIV	171.8875		151.4	162.1875		151.4	A		CHILCOOT
4	NIFC CMD RPT	CMD 4	ALL DIV	171.5375		151.4	164.8625		151.4	A		REYNOLDS BUTTE
5	NIFC CMD RPT	CMD 5	ALL DIV	170.6875		136.5	166.5750		136.5	A		TWIN LAKES MOUNTAIN
6	NIFC CMD RPT	CMD 6	ALL DIV	173.0375		136.5	167.3250		136.5	A		QUARTZ MOUNTAIN
Ch #	Function	Channel Name/Trunked Radio System Talkgroup	Assignment	RX Freq	N or W	RX Tone/NAC	TX Freq	N or W	TX Tone/NAC	Mode	A, D or M	Remarks
1	FS REPEATER	FAIRVIEW	IA GROUP	170.5500		103.5	164.8000		173.8	A		UMPQUA NORTH FAIRVIEW
2	FS REPEATER	RED BUTTE	IA GROUP	170.5500		103.5	164.8000		179.9	A		UMPQUA NORTH RED BUTTE
3	FS REPEATER	CHILCOOT	IA GROUP	170.5500		103.5	164.8000		192.8	A		UMPQUA NORTH CHILCOOT
4	FS REPEATER	E DOEHD	IA GROUP	171.4250		103.5	166.0000		186.2	A		UMPQUA EAST DOE HEAD
5	FS REPEATER	CINNAMON	IA GROUP	171.4250		103.5	166.0000		192.8	A		UMPQUA EAST CINNAMON
6	FS REPEATER	PIG IRON	IA GROUP	171.4250		103.5	166.0000		179.9	A		UMPQUA EAST PIG IRON
7	FS REPEATER	PICKETT	IA GROUP	172.3500		103.5	166.2625		192.8	A		UMPQUA SOUTH PICKETT
8	FS REPEATER	ACKER	IA GROUP	172.3500		103.5	166.2625		173.8	A		UMPQUA SOUTH ACKER
9	FS REPEATER	CEDAR	IA GROUP	172.3500		103.5	166.2625		186.2	A		UMPQUA SOUTH CEDAR SPR

South Branch