

Priority Repair - South Rough Patch Complex

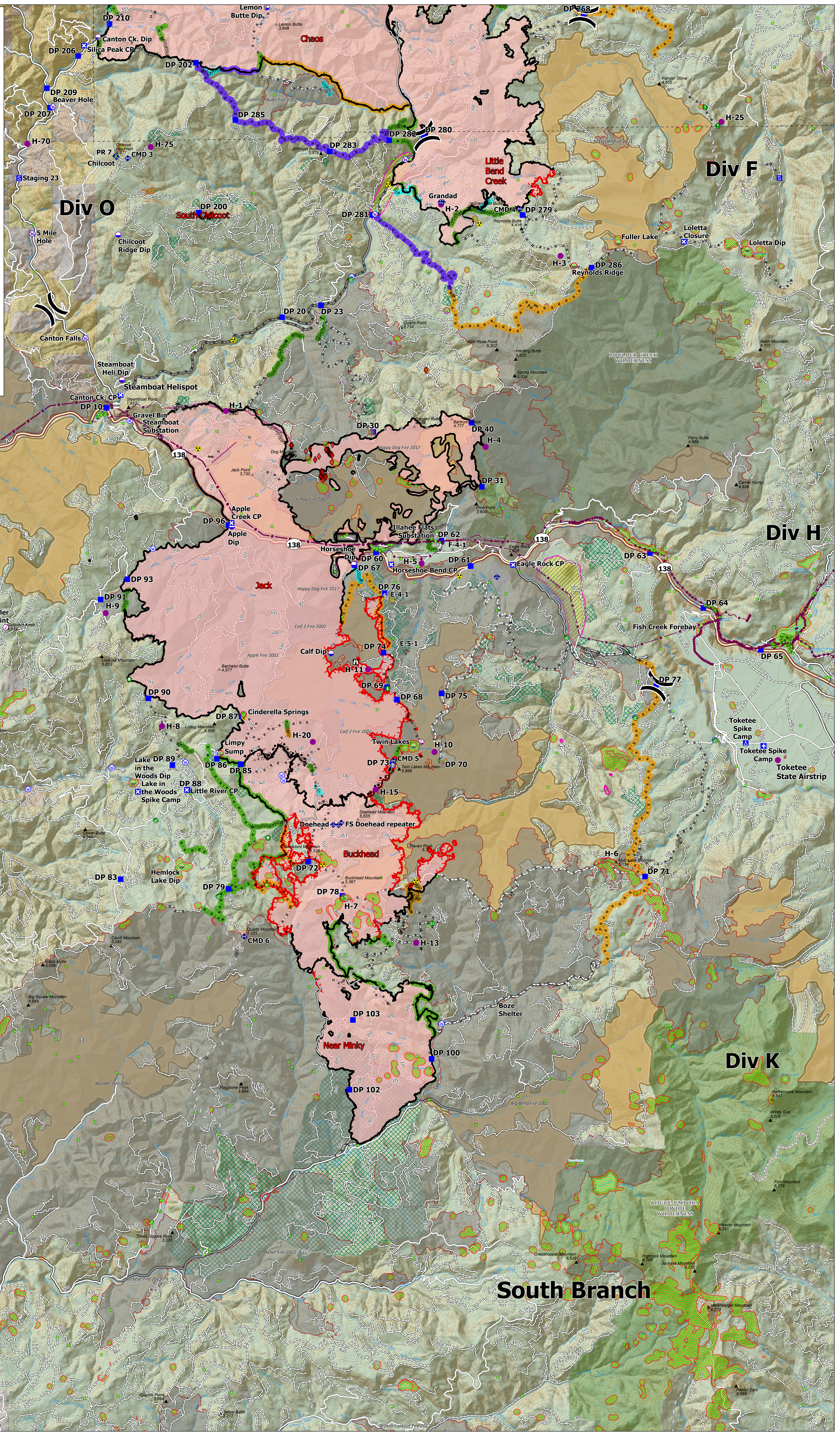
October 06, 2021

Rough Patch Complex: 50,409 ac (Acres from IR 10/02)
Jack: 24,165 ac (Acres from IR 10/02)



0 0.5 1 2 3 Miles

- Adits
- Structures
- Area To Protect
- Check Point (RB)
- Dip Site
- Helispot
- Sling Site
- Division Break
- Medical
- Drop Point
- Closure
- Camp
- Staging Area
- Lookout
- Value at Risk
- Other
- Water Development or Draft Site
- Structure Wrap
- Stream Crossing
- Retardant in Avoidance Area
- Resource Location
- Hazard Tree
- Water Source
- Restricted Water Source
- Completed Burnout
- Completed Doser Line
- Completed Hand Line
- M - Completed Mixed Construction Line
- R - Completed Road as Line
- Access or Improved Road
- Fire Edge
- Contained Line
- Retardant Drop
- Utility Power Lines
- Paved Road
- Gravel Road
- Dirt Road
- Unimproved Roads
- Closed Roads
- READ Priority: Ditch Slash
- READ Priority: Dozer
- READ Priority: Handline
- READ Priority: Log
- READ Priority: Completed - Inspected
- 7 County Boundary
- Area To Protect
- Aerial Fire Retardant Avoidance Areas
- Sensitive Areas
- Timber Sales
- Roadless Areas
- Fire History (20 Years)
- Wildfire Daily Fire Perimeter
- Wilderness
- Forest Service Land
- Regional BLM Own
- BLM
- Private



South Branch