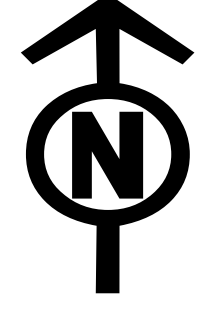


# Transportation

Rough Patch Complex

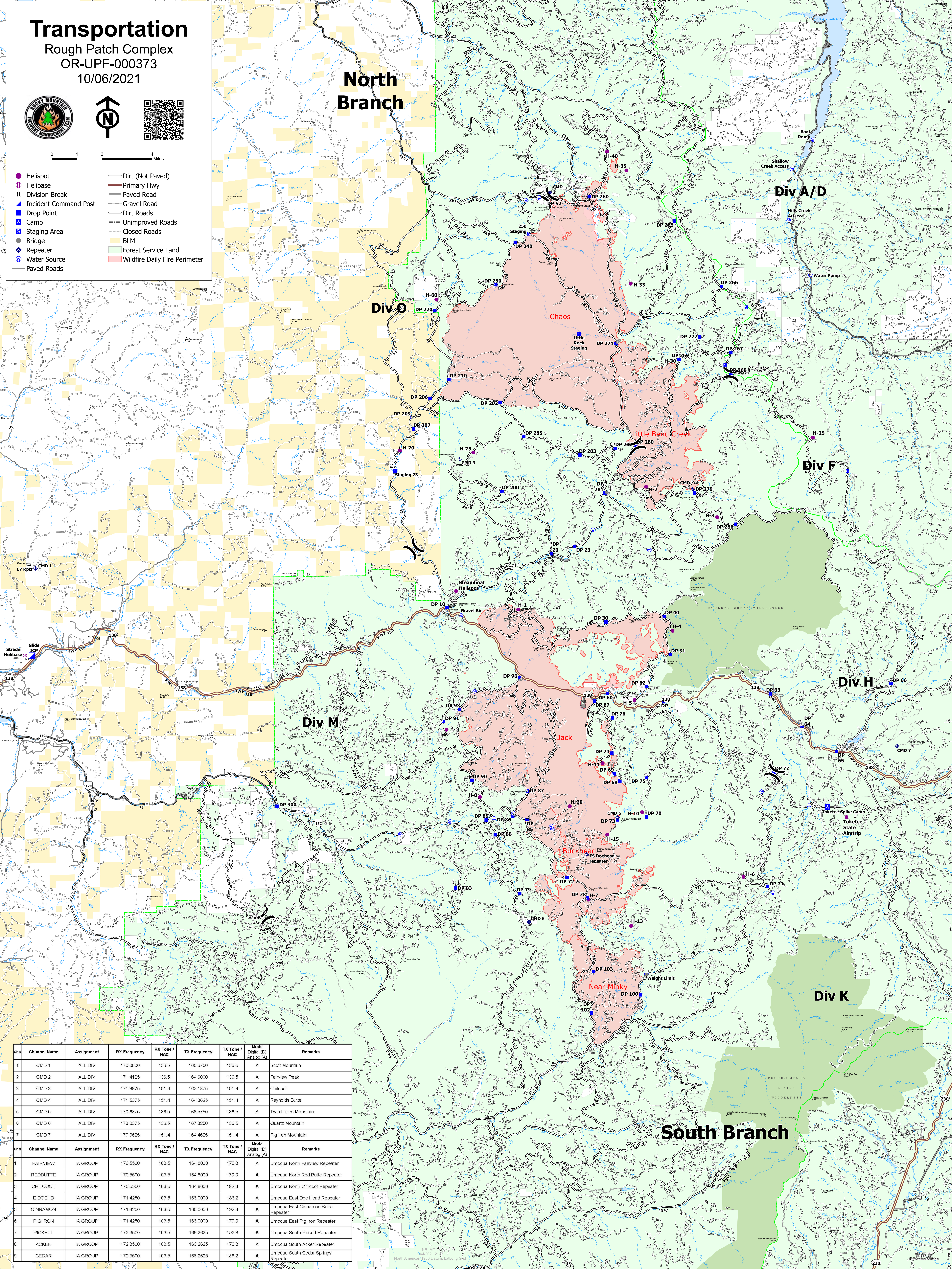
OR-UPF-000373

10/06/2021



0 1 2 4 Miles

- Helispot
- ⊕ Helibase
- | Division Break
- Incident Command Post
- Drop Point
- Camp
- Staging Area
- Bridge
- Repeater
- Water Source
- Paved Roads
- Dirt (Not Paved)
- Primary Hwy
- Paved Road
- Gravel Road
- Dirt Roads
- Unimproved Roads
- Closed Roads
- BLM
- Forest Service Land
- Wildfire Daily Fire Perimeter



Ch#	Channel Name	Assignment	RX Frequency	RX Tone / NAC	TX Frequency	TX Tone / NAC	Mode	Remarks
1	CMD 1	ALL DIV	170.0000	136.5	166.6750	136.5	A	Scott Mountain
2	CMD 2	ALL DIV	171.4125	136.5	164.6000	136.5	A	Fairview Peak
3	CMD 3	ALL DIV	171.8875	151.4	162.1875	151.4	A	Chilcoot
4	CMD 4	ALL DIV	171.5375	151.4	164.8625	151.4	A	Reynolds Butte
5	CMD 5	ALL DIV	170.6875	136.5	166.6750	136.5	A	Twin Lakes Mountain
6	CMD 6	ALL DIV	173.0375	136.5	167.3250	136.5	A	Quartz Mountain
7	CMD 7	ALL DIV	170.0625	151.4	164.4625	151.4	A	Pig Iron Mountain
Ch#	Channel Name	Assignment	RX Frequency	RX Tone / NAC	TX Frequency	TX Tone / NAC	Mode	Remarks
1	FAIRVIEW	IA GROUP	170.5500	103.5	164.8000	173.8	A	Umpqua North Fairview Repeater
2	REDBUTTE	IA GROUP	170.5500	103.5	164.8000	179.9	A	Umpqua North Red Butte Repeater
3	CHILCOOT	IA GROUP	170.5500	103.5	164.8000	192.8	A	Umpqua North Chilcoot Repeater
4	E DOEHD	IA GROUP	171.4250	103.5	166.0000	186.2	A	Umpqua East Doe Head Repeater
5	CINNAMON	IA GROUP	171.4250	103.5	166.0000	192.8	A	Umpqua East Cinnamon Butte Repeater
6	PIG IRON	IA GROUP	171.4250	103.5	166.0000	179.9	A	Umpqua East Pig Iron Repeater
7	PICKETT	IA GROUP	172.3500	103.5	166.2625	192.8	A	Umpqua South Pickett Repeater
8	ACKER	IA GROUP	172.3500	103.5	166.2625	173.8	A	Umpqua South Acker Repeater
9	CEDAR	IA GROUP	172.3500	103.5	166.2625	186.2	A	Umpqua South Cedar Springs Repeater