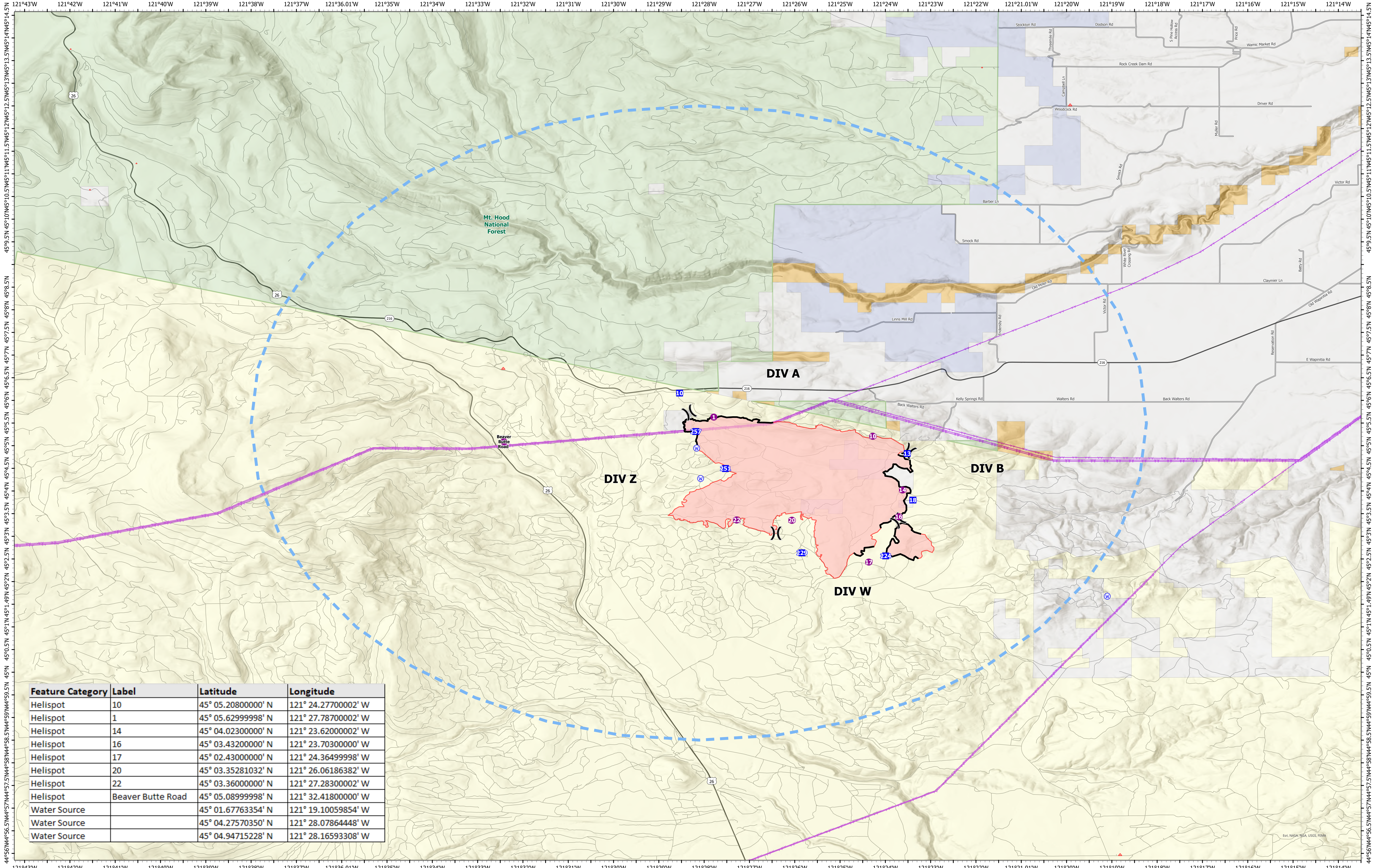


# Air Operations

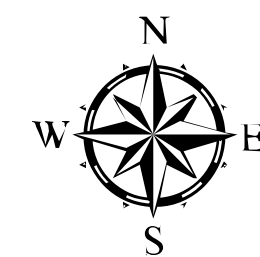


Feature Category	Label	Latitude	Longitude
Helispot	10	45° 05.20800000' N	121° 24.27700002' W
Helispot	1	45° 05.62999998' N	121° 27.78700002' W
Helispot	14	45° 04.02300000' N	121° 23.62000002' W
Helispot	16	45° 03.43200000' N	121° 23.70300000' W
Helispot	17	45° 02.43000000' N	121° 24.36499998' W
Helispot	20	45° 03.35281032' N	121° 26.06186382' W
Helispot	22	45° 03.36000000' N	121° 27.28300002' W
Helispot	Beaver Butte Road	45° 05.08999998' N	121° 32.41800000' W
Water Source		45° 01.67763354' N	121° 19.10059854' W
Water Source		45° 04.27570350' N	121° 28.07864448' W
Water Source		45° 04.94715228' N	121° 28.16593308' W

**S-503**  
**ORWSA-000026**

Fire Perimeter as of 6/23/2021 - 0529:  
 6,679 acres

Map Updated: 6/23/2021 @ 2316



- Drop Point
- Helispot
- ( ) Division Break
- W Water Source
- Temporary Flight Restriction
- Contained Line
- Electric Power Transmission Lines
- Highways
- County Road
- Other Roads
- Administrative Forest
- Bureau of Indian Affairs
- Bureau of Land Management
- U.S. Forest Service
- State Land
- Other Land, Including Private

