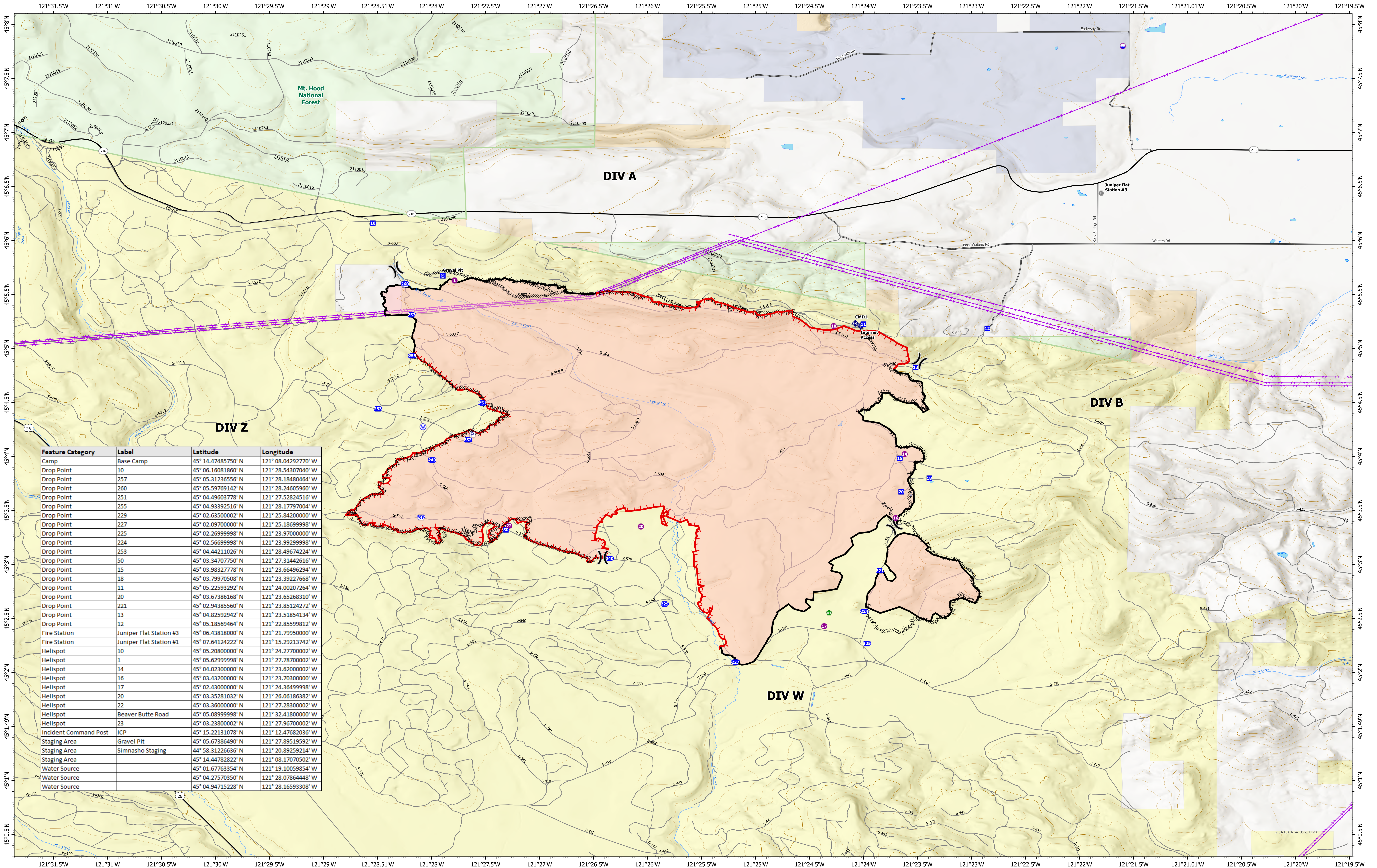


Commo

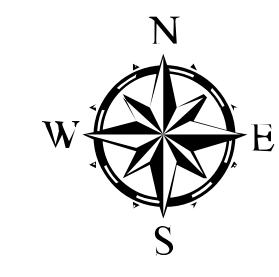


Feature Category	Label	Latitude	Longitude
Camp	Base Camp	45° 14.47485750' N	121° 08.04292770' W
Drop Point	10	45° 06.16081860' N	121° 28.54307040' W
Drop Point	257	45° 05.31236556' N	121° 28.18480464' W
Drop Point	260	45° 05.59769142' N	121° 28.24605960' W
Drop Point	251	45° 04.49603778' N	121° 27.52824516' W
Drop Point	255	45° 04.93392516' N	121° 28.17797004' W
Drop Point	229	45° 02.63500002' N	121° 25.84200000' W
Drop Point	227	45° 02.09700000' N	121° 25.18699998' W
Drop Point	225	45° 02.26999998' N	121° 23.97000000' W
Drop Point	224	45° 02.56699998' N	121° 23.99299998' W
Drop Point	253	45° 04.44211026' N	121° 28.49674224' W
Drop Point	50	45° 03.34707750' N	121° 27.31442616' W
Drop Point	15	45° 03.98327778' N	121° 23.66496294' W
Drop Point	18	45° 03.79970508' N	121° 23.39227668' W
Drop Point	11	45° 05.22593292' N	121° 24.00207264' W
Drop Point	20	45° 03.67386168' N	121° 23.65268310' W
Drop Point	221	45° 02.94385560' N	121° 23.85124272' W
Drop Point	13	45° 04.82592942' N	121° 23.51854134' W
Drop Point	12	45° 05.18569464' N	121° 22.85599812' W
Fire Station	Juniper Flat Station #3	45° 06.43818000' N	121° 21.79950000' W
Fire Station	Juniper Flat Station #1	45° 07.64124222' N	121° 15.29213742' W
Helispot	10	45° 05.20800000' N	121° 24.27700002' W
Helispot	1	45° 05.62999998' N	121° 27.78700002' W
Helispot	14	45° 04.02300000' N	121° 23.62000002' W
Helispot	16	45° 03.43200000' N	121° 23.70300000' W
Helispot	17	45° 02.43000000' N	121° 24.36499998' W
Helispot	20	45° 03.35281032' N	121° 26.06186382' W
Helispot	22	45° 03.36000000' N	121° 27.28300002' W
Helispot	Beaver Butte Road	45° 05.08999998' N	121° 32.41800000' W
Helispot	23	45° 03.23800002' N	121° 27.96700002' W
Incident Command Post	ICP	45° 15.22131078' N	121° 12.47682036' W
Staging Area	Gravel Pit	45° 05.67386490' N	121° 27.89519592' W
Staging Area	Simnasho Staging	44° 58.31226636' N	121° 20.89259214' W
Staging Area		45° 14.44782822' N	121° 08.17070502' W
Water Source		45° 01.67763354' N	121° 19.10059854' W
Water Source		45° 04.27570350' N	121° 28.07864448' W
Water Source		45° 04.94715228' N	121° 28.16593308' W

S-503
ORWSA-000026

Fire Perimeter as of 6/24/2021 @ 2235:
6,679 acres

Map Updated: 6/25/2021 @ 2233



- Dip Site
- Fire Station
- Completed Dozer Line
- Highways
- Bureau of Land Management
- Helispot
- Fence - Cut/Damaged
- Completed Hand Line
- County Road
- Division Break
- Internet Access
- Fire Edge
- Other Roads
- Drop Point
- Repeater
- Contained Line
- Administrative Forest
- Staging Area
- Water Source
- Electric Power Transmission Lines
- U.S. Forest Service
- Bureau of Indian Affairs
- State Land
- Other Land, Including Private

