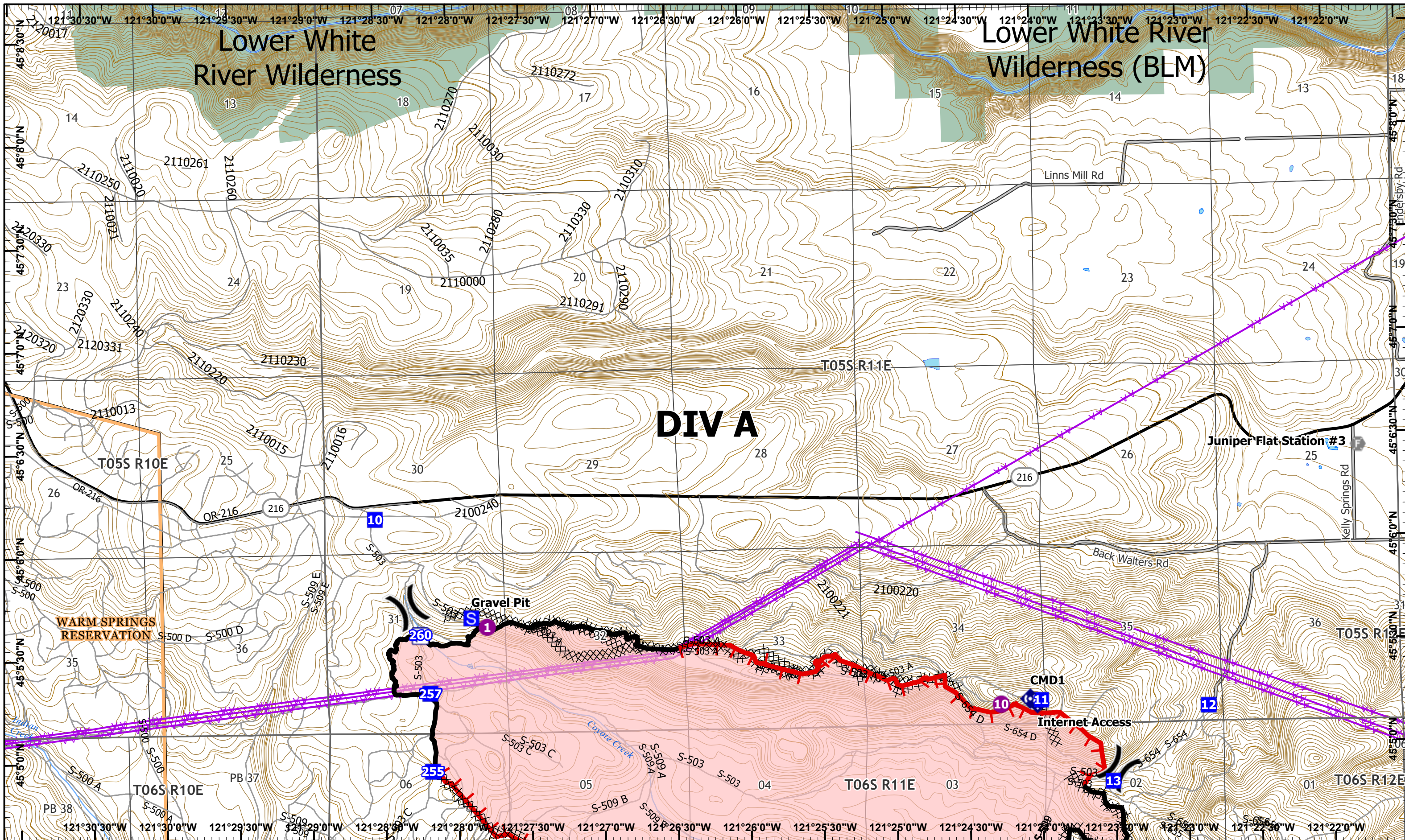


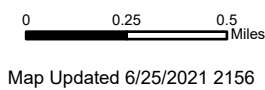
Lower White River Wilderness

Lower White River Wilderness (BLM)

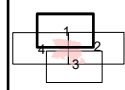
DIV A

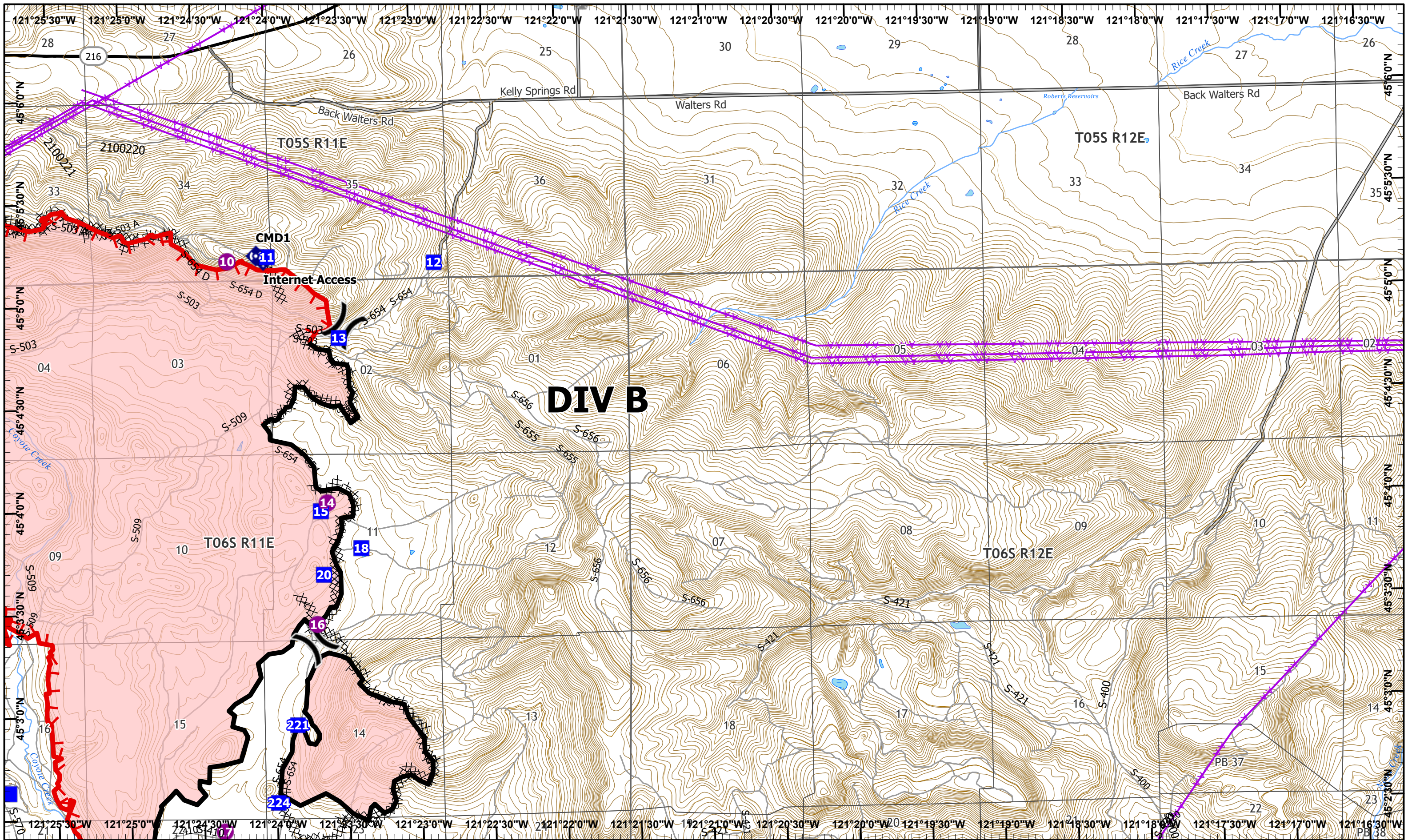


S-503
IAP Map
 Day Operational Period 6/26/2021

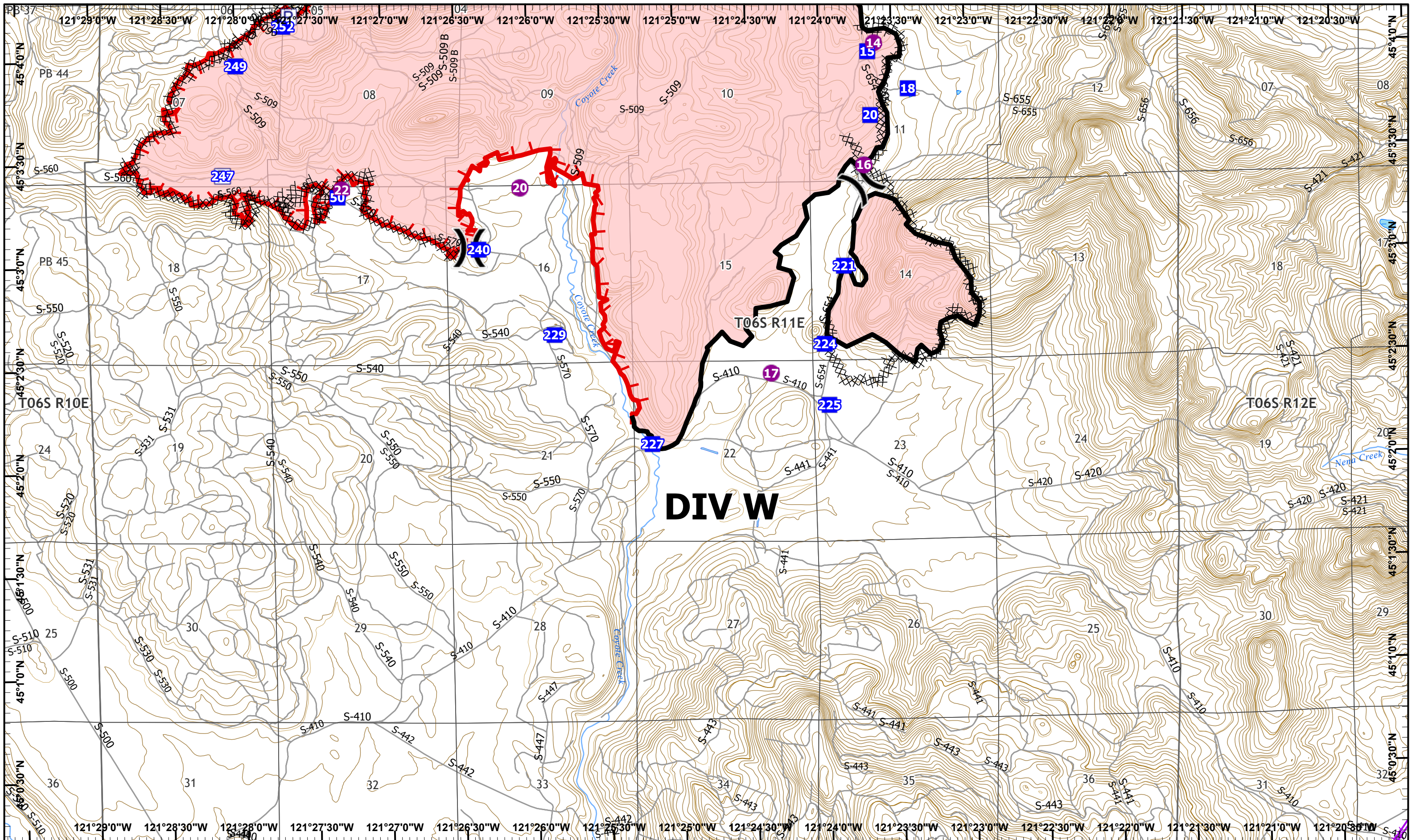


- | | | | | | |
|------------------|-------------------|-------------------------|------------------|-------------------------------------|---------------|
| ● Helispot | Ⓢ Staging Area | ⬢ Repeater | ▬ Fire Edge | ⚡ Electric Power Transmission Lines | — FS Roads |
|) Division Break | ⦿ Fire Station | ⓧ Completed Dozer Line | ▬ Contained Line | — Roads Warm Springs | — Other Roads |
| ■ Drop Point | ⦿ Internet Access | H - Completed Hand Line | ▬ Wilderness | ▬ Highways | — County Road |

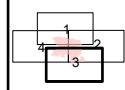


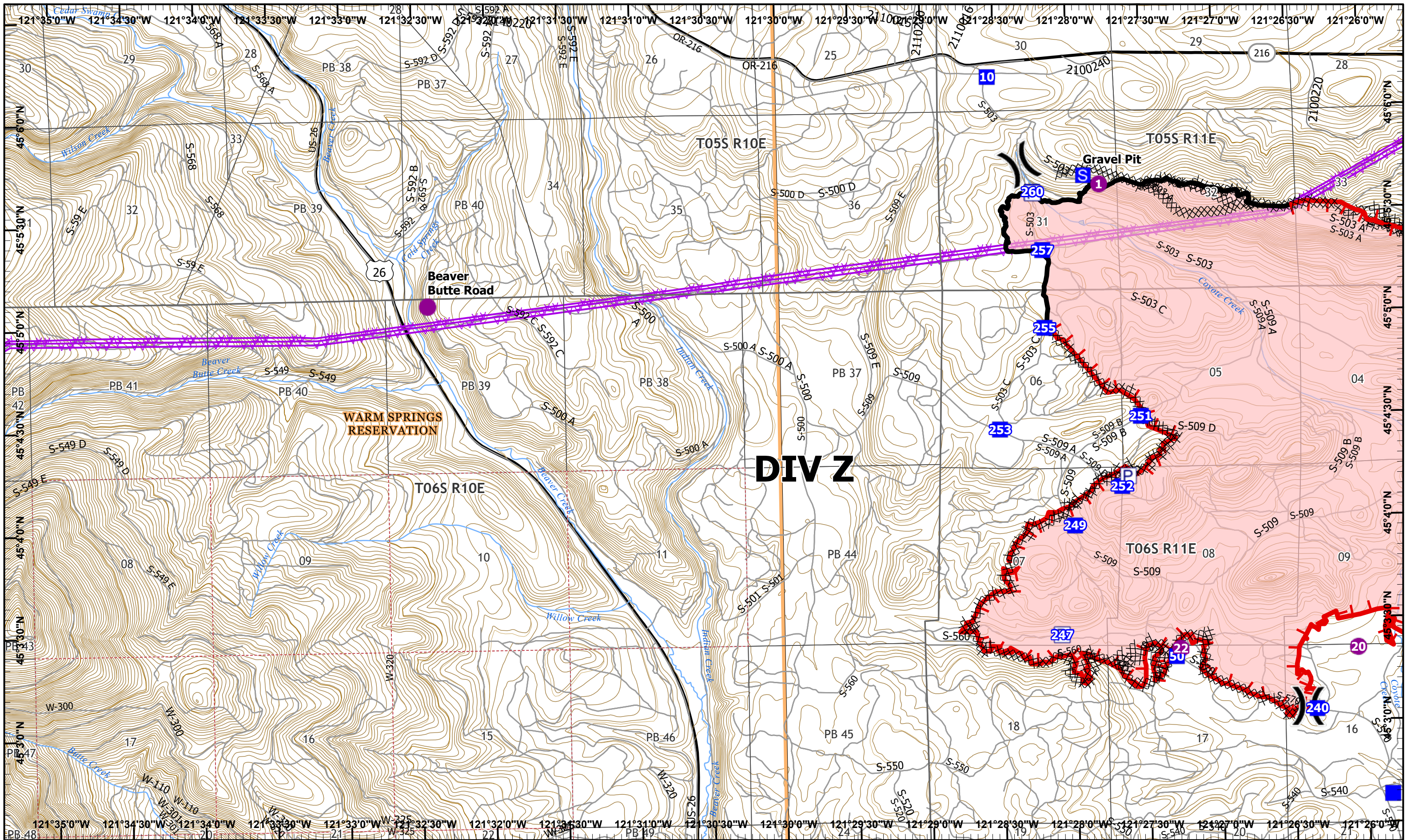


- | | | | |
|------------------|------------------------|-------------------------------------|---------------|
| ● Helispot | ◆ Internet Access | ▬ Fire Edge | ▬ Highways |
| ⌋ Division Break | ⬢ Repeater | ▬ Contained Line | ▬ FS Roads |
| ■ Drop Point | ⌘ Completed Dozer Line | ▬ Electric Power Transmission Lines | ▬ Other Roads |
| ⊙ Fire Station | H Completed Hand Line | ▬ Roads Warm Springs | ▬ County Road |



- Helispot
-) Division Break
- Drop Point
- Completed Dozer Line
- Completed Hand Line
- Fire Edge
- Contained Line
- Electric Power Transmission Lines
- Roads Warm Springs
- Highways
- FS Roads
- Other Roads





- Helispot
- S Staging Area
- Fire Edge
- Roads Warm Springs
- Other Roads
-) Division Break
- X Completed Dozer Line
- Contained Line
- Highways
- Drop Point
- H Completed Hand Line
- Electric Power Transmission Lines
- FS Roads

