
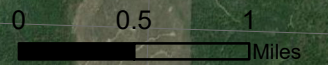
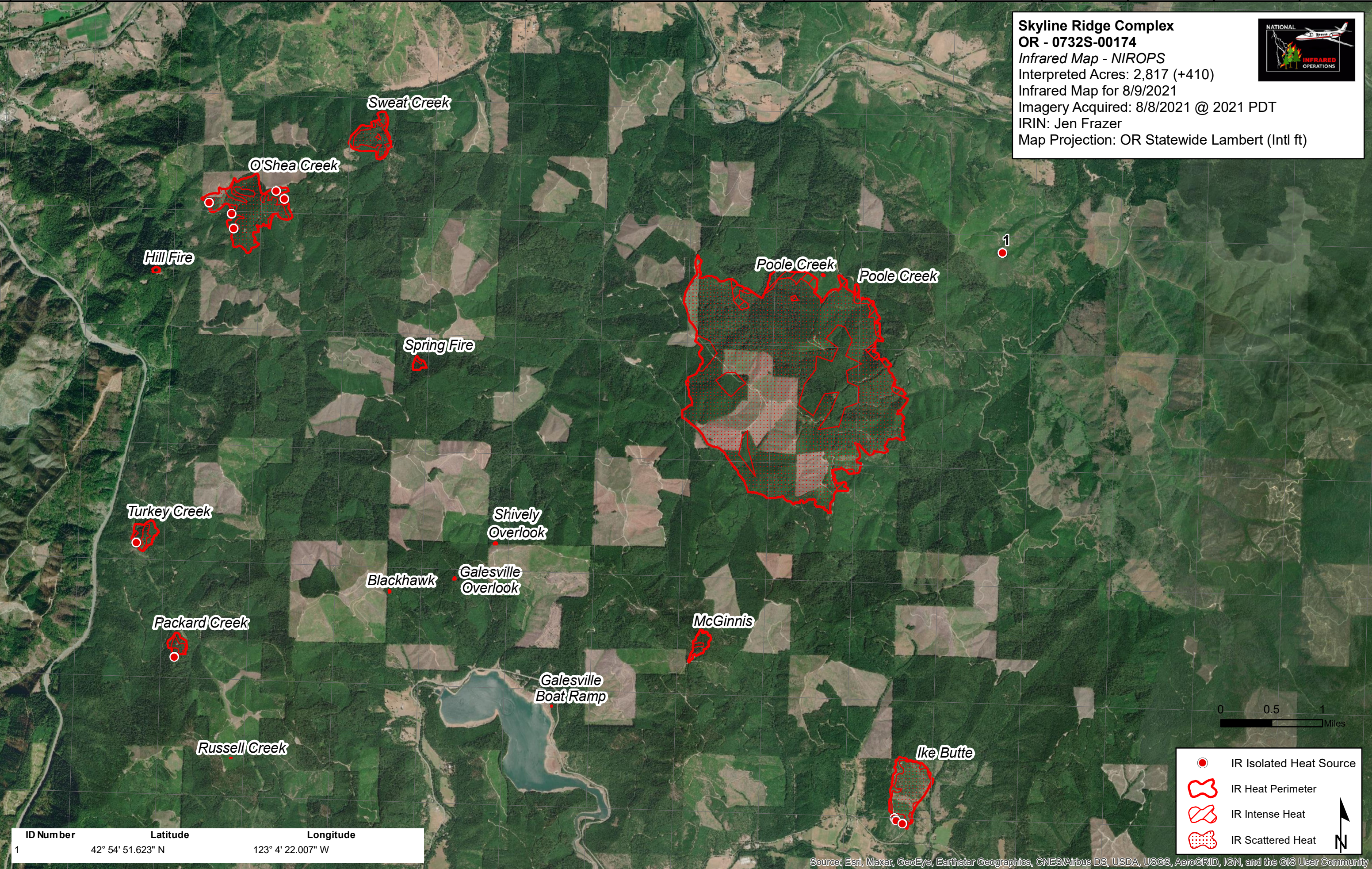






123°16'0"W 123°15'0"W 123°14'0"W 123°13'0"W 123°12'0"W 123°11'0"W 123°10'0"W 123°9'0"W 123°8'0"W 123°7'0"W 123°6'0"W 123°5'0"W 123°4'0"W 123°3'0"W 123°2'0"W 123°1'0"W


42°56'0"N
42°55'0"N
42°54'0"N
42°53'0"N
42°52'0"N
42°51'0"N
42°50'0"N

42°57'0"N
42°56'0"N
42°55'0"N
42°54'0"N
42°53'0"N
42°52'0"N
42°51'0"N
42°50'0"N

Skyline Ridge Complex
OR - 0732S-00174
Infrared Map - NIROPS
 Interpreted Acres: 2,817 (+410)
 Infrared Map for 8/9/2021
 Imagery Acquired: 8/8/2021 @ 2021 PDT
 IRIN: Jen Frazer
 Map Projection: OR Statewide Lambert (Intl ft)

-  IR Isolated Heat Source
-  IR Heat Perimeter
-  IR Intense Heat
-  IR Scattered Heat



ID Number	Latitude	Longitude
1	42° 54' 51.623" N	123° 4' 22.007" W

Source: Esri, Maxar, GeoEye, Earthstar Geographics, CNES/Airbus DS, USDA, USGS, AeroGRID, IGN, and the GIS User Community

123°15'0"W 123°14'0"W 123°13'0"W 123°12'0"W 123°11'0"W 123°10'0"W 123°9'0"W 123°8'0"W 123°7'0"W 123°6'0"W 123°5'0"W 123°4'0"W 123°3'0"W 123°2'0"W 123°1'0"W