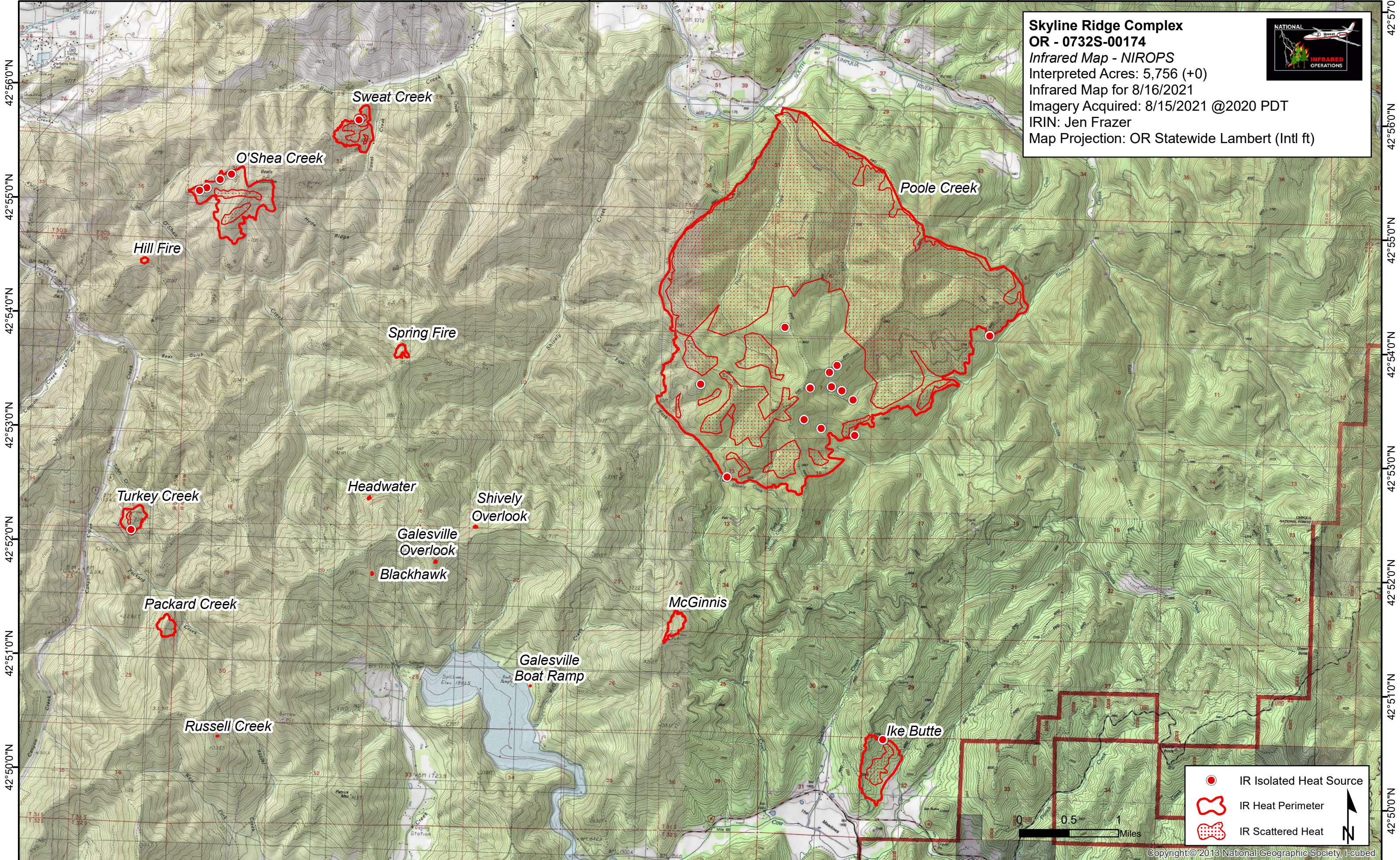


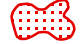
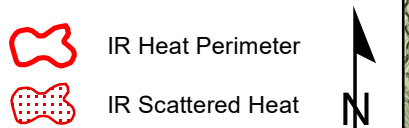
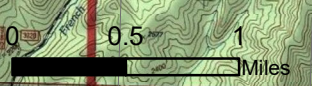


123°15'0"W 123°14'0"W 123°13'0"W 123°12'0"W 123°11'0"W 123°10'0"W 123°9'0"W 123°8'0"W 123°7'0"W 123°6'0"W 123°5'0"W 123°4'0"W 123°3'0"W 123°2'0"W 123°1'0"W 123°0'0"W



Skyline Ridge Complex
OR - 0732S-00174
Infrared Map - NIROPS
Interpreted Acres: 5,756 (+0)
Infrared Map for 8/16/2021
Imagery Acquired: 8/15/2021 @2020 PDT
IRIN: Jen Frazer
Map Projection: OR Statewide Lambert (Intl ft)

-  IR Isolated Heat Source
-  IR Heat Perimeter
-  IR Scattered Heat



123°15'0"W 123°14'0"W 123°13'0"W 123°12'0"W 123°11'0"W 123°10'0"W 123°9'0"W 123°8'0"W 123°7'0"W 123°6'0"W 123°5'0"W 123°4'0"W 123°3'0"W 123°2'0"W 123°1'0"W 123°0'0"W

42°56'0"N
42°55'0"N
42°54'0"N
42°53'0"N
42°52'0"N
42°51'0"N
42°50'0"N

42°56'0"N
42°55'0"N
42°54'0"N
42°53'0"N
42°52'0"N
42°51'0"N
42°50'0"N