

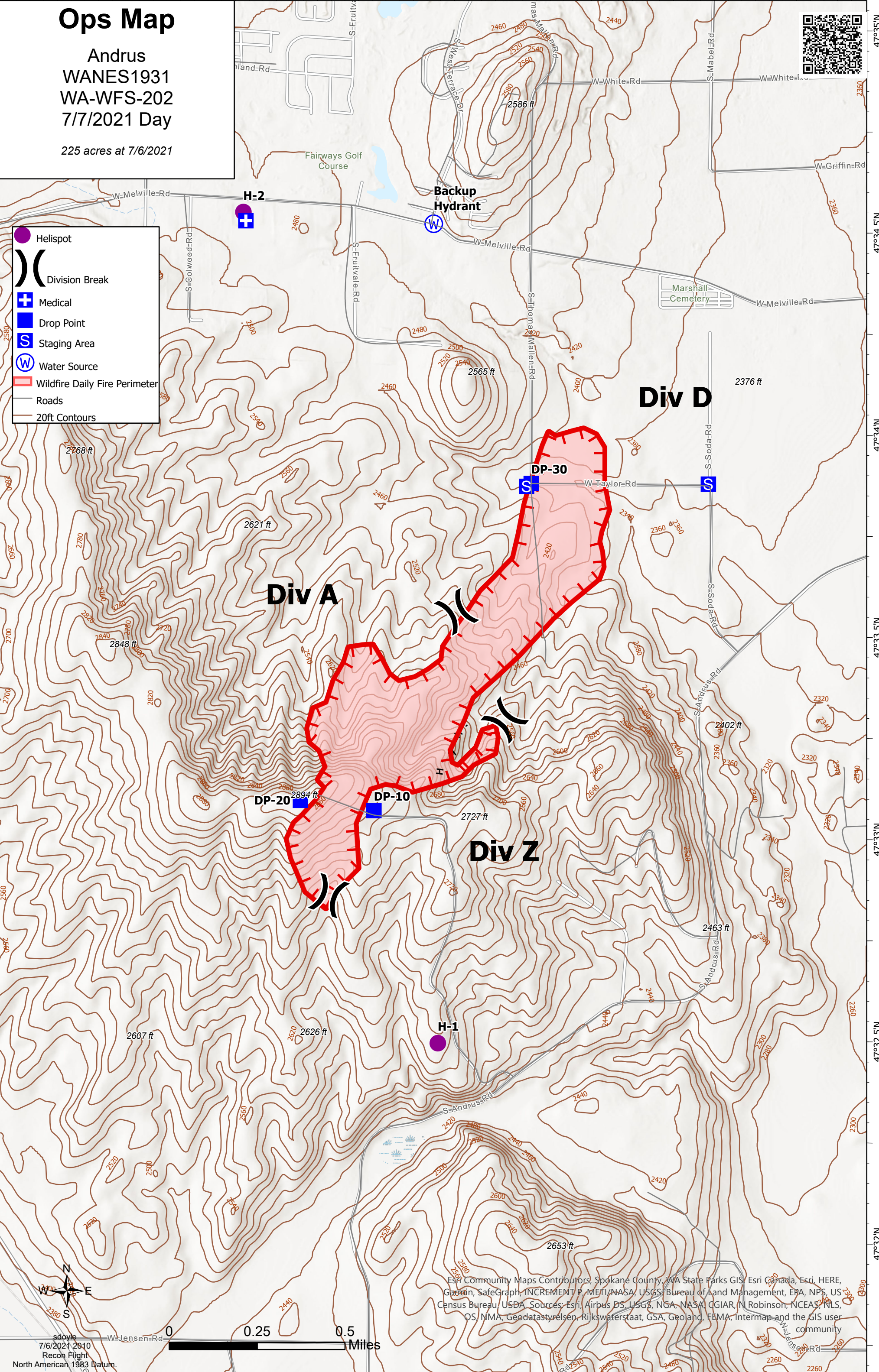
Ops Map

Andrus
WANES1931
WA-WFS-202
7/7/2021 Day

225 acres at 7/6/2021



- Helispot
- Division Break
- Medical
- Drop Point
- Staging Area
- Water Source
- Wildfire Daily Fire Perimeter
- Roads
- 20ft Contours



Esri Community Maps Contributors, Spokane County, WA State Parks GIS, Esri Canada, Esri, HERE, Garmin, SafeGraph, INCREMENT P, METI/NASA, USGS, Bureau of Land Management, EPA, NPS, US Census Bureau, USDA, Sources: Esri, Airbus DS, USGS, NGA, NASA, CGIAR, IN Robinson, NCEAS, NLS, OS, NMA, Geodatastyrelsen, Rijkswaterstaat, GSA, Geoland, FEMA, Intermap and the GIS user community

sdoyle
7/6/2021 2010
Recon Flight
North American 1983 Datum

