

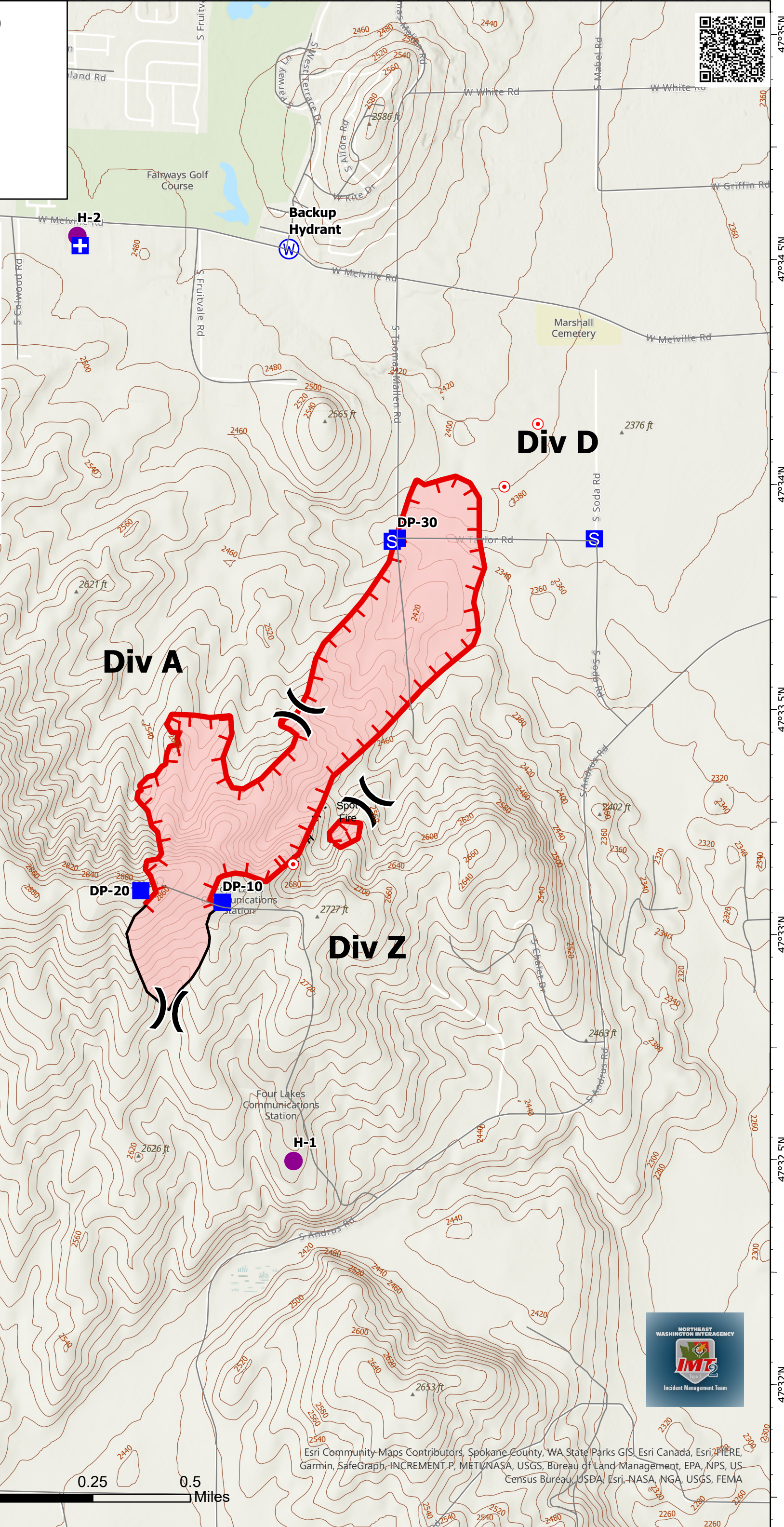
# Ops Map

Andrus  
WANES1931  
WA-WFS-202  
7/8/2021 Day

232 acres at 7/7/2021



- Helispot
- ⎓ Division Break
- ⊕ Medical
- Drop Point
- Ⓢ Staging Area
- Hot Spot - Spot Fire
- Ⓜ Water Source
- H Completed Hand Line
- ▬ Fire Edge
- ▬ Contained Line
- ▬ Roads
- ▬ 20ft Contours
- ▭ Wildfire Daily Fire Perimeter



**Div D**

**Div A**

**Div Z**

Marshall Cemetery

Four Lakes Communications Station

Backup Hydrant

DP-20

DP-10

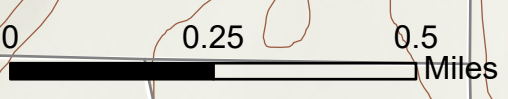
DP-30

H-2

H-1



Esri Community Maps Contributors, Spokane County, WA State Parks GIS, Esri Canada, Esri, HERE, Garmin, SafeGraph, INCREMENT.P, METI/NASA, USGS, Bureau of Land Management, EPA, NPS, US Census Bureau, USDA, Esri, NASA, NGA, USGS, FEMA



SLD  
7/7/2021 1746  
GPS and Recon Flight  
North American 1983 Datum