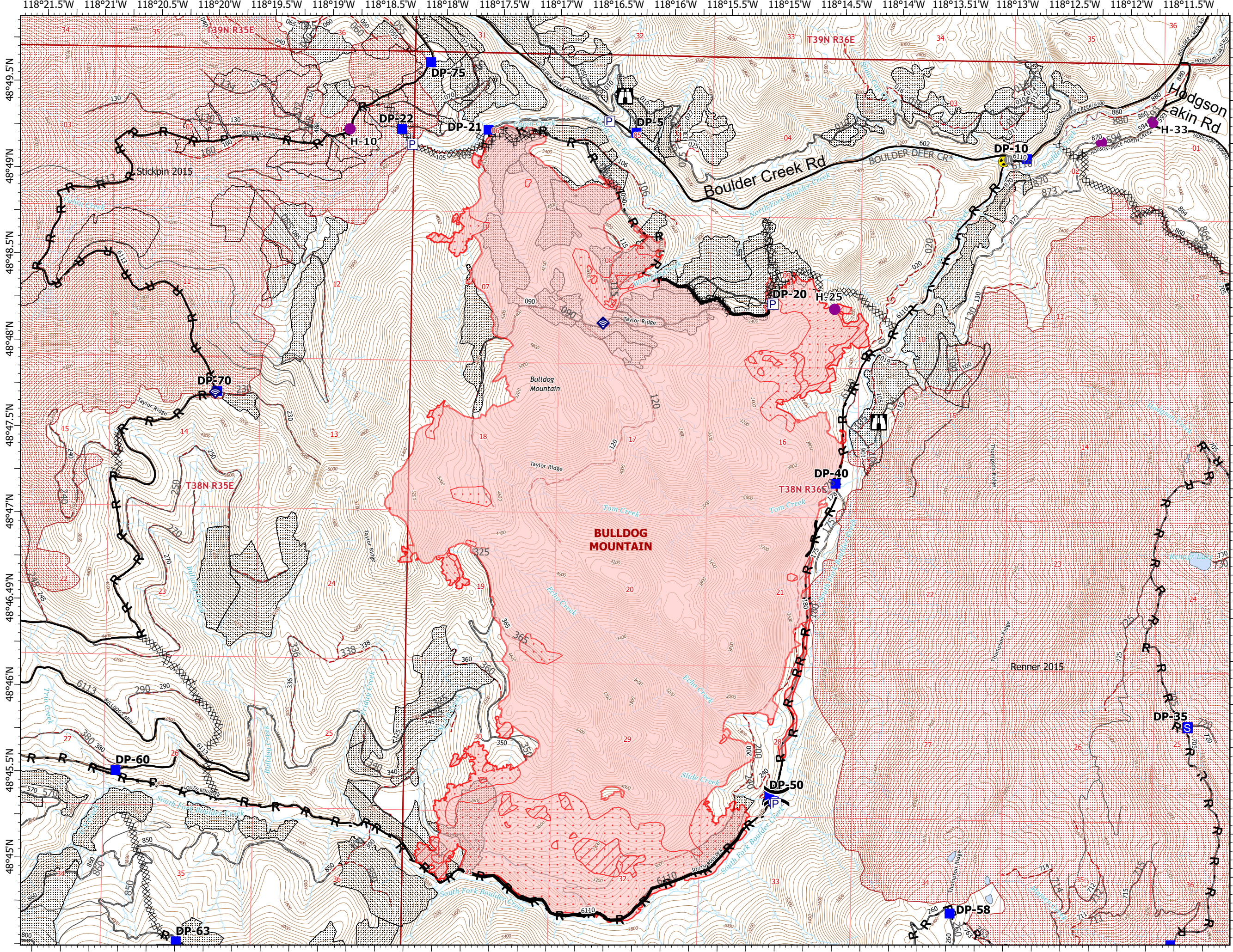


# IAP Map

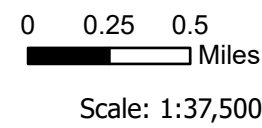
Bulldog Mountain  
WACOF-2348  
9/06/2021 Day

6,206 acres at 09/06/2021



- Helispot
- ( ) Division Break
- Drop Point
- Ⓢ Staging Area
- 🏠 Lookout
- ⚖ Bridge
- 📶 Internet Access
- ☠ Hazard
- 🌊 Water Source
- ⊗ Completed Dozer Line
- Ⓜ Completed Hand Line
- Ⓜ Completed Road as Line
- Contained Line
- 🔴 Wildfire Daily Fire Perimeter
- 🔴 IR Intense Heat
- 🔴 IR Scattered Heat
- 🔴 Burn Scars
- 🔴 Timber Sales
- 🌿 Roadless Areas

- ### Roads
- Oper\_Maint\_Level
- 1 - BASIC CUSTODIAL CARE (CLOSED)
  - 2 - HIGH CLEARANCE VEHICLES
  - 3 - SUITABLE FOR PASSENGER CARS
  - 4 - MODERATE DEGREE OF USER COMFORT
  - 5 - HIGH DEGREE OF USER COMFORT
  - <Null>
  - NA - NOT APPLICABLE
  - <all other values>



WSZ  
9/6/2021 1657  
Acres from IR and GPS  
North American 1983 Datum, LatLong Grid