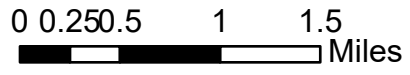


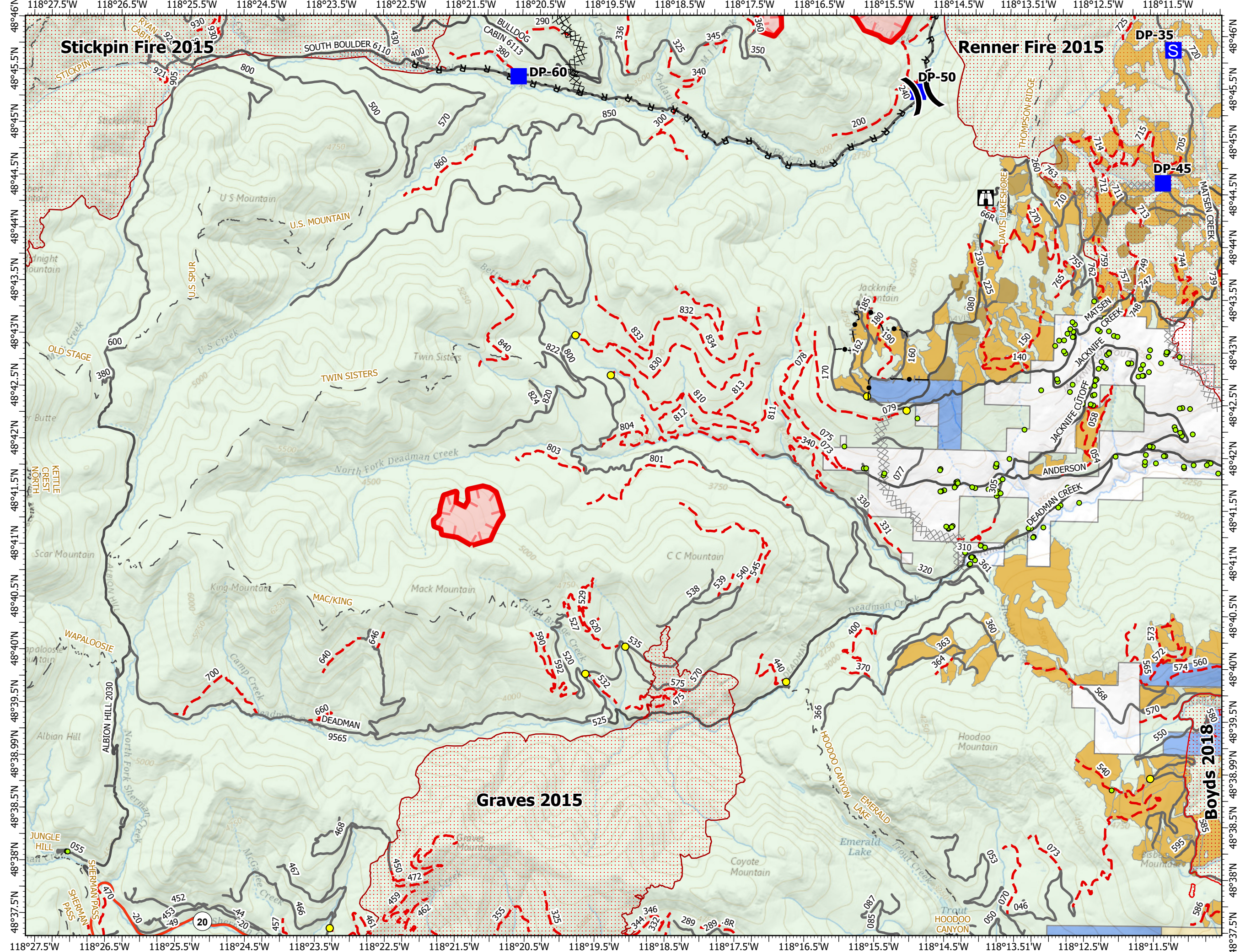
**Ops Map**  
 Mack Mtn  
 WA-COF-2338  
 8/16/2021  
 Appx 180 ac at  
 8/15/2021



- Structures
- GATE
- | Division Break
- Drop Point
- Staging Area
- Lookout
- Label Point
- Completed Dozer Line
- Completed Fuel Break
- Completed Hand Line
- Completed Road as Line
- Planned Dozer Line
- Planned Hand Line
- Fire Edge
- State Highway
- Trails
- Roads
- CLOSED
- HIGH CLEARANCE VEHICLES
- OPEN
- Wildfire Daily Fire Perimeter
- Stickpin Burn Scar 2015
- Renner Burn Scar 2015
- Kettle Jack Handline
- Kettle Face Harvest Units
- Kettle Face PCT
- Bureau of Land Management
- U.S. Forest Service
- State
- Private/Unknown
- 2018\_Fires\_BP\_Copy
- 20150904\_1959\_GravesMountain\_HeatPerimeter



WSZ  
 8/15/2021 1725  
 Acres from IR  
 North American 1983 Datum.



**Boyd's 2018**