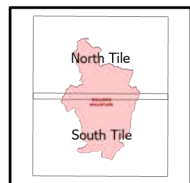


# IAP Map

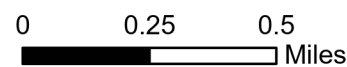
Bulldog Mountain  
WACOF-2348  
8/21/2021 Day

5,087 acres at 08/20/2021@0700



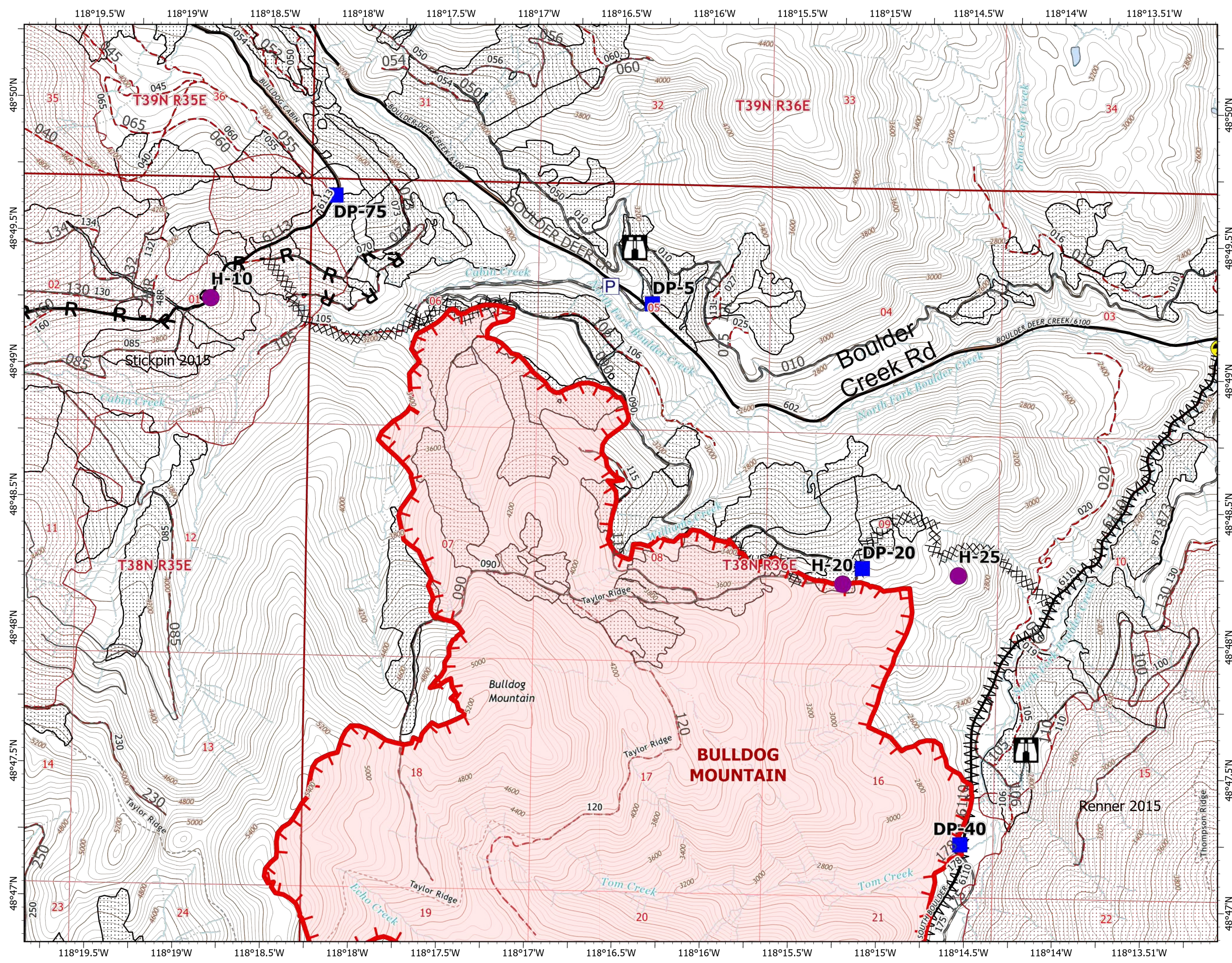
North Tile

- Helispot
  - Drop Point
  - 🏠 Lookout
  - ⚠ Hazard
  - ⌘ Completed Dozer Line
  - ⌘ Completed Fuel Break
  - ⌘ Completed Road as Line
  - ▬ Fire Edge
  - ▭ Wildfire Daily Fire Perimeter
  - ▭ Burn Scars
  - ▭ Timber Sales
  - - - FS Closed Roads
  - Roads
- Roads**
- Oper\_Maint\_Level**
- ⋯ 1 - BASIC CUSTODIAL CARE (CLOSED)
  - 2 - HIGH CLEARANCE VEHICLES
  - 3 - SUITABLE FOR PASSENGER CARS
  - 4 - MODERATE DEGREE OF USER COMFORT
  - 5 - HIGH DEGREE OF USER COMFORT
  - <Null>
  - NA - NOT APPLICABLE
  - <all other values>
  - ▭ Roadless Areas



Scale: 1:24,000

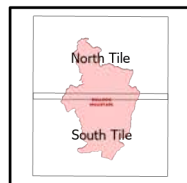
8/20/2021 2009  
Acres from IR and GPS  
North American 1983 Datum, LatLong Grid



# IAP Map

Bulldog Mountain  
WACOF-2348  
8/21/2021 Day

5,087 acres at 08/20/2021@0700



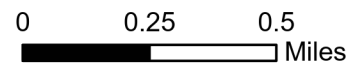
South Tile

- (X) Division Break
- Drop Point
- (W) Water Source
- ^ Completed Fuel Break
- Completed Road as Line
- ▬ Fire Edge
- ▭ Wildfire Daily Fire Perimeter
- ▭ Timber Sales
- - - FS Closed Roads
- Roads

## Roads

### Oper\_Maint\_Level

- 1 - BASIC CUSTODIAL CARE (CLOSED)
- 2 - HIGH CLEARANCE VEHICLES
- 3 - SUITABLE FOR PASSENGER CARS
- 4 - MODERATE DEGREE OF USER COMFORT
- 5 - HIGH DEGREE OF USER COMFORT
- <Null>
- NA - NOT APPLICABLE
- <all other values>
- ▭ Roadless Areas



Scale: 1:24,000

8/20/2021 2009  
Acres from IR and GPS  
North American 1983 Datum, LatLong Grid

