

OPS IR MAP

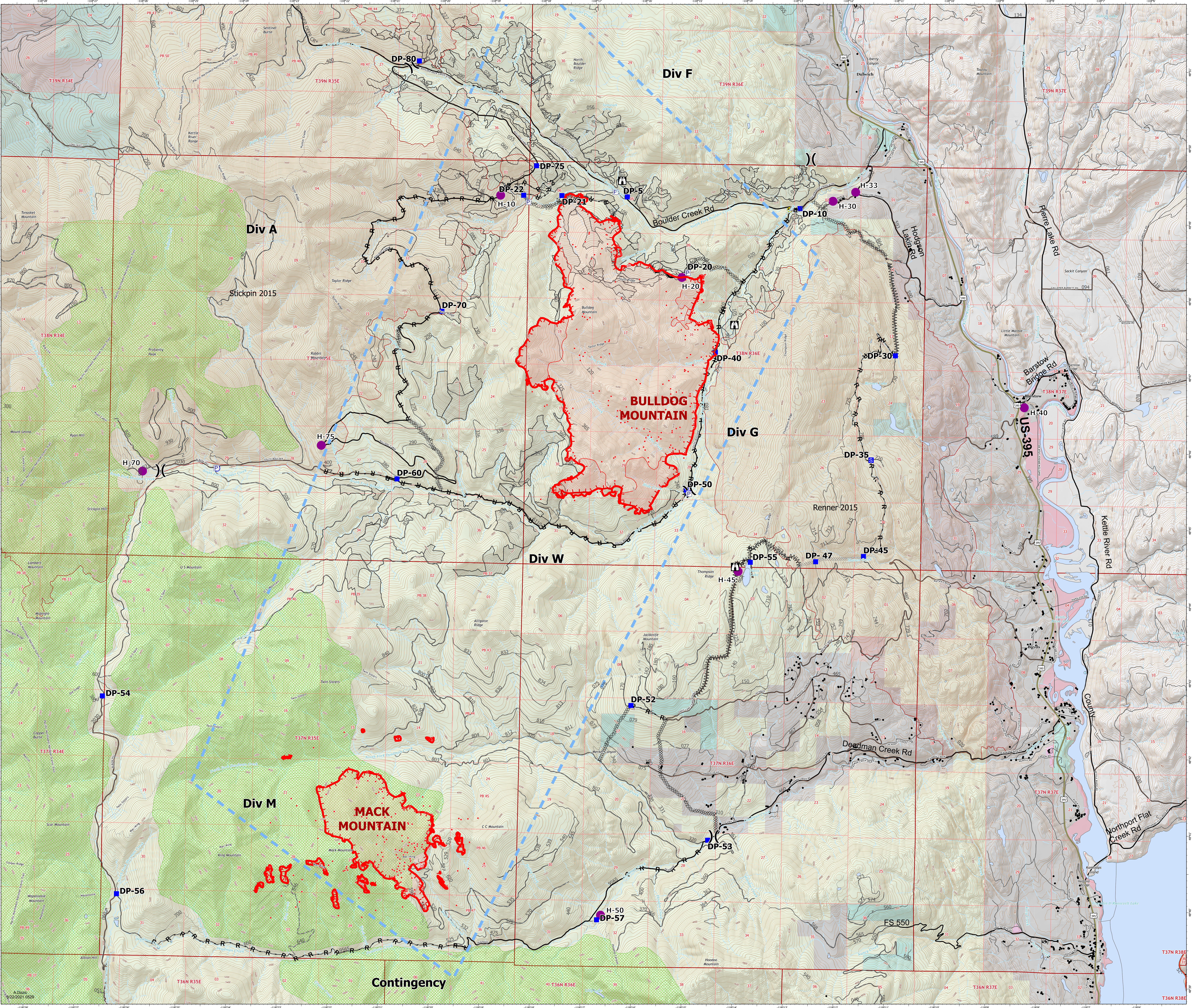
Bulldog Mountain
WACOF-2348

5,173 ac ac at 08/21/2021@2109

Mack Mountain
WACOF-2338

1,337 ac at 08/21/2021 @2103

08/22/2021



- Scattered Heat
- Intense Heat
- Heat Perimeter
- Isolated Heat Sources
- Structures
- Helispot
- Division Break
- Drop Point
- Staging Area
- Lookout
- Bridge
- Hazard
- Water Source
- Completed Dozer Line
- Completed Fuel Line
- Completed Hand Line
- Completed Road as Line
- Planned Dozer Line
- Planned Hand Line
- Temporary Flight Restriction
- Fire Edge
- Contained Line
- Interstate or US Highway
- State Highway or Major Arterial Collector
- Arterial or Collector
- Local Road or City Street
- Freeway Ramp
- Unknown
- <all other values>
- Expressway
- Secondary Hwy
- Local Connector
- Local Road
- Ramp
- 4WD
- Ferry
- Tunnel
- Private
- Ferry County
- Indian Allotment Trust Lands
- Open water and lakes
- US Bureau of Reclamation
- US Dept. of Interior
- US Forest Service
- United States of America
- WA DNR
- WA DOT
- WA State
- Renner Burn Scar 2015
- Stickpin Burn Scar 2015
- Timber Sales
- Roads
- Oper. Maint. Level
- 1 - BASIC CUSTODIAL CARE (CLOSED)
- 2 - HIGH CLEARANCE VEHICLES
- 3 - SUITABLE FOR PASSENGER CARS
- 4 - MODERATE DEGREE OF USER COMFORT
- 5 - HIGH DEGREE OF USER COMFORT
- <Null>
- NA - NOT APPLICABLE
- Roadless Areas



0 1/4 1/2 3/4 1
Miles



1:27,285